

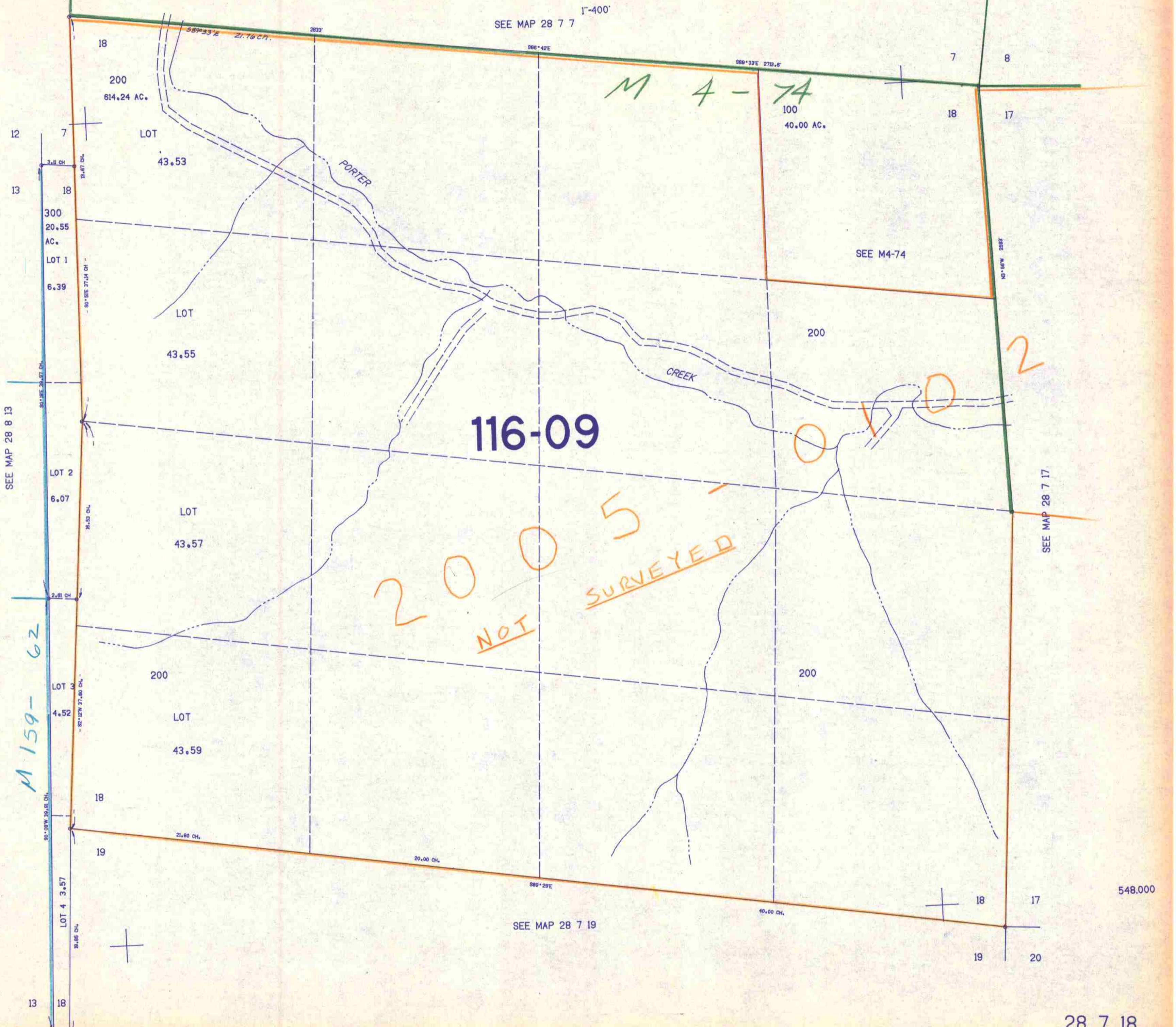
THIS MAP WAS PREPARED FOR ASSESSMENT PURPOSE ONLY.

SECTION 18 T.28S. R.7W. W.M.
SECTION 18 T.28S. R.7 1/2W. W.M.
DOUGLAS COUNTY

REVISED ON
12-21-05

28 7 18

1"=400'
SEE MAP 28 7 7



116-09

2005
NOT SURVEYED

M 4-74

M 159-62

2

0 1 0 2

548.000

28 7 18

1183.000

4/85
C.M.O.