

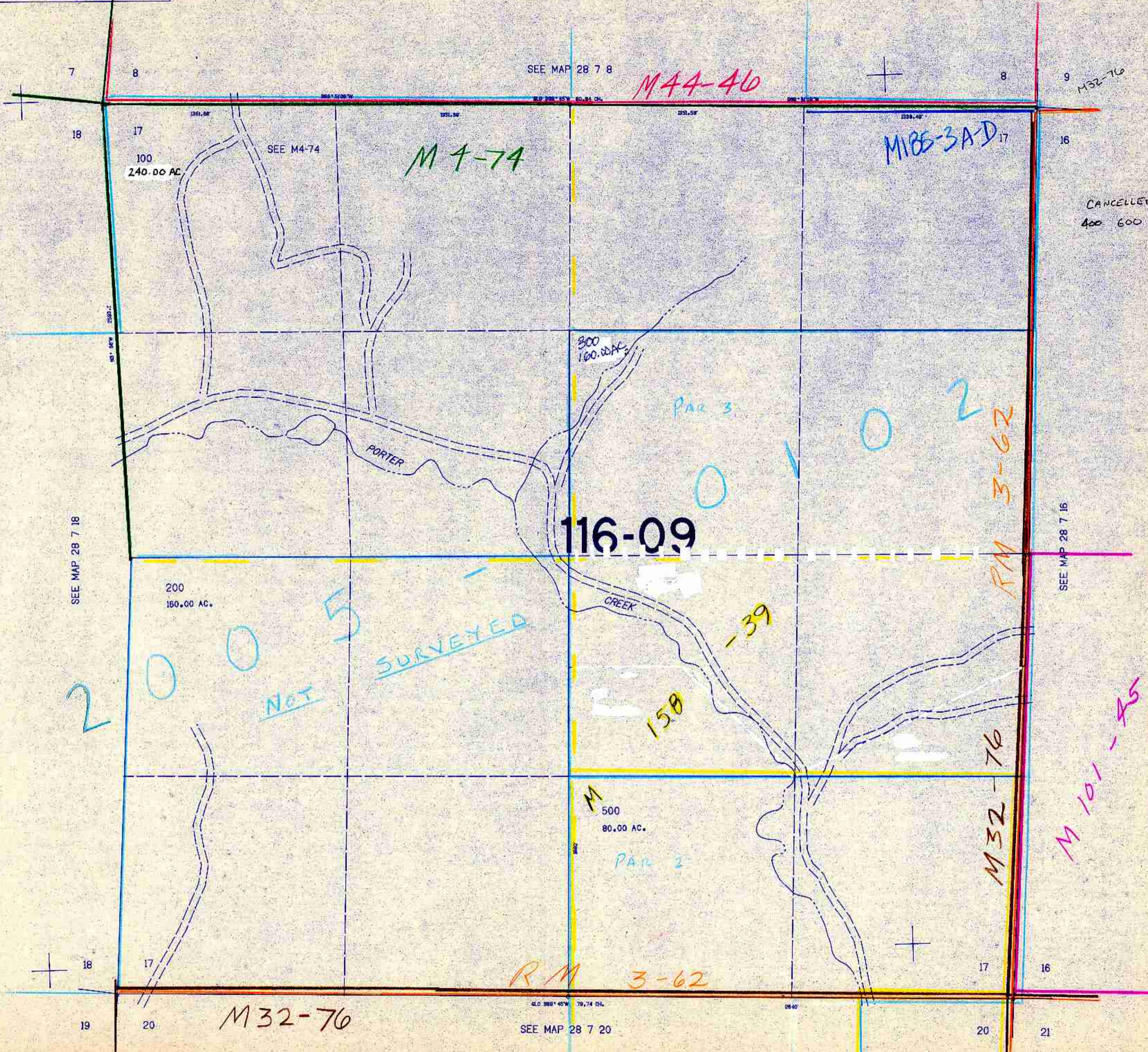
SECTION 17 T.28S. R.7W. W.M.  
DOUGLAS COUNTY

REVISED ON  
12-21-65

28 7 17

THIS MAP WAS PREPARED FOR  
ASSESSMENT PURPOSE ONLY.

1"=400'



CANCELLED NOS  
400 600 101

548.000

28 7 17

1188.000

Alps  
CMA