

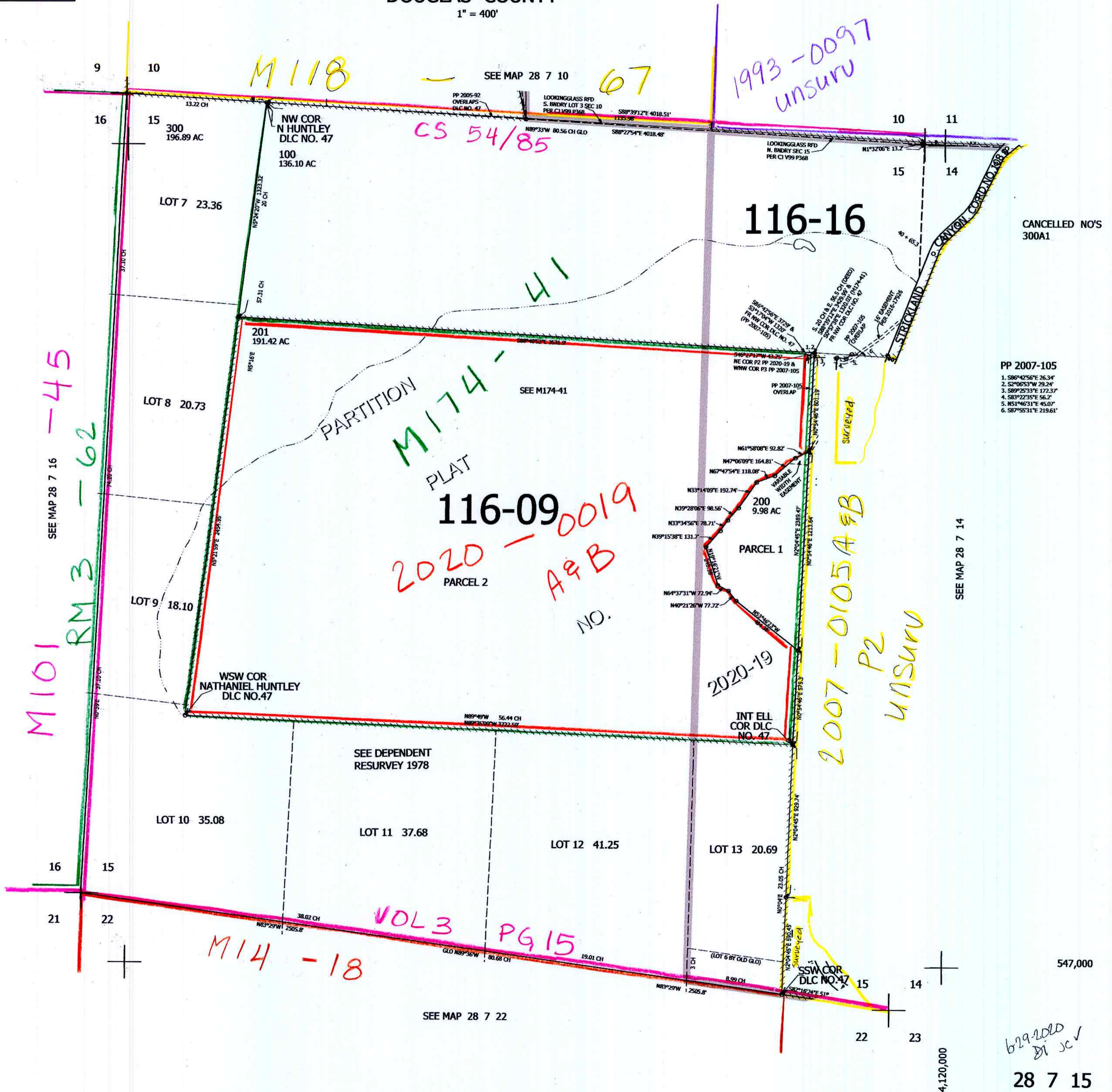
THIS MAP WAS PREPARED FOR ASSESSMENT PURPOSE ONLY.

SEC.15 T.28S. R.7W. W.M. DOUGLAS COUNTY

REVISED ON 6-10-20

28 7 15

1" = 400'



CANCELLED NO'S 300A1

PP 2007-105

1. S86°42'56"E 26.34'
2. S2°06'53"W 29.24'
3. S89°25'33"E 172.37'
4. S83°22'35"E 56.2'
5. N51°46'31"E 45.07'
6. S87°55'31"E 219.61'

547,000

629-200 Di SCV

28 7 15

4,120,000