

SECTION 7 T.28S. R.7W. W.M.
SECTION 7 T.28S. R.7 1/2W. W.M.
DOUGLAS COUNTY

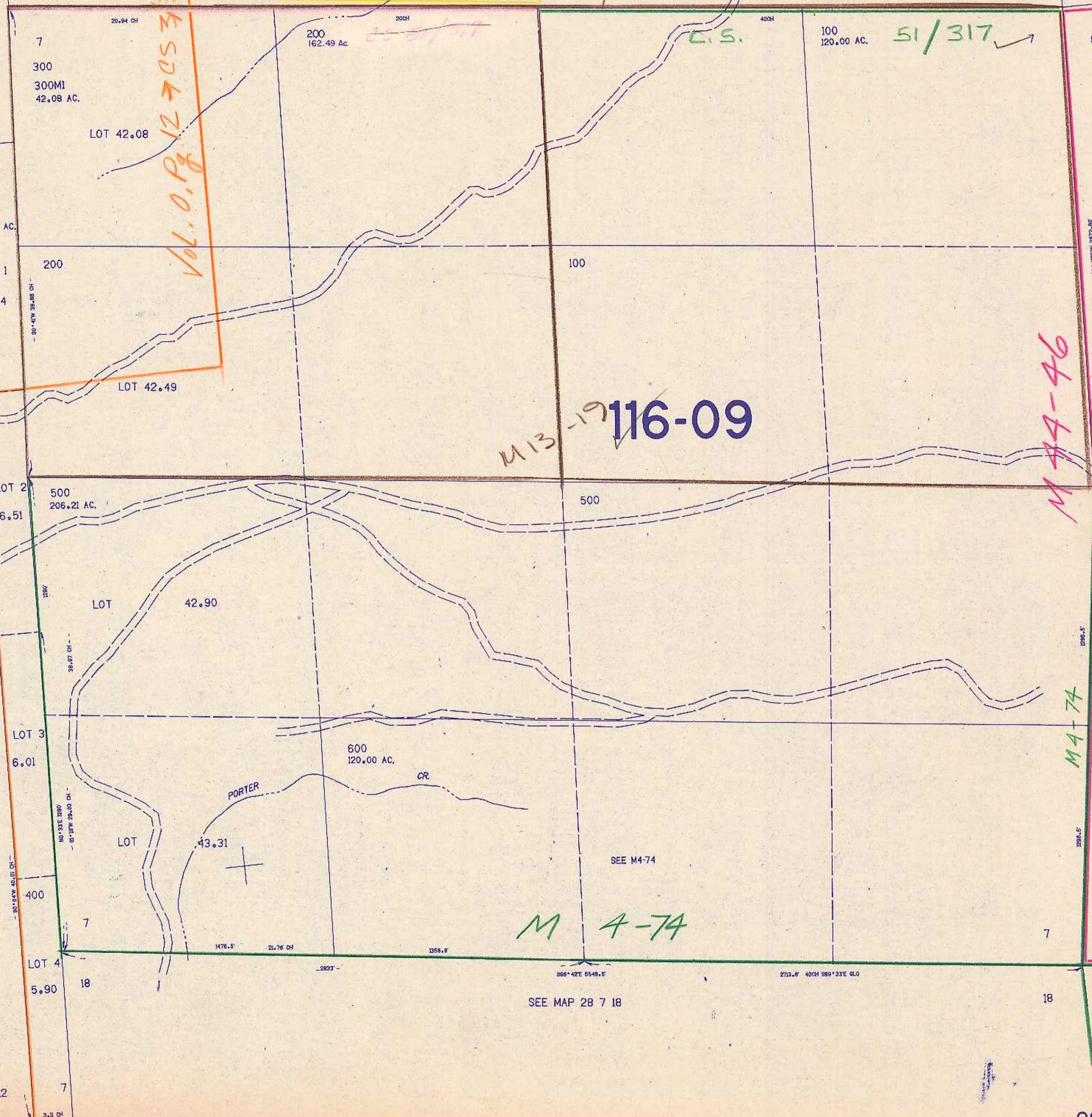
28 7 7

THIS MAP WAS PREPARED FOR
ASSESSMENT PURPOSE ONLY.

1"=400'

SEE MAP 28 7 6

SEE C951-317



SEE MAP 28 8 12

M124-30

C951/84-5

Vol. 0, Pg. 12 → C951-37

M160-41

M13-19

M13-19
116-09

M44-46

M4-74

M 4-74

SEE MAP 28 7 18

SEE MAP 28 7 8

28 7 7

4185
CMA

CHECKED

TRACED

LAYOUT

CONTROL

1179.000