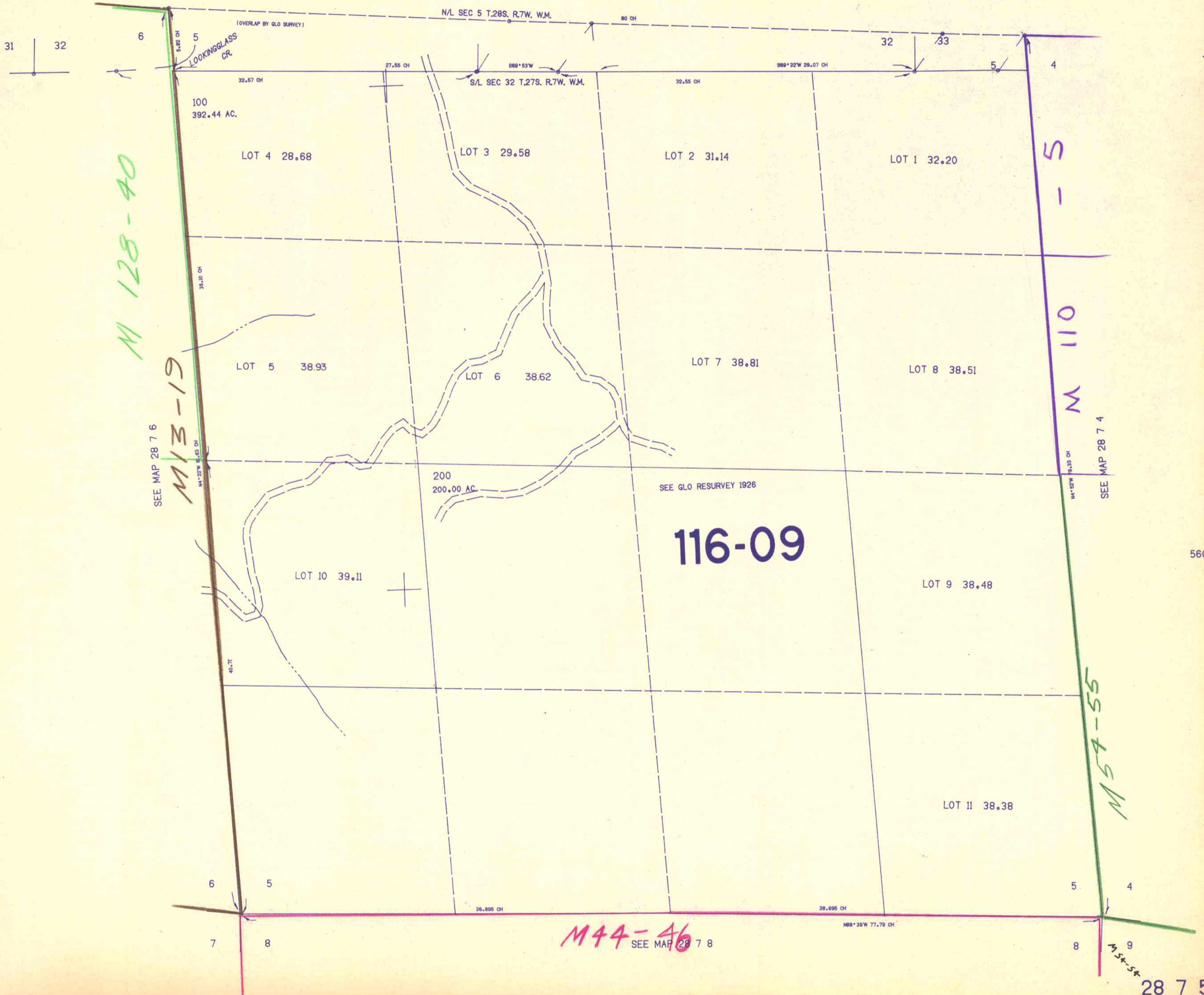


SECTION 5 T.28S. R.7W. W.M.
DOUGLAS COUNTY

1"=400'

THIS MAP WAS PREPARED FOR
ASSESSMENT PURPOSE ONLY.

SEE MAP 27 7 32



560,000

1,185,000

M 44-46
SEE MAP 27 7 8

4185
C.M.O.

CONTROL LAYOUT TRACK CHECKED