

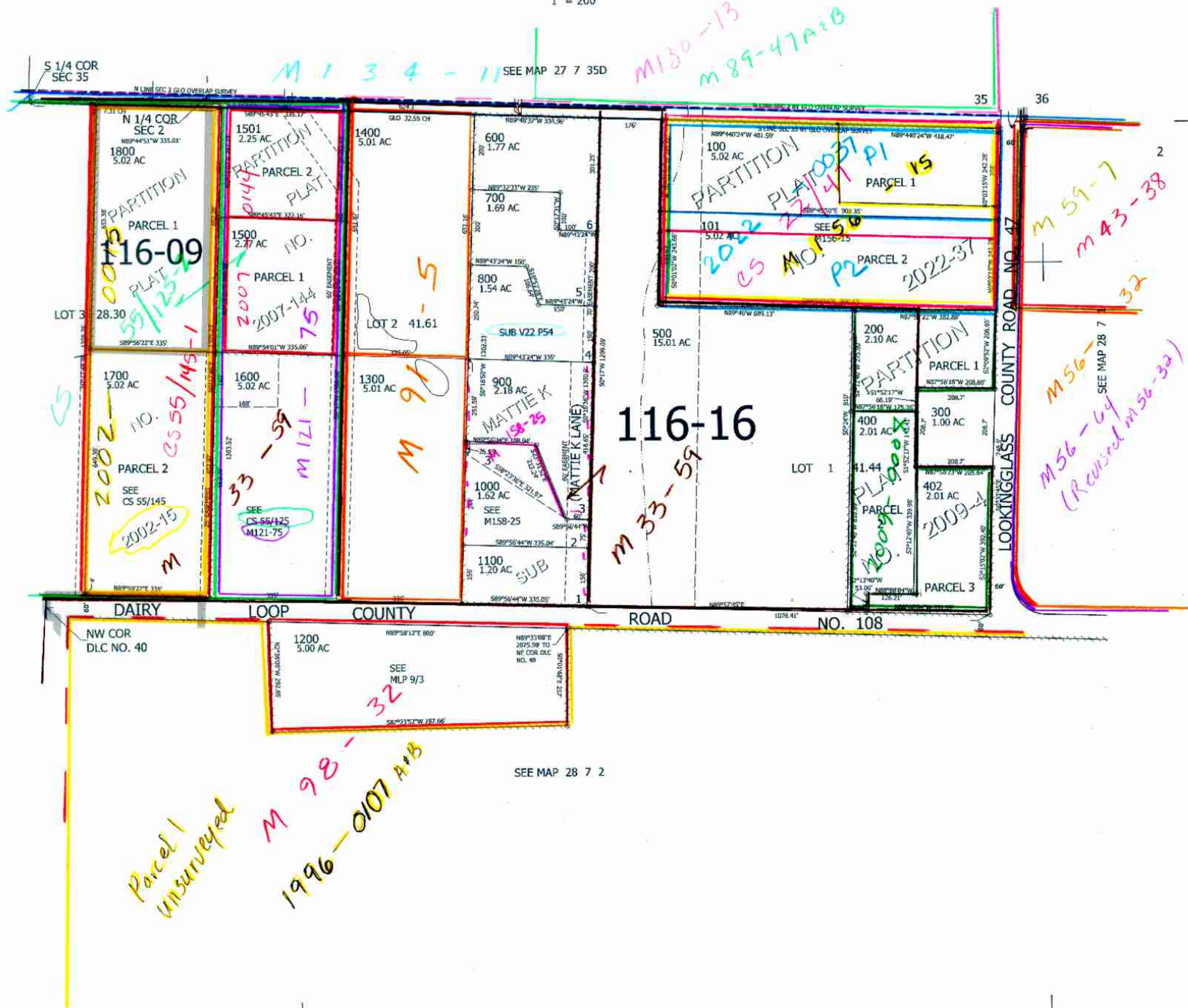
THIS MAP WAS PREPARED FOR ASSESSMENT PURPOSE ONLY.

NE1/4 SEC.2 T.28S. R.7W. W.M. DOUGLAS COUNTY

REVISED ON 8-25-22

28 7 2A

1" = 200'



CANCELED NO'S 901 401

SEE MAP 28 7 2

SEE MAP 28 7 2

Parcel 1 unsurveyed
M 98-32
1996-0107 A+B

ONE
12/05/07

28 7 2A JP

4,125,000

560,000

CEN SEC

1/4 COR