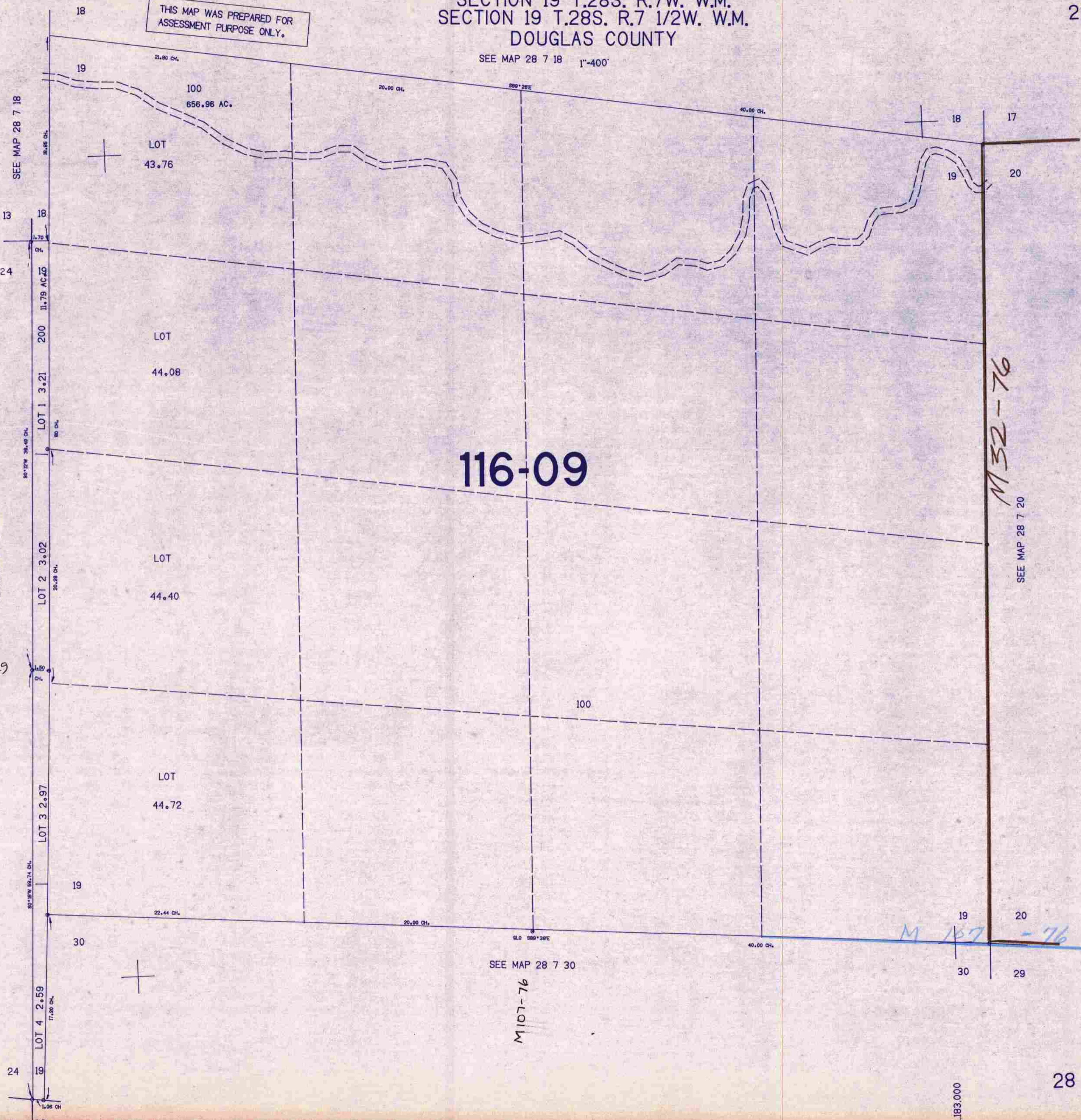


SECTION 19 T.28S. R.7W. W.M.  
SECTION 19 T.28S. R.7 1/2W. W.M.  
DOUGLAS COUNTY

28 7 19

THIS MAP WAS PREPARED FOR  
ASSESSMENT PURPOSE ONLY.

SEE MAP 28 7 18 1"=400'



116-09

M 32-76

M 107-76

M 157-76

1:183,000

28 7 19

4/105  
C/MO