

SECTION 7 T.28S. R.7W. W.M.  
SECTION 7 T.28S. R.7 1/2W. W.M.  
DOUGLAS COUNTY

28 7 7

THIS MAP WAS PREPARED FOR  
ASSESSMENT PURPOSE ONLY.

1"=400'

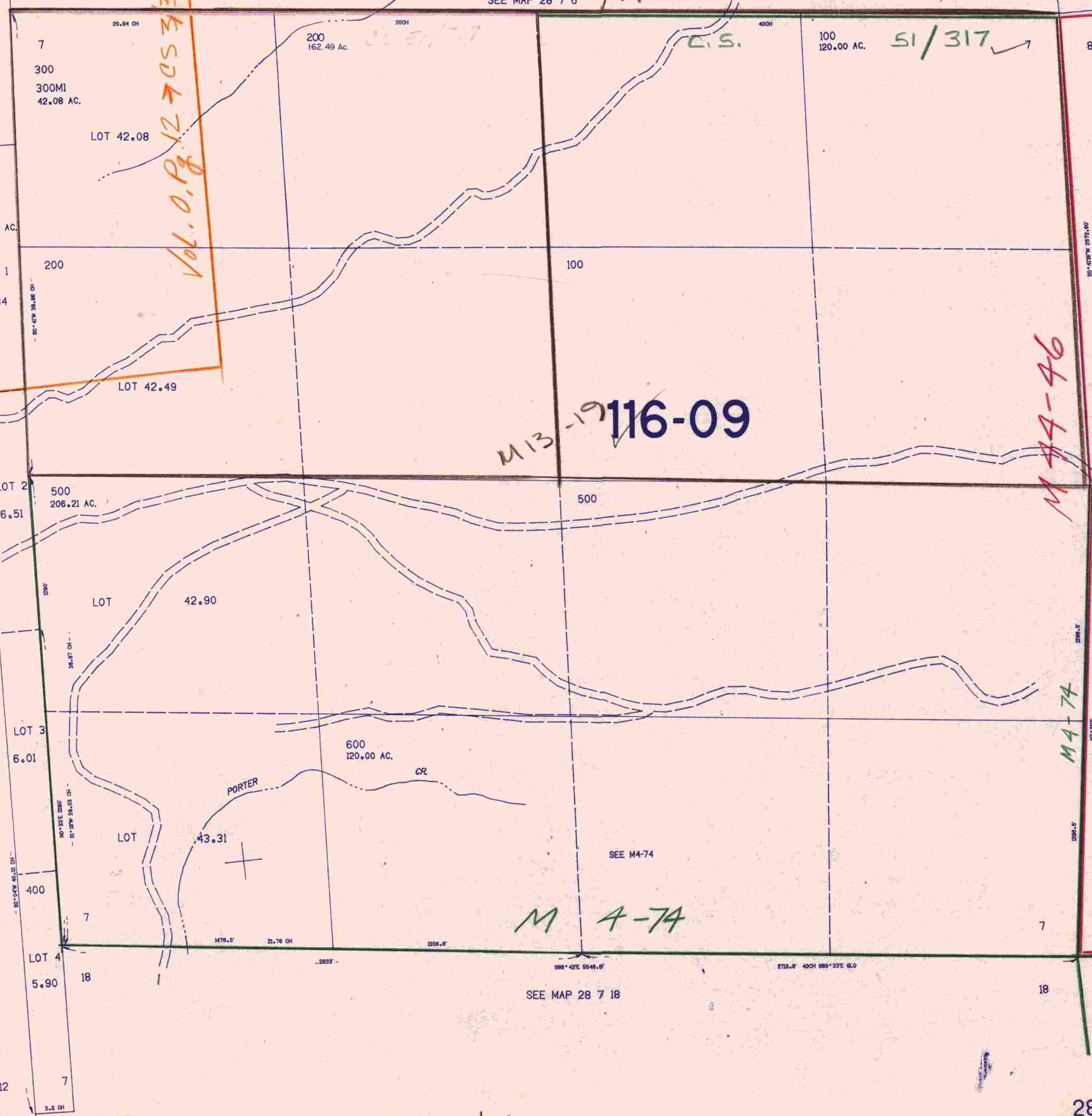
SEE MAP 28 7 6

SEE CS51-317

M13-19

SEE MAP 28 8 12  
M12-30

Vol. 0. Pg. 12 → CS 317



M13-19 116-09

M44-46

M4-74

M4-74

CONTROL — LAYOUT — TRACED

28 7 7

A185  
CNO