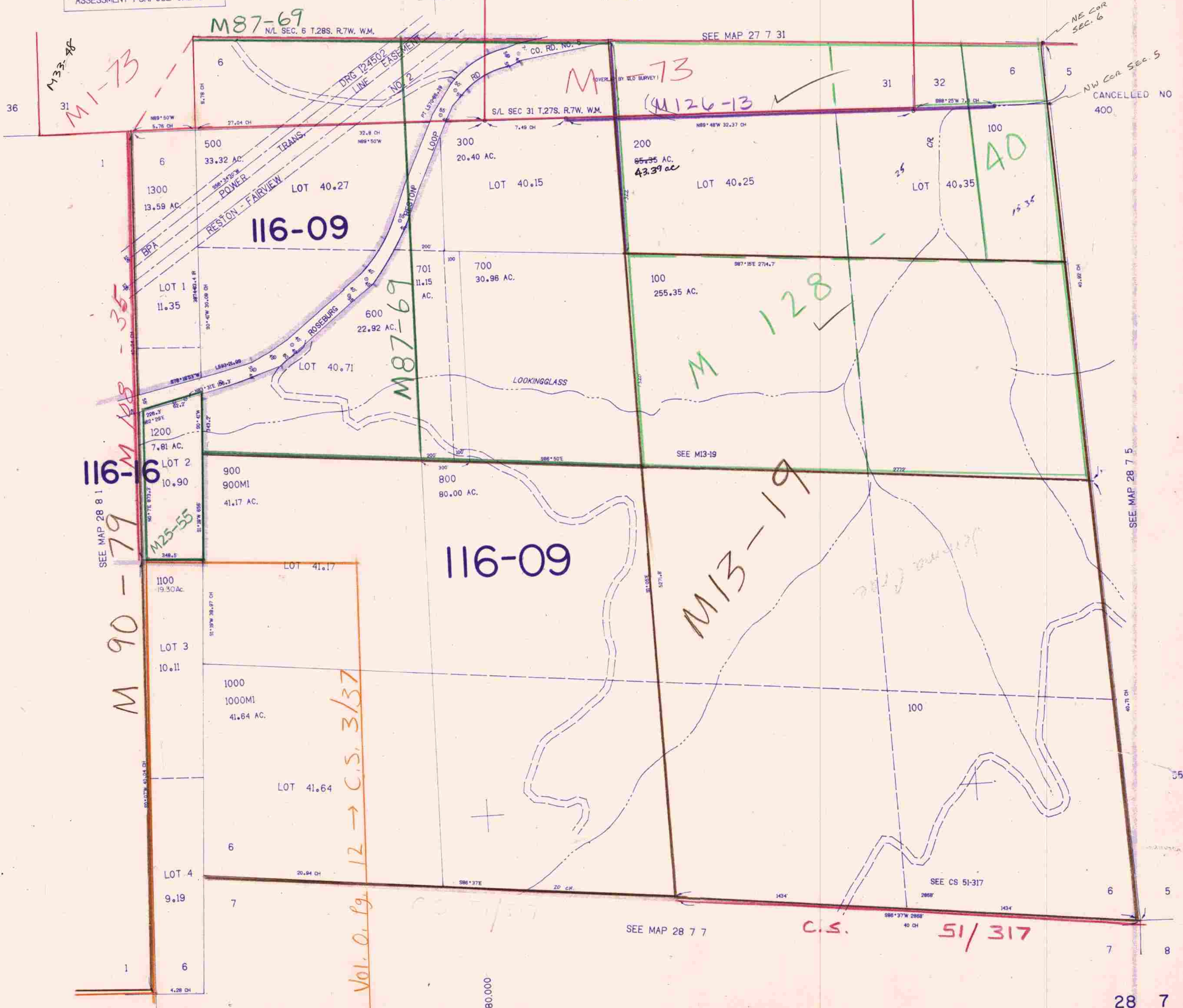


SECTION 6 T.28S. R. 7 W.W. M.
SECTION 6 T.28S. R.7 1/2 W.W.M.
DOUGLAS COUNTY

1" = 400'

28 7 6

THIS MAP WAS PREPARED FOR
ASSESSMENT PURPOSE ONLY.



M33-78
M1-13

M87-69
N/L SEC. 6 T.28S. R.7W. W.M.

M-73
M126-13
S/L SEC 31 T.27S. R.7W. W.M.

116-09

M87-69

M128

116-09

M13-19

116-16

M90-79

M25-55

Vol. O. Pg. 12 → C.S. 3/37

C.S. 51/317

28 7 6

7/88 H.D.