

SE 1/4 SEC. 36 T.28S. R.8W. W.M.
DOUGLAS COUNTY

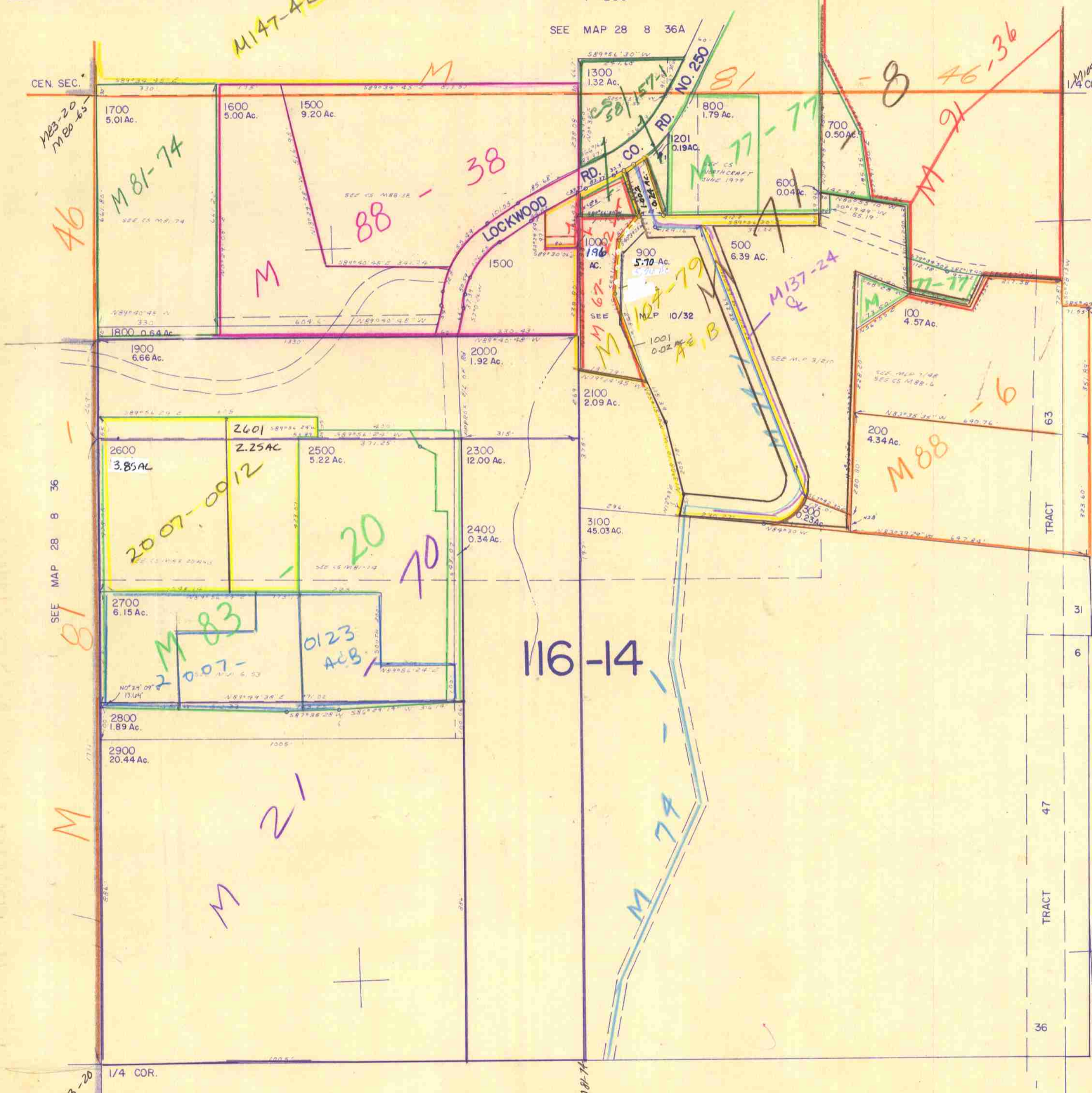
REVISED ON
11-19-91

28 8 36D

THIS MAP WAS PREPARED FOR
ASSESSMENT PURPOSE ONLY.

1" = 200'

SEE MAP 28 8 36A



CANCELLED NO'S.

400	1200
3000	1400
1100	2200
1101	
1199	901

PARCEL 1201

- 5 0° 38' 13" W - 221.49'
- N 89° 22' W - 11.95'
- N 18° 33' 08" W - 164.80'
- S 39° 52' A - 93.54'

N.W. COR.
W.M. McCULLOUGH
D.L.C. NO. 56

SEE MAP 28 7 31C

SEE MAP 29 7 6

532,000

116-14

28 8 36D

177,000