

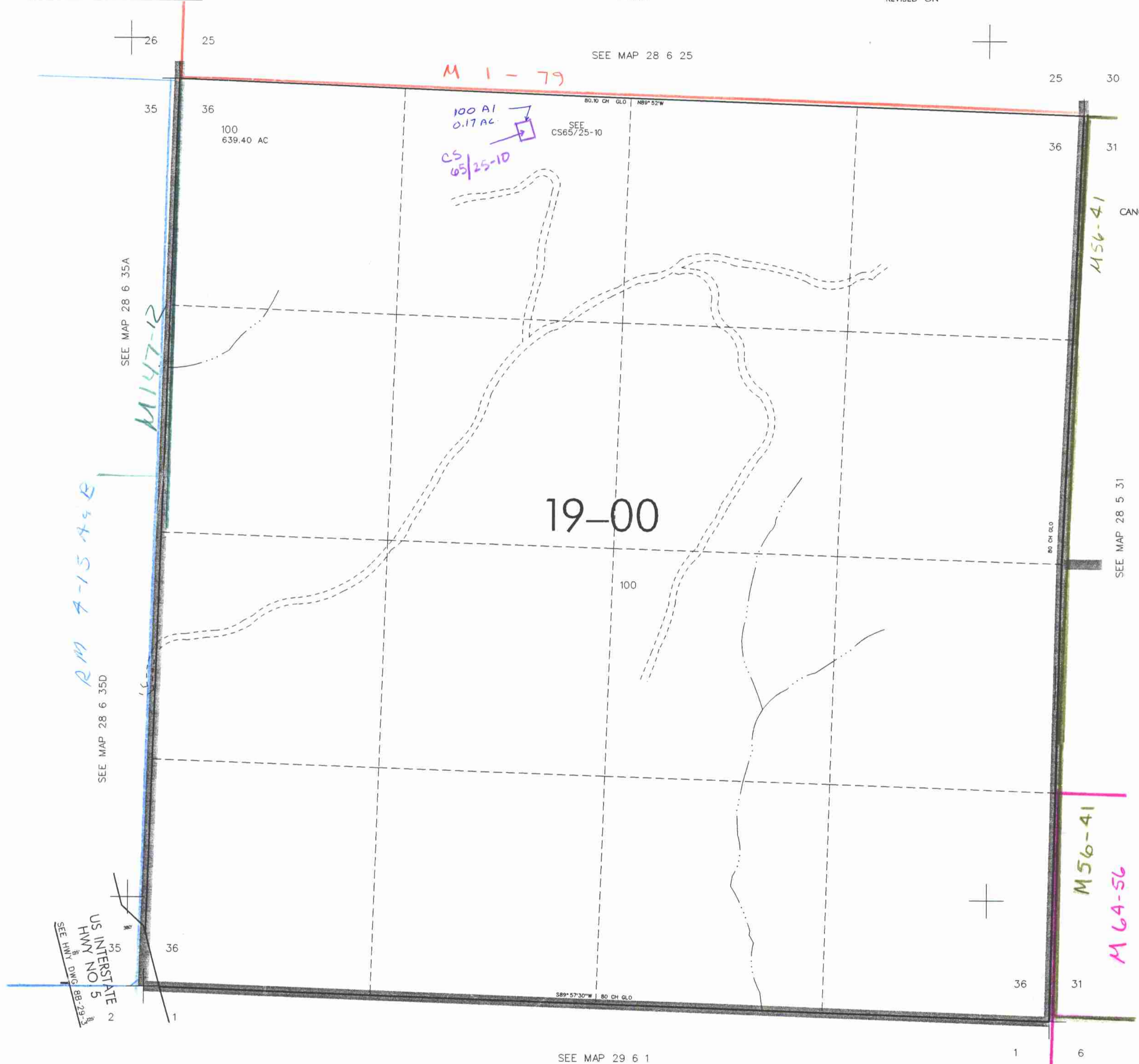
SEC. 36 T.28S. R. 6W W.M.  
DOUGLAS COUNTY

28 6 36

THIS MAP WAS PREPARED FOR  
ASSESSMENT PURPOSE ONLY

1"=400'

REVISED ON



CANCELLED NO'S

SEE MAP 28 5 31

530,000

SEE MAP 29 6 1

4,161,000

28 6 36

4/2000  
NW