

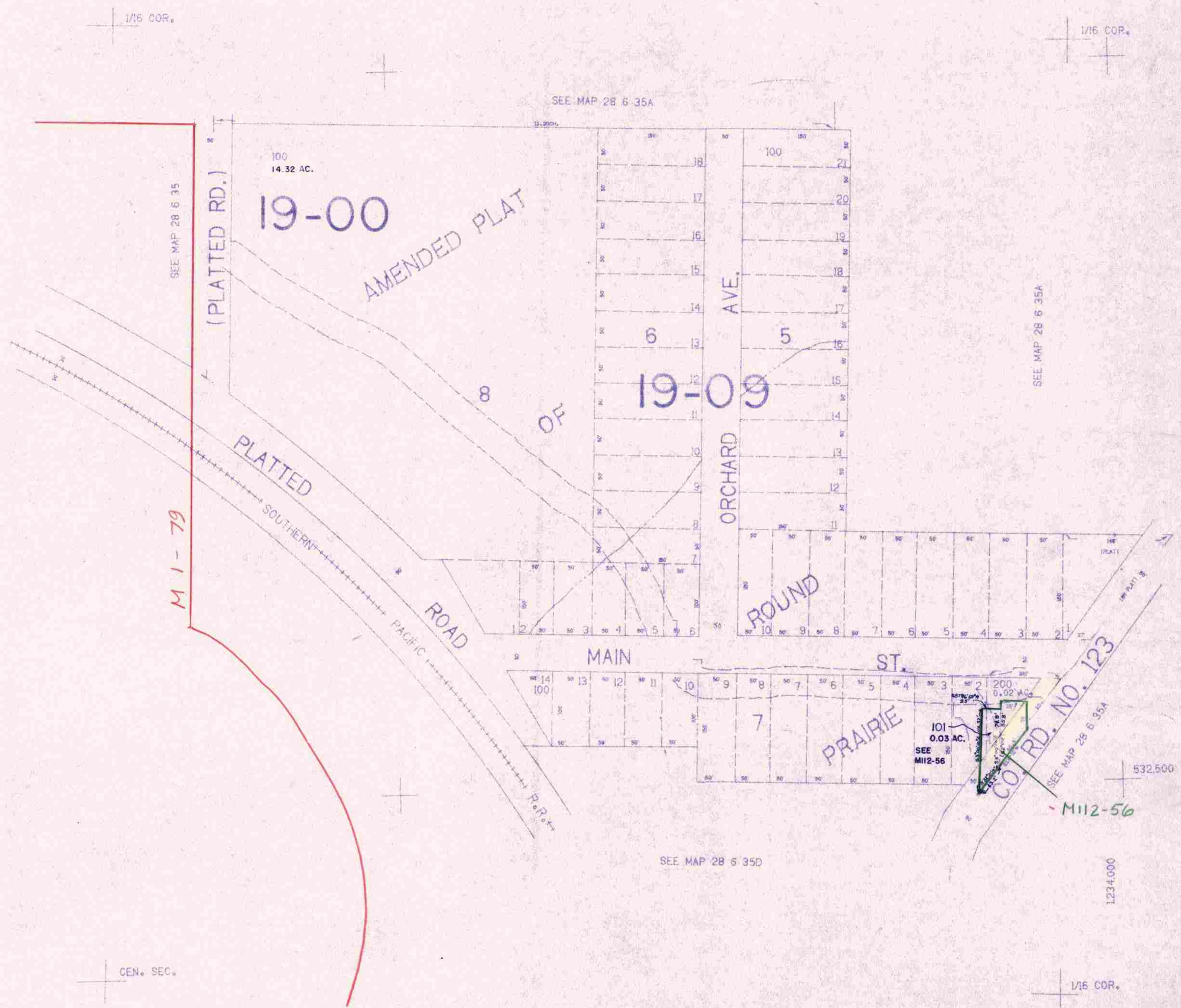
SW1/4 NE1/4 SEC.35 T.28S. R.6W. W.M.
DOUGLAS COUNTY

REVISED ON
10-29-92

28 6 35AC

THIS MAP WAS PREPARED FOR
ASSESSMENT PURPOSE ONLY.

1"=400'



28 6 35AC

11/92 *bc*