

THIS MAP WAS PREPARED FOR ASSESSMENT PURPOSE ONLY.

SEE MAP 28 6 26D

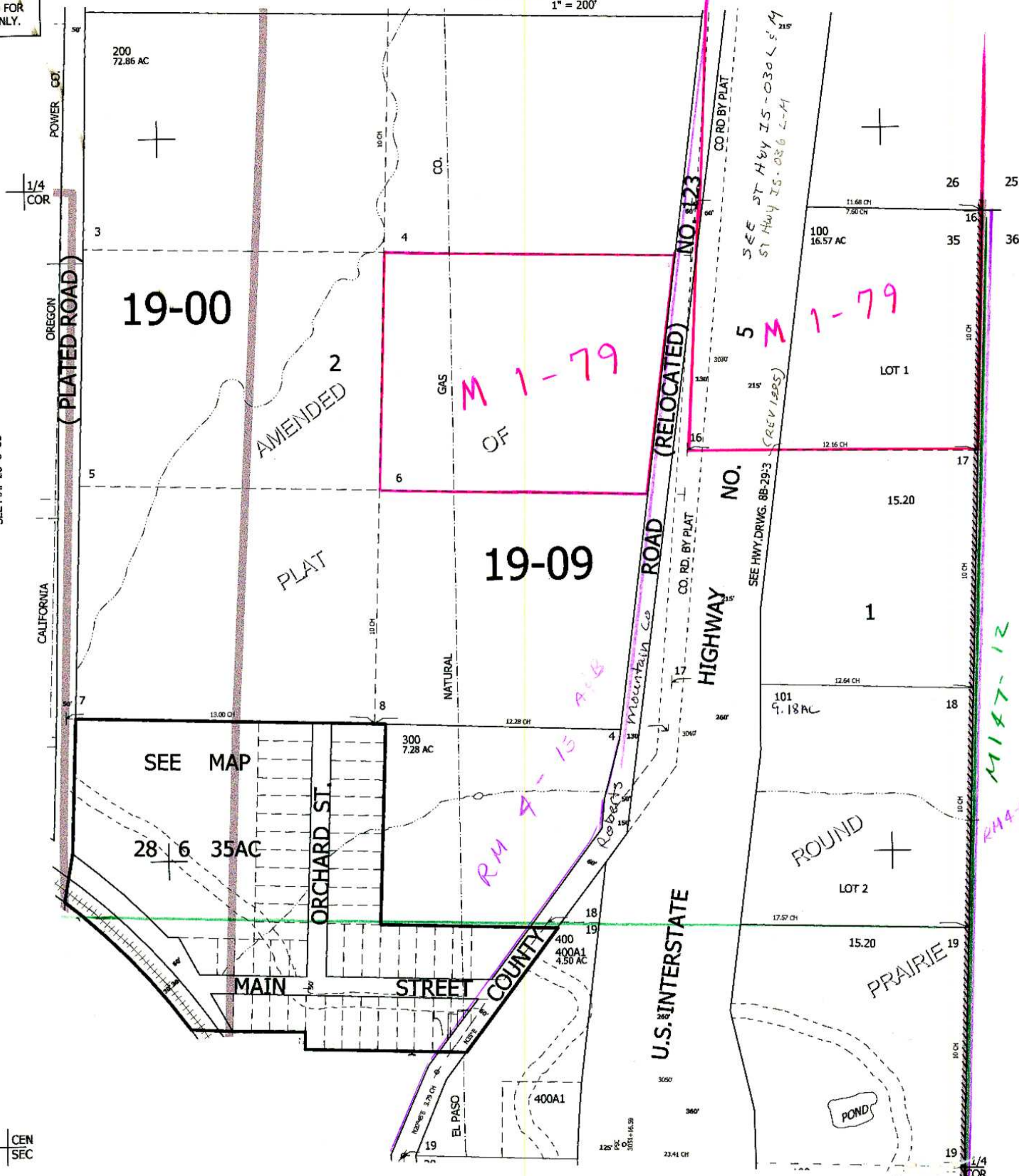
NE1/4 SEC.35 T.28S. R.6W. W.M.
DOUGLAS COUNTY
1" = 200'

REVISED ON
2-25-04

28 6 35A
& INDEX

SEE MAP 28 6 35

CEN
SEC



CANCELLED NO'S

SEE MAP 28 6 36

SEE MAP 28 6 35D

28 6 35A
& INDEX
3/04 JP