

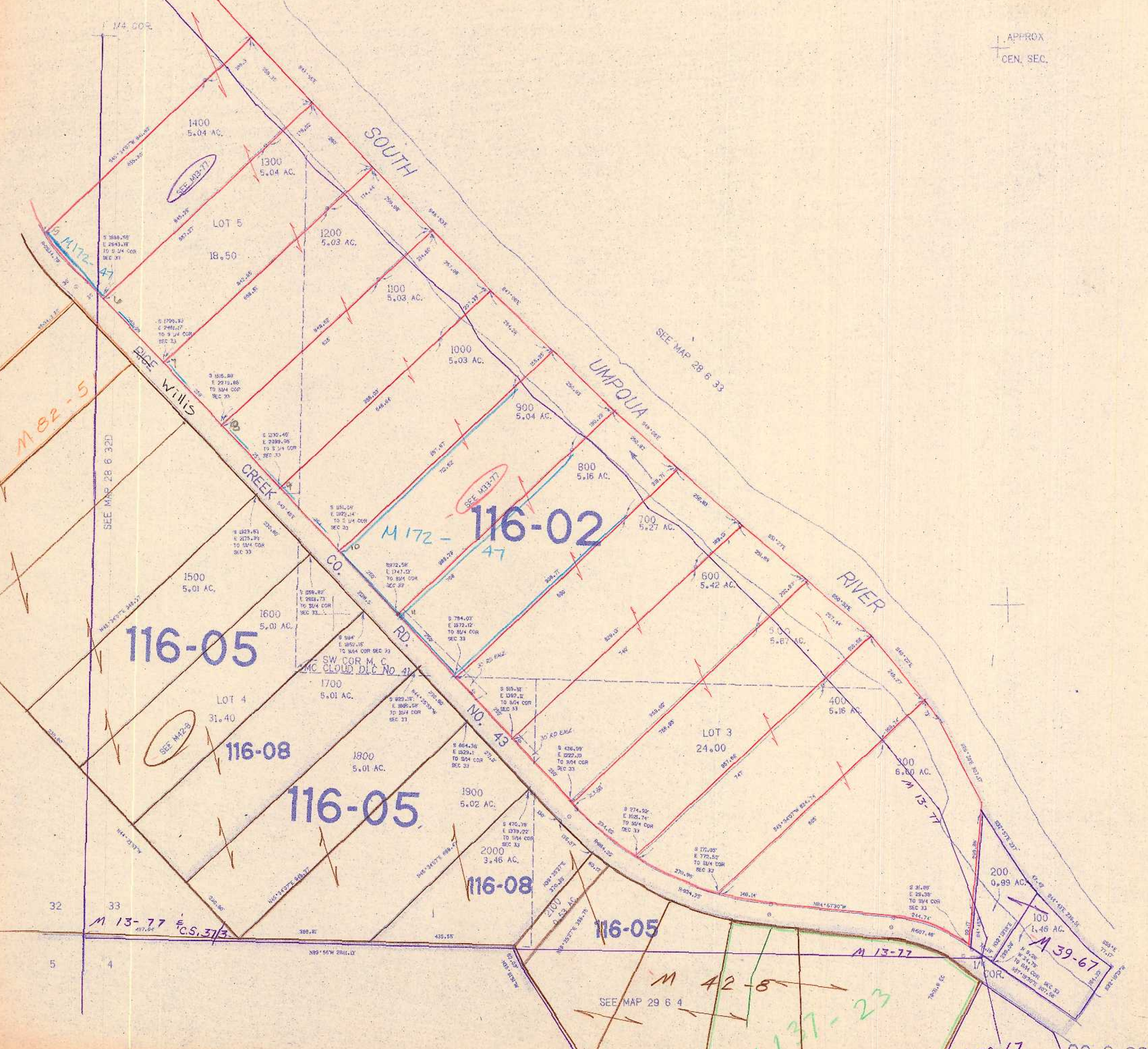
SW1/4 SEC. 33 T.28S. R.6W. W.M.
DOUGLAS COUNTY

28 6 33C

THIS MAP WAS PREPARED FOR
ASSESSMENT PURPOSE ONLY.

1"=200'

APPROX
CEN. SEC.



531,000

CHECKED
TRACED
LATVOT

28 6 33C

3/82 BS