

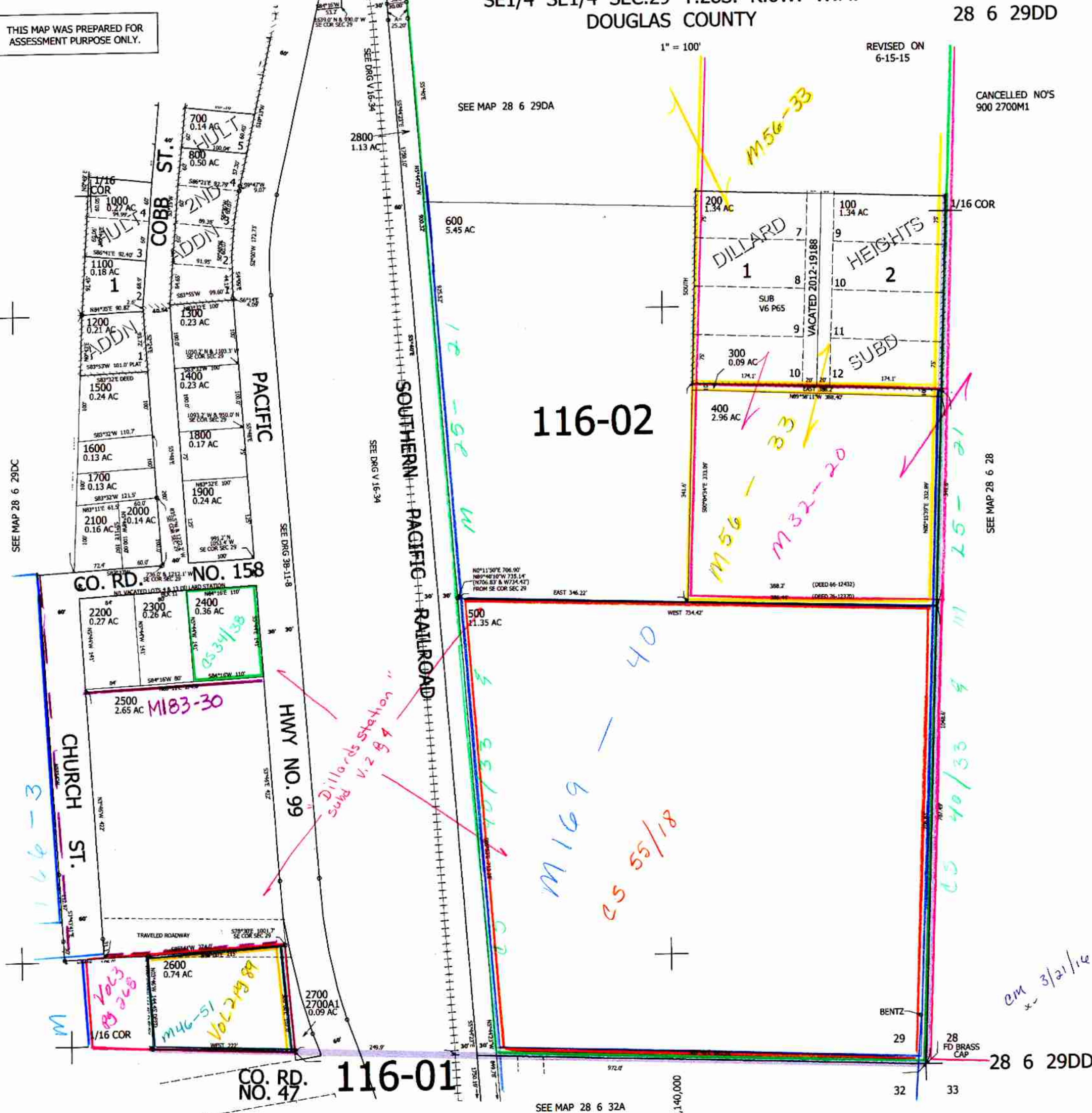
THIS MAP WAS PREPARED FOR  
ASSESSMENT PURPOSE ONLY.

1" = 100'

REVISED ON  
6-15-15

CANCELLED NO'S  
900 2700M1

SEE MAP 28 6 29DA



116-02

116-01

28 6 29DD

SEE MAP 28 6 32A

4,140,000

em 3/21/14

SEE MAP 28 6 29DC

SEE DRG 38-11-8

SEE DRG V 16-34

SEE MAP 28 6 28