

THIS MAP WAS PREPARED FOR ASSESSMENT PURPOSE ONLY.

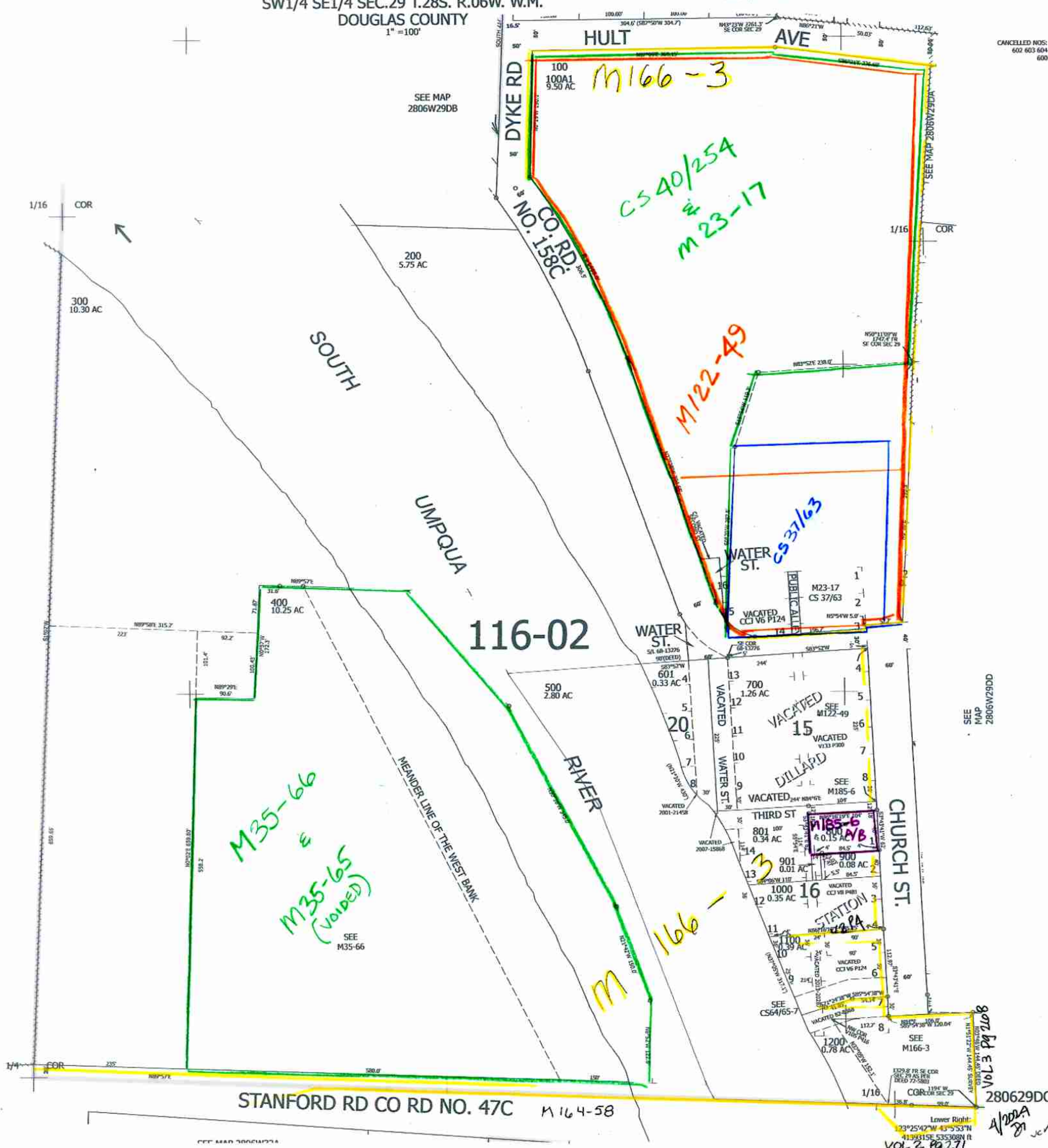
Upper Left:
123°26'10"W 43°6'10"N
4137352E 537087N II

SW1/4 SE1/4 SEC.29 T.28S. R.06W. W.M.
DOUGLAS COUNTY
1" = 100'

Date Exported 2024-03-26

280629DC

CANCELLED NOS:
602 603 604
600



SEE MAP 2806W29

SEE MAP 2806W29DD

807E Vol 3 Pg 108

280629DC

Lower Right:
123°25'42"W 43°5'53"N
4139315E 535308N II
VOL 2 Pg 271

1/2024
JC