

APPROX.
1/16 COR.

SE1/4 NE1/4 SEC.29 T.28S. R.6W. W.M.
DOUGLAS COUNTY

APPROX.
1/16 COR.

THIS MAP WAS PREPARED FOR
ASSESSMENT PURPOSE ONLY.

REVISED ON
9-30-91

28 6 29AD

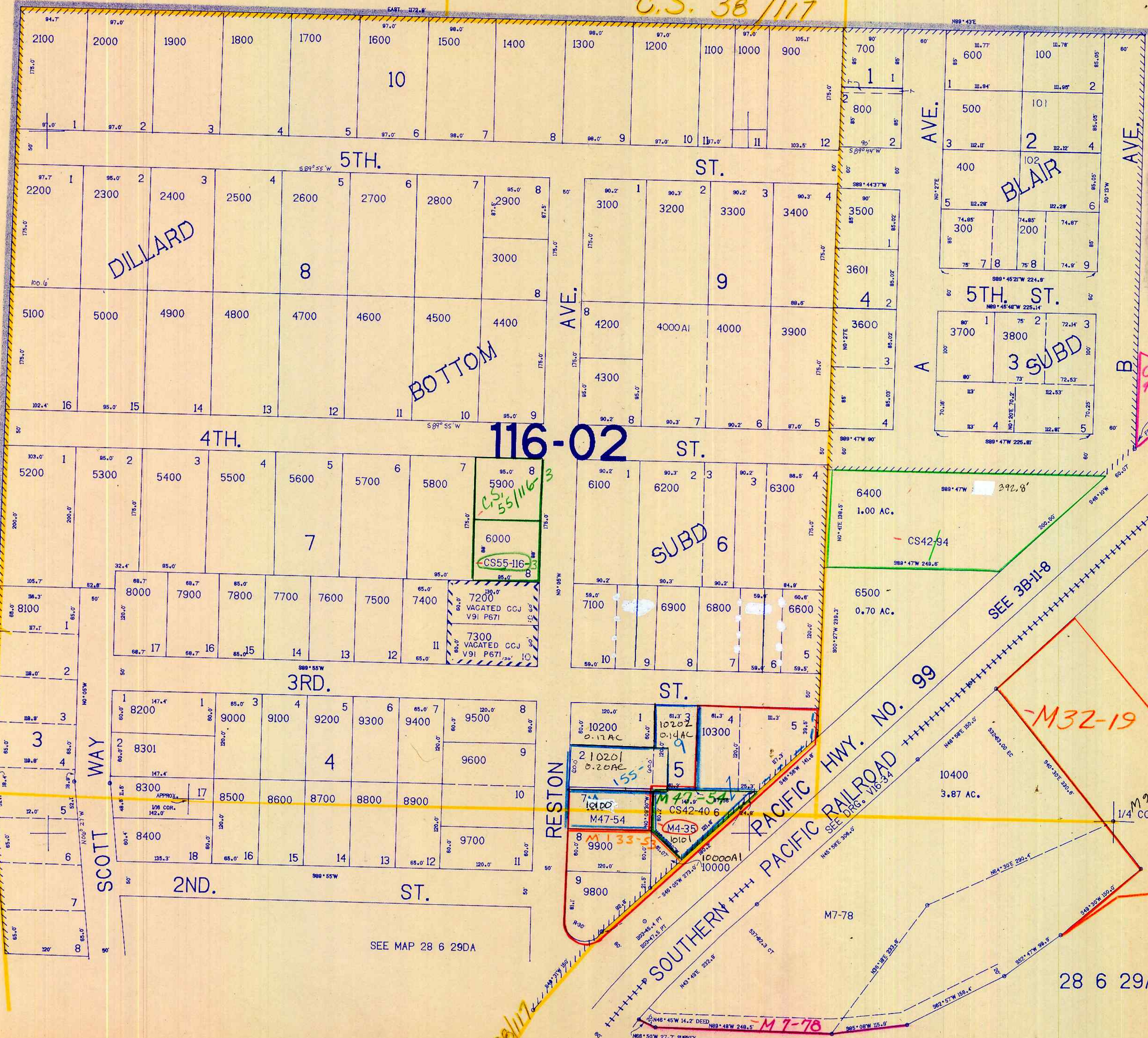
SEE MAP 28 6 29A

C.S. 38/117

Cancel Parcel
701
4100

SEE MAP 28 6 29A

C.S. 38/117



Cancelled
6700
7000
6701
7001

C.S. 12/190
FR E 1/4 COR SEC 29

SEE MAP 28 6 28B

1/4 COR.
538,000

28 6 29AD

C.S. 38/117

1,219,000

10/91
D.M.