

THIS MAP WAS PREPARED FOR
ASSESSMENT PURPOSE ONLY

NE 1/4 SEC. 28 T.28S. R.6 W W.M.
DOUGLAS COUNTY

REVISED ON
4-3-98

28 6 28A

1"=200'

M 36-28
M 28-47

SEE MAP 28 6 21DD

Vol 19
Pg 28

VOL 3 PG 10

M 134-46

CANCELLED NO'S
200 302

SEE MAP 28 6 27BB

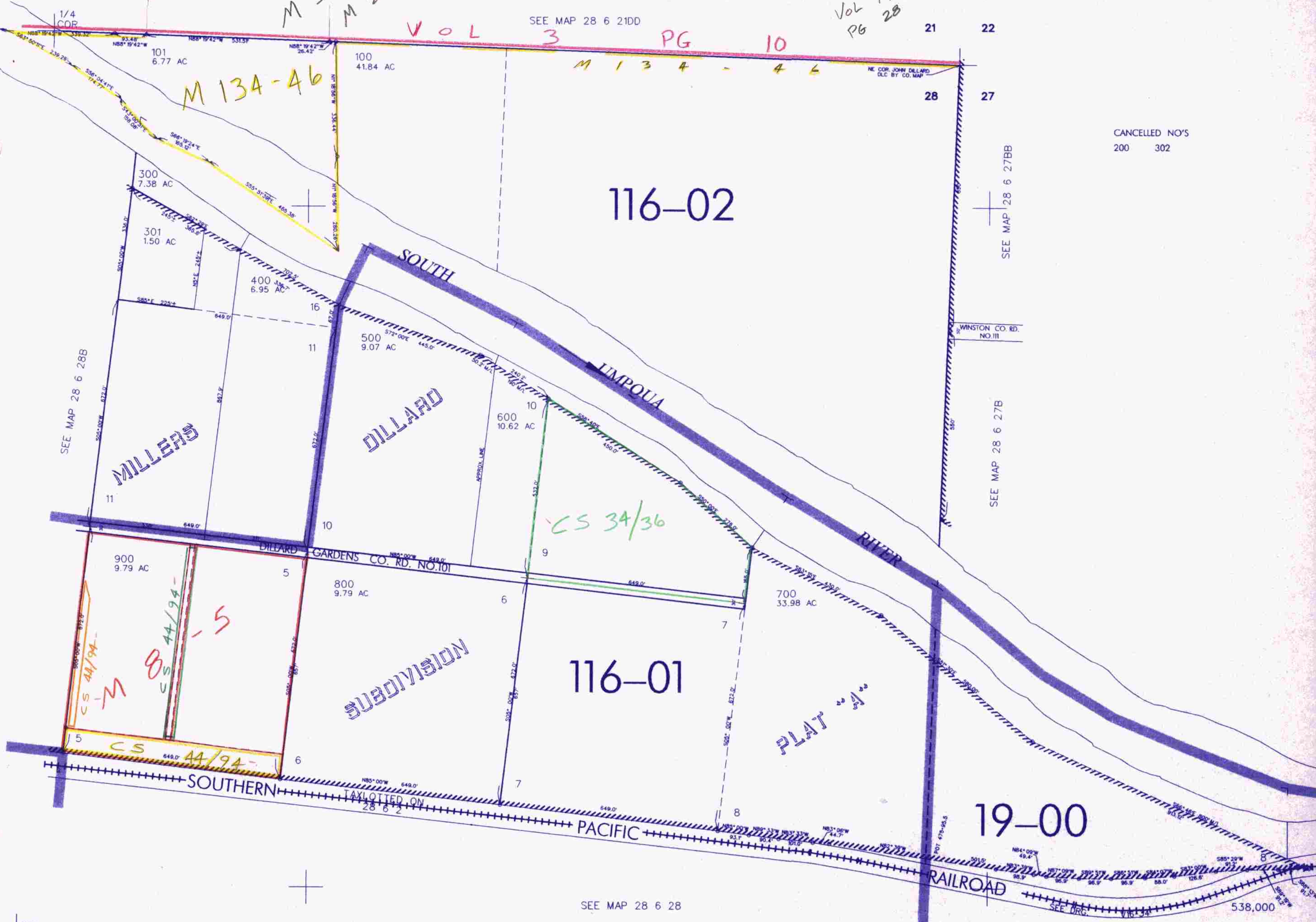
WINSTON CO. RD.
NO. 111

SEE MAP 28 6 27B

116-02

116-01

19-00



SEE MAP 28 6 28B

SEE MAP 28 6 28

SEE DRG.

538,000

CEN
SEC

1/4
COR

4,146,000

28 6 28A

4/98 JP