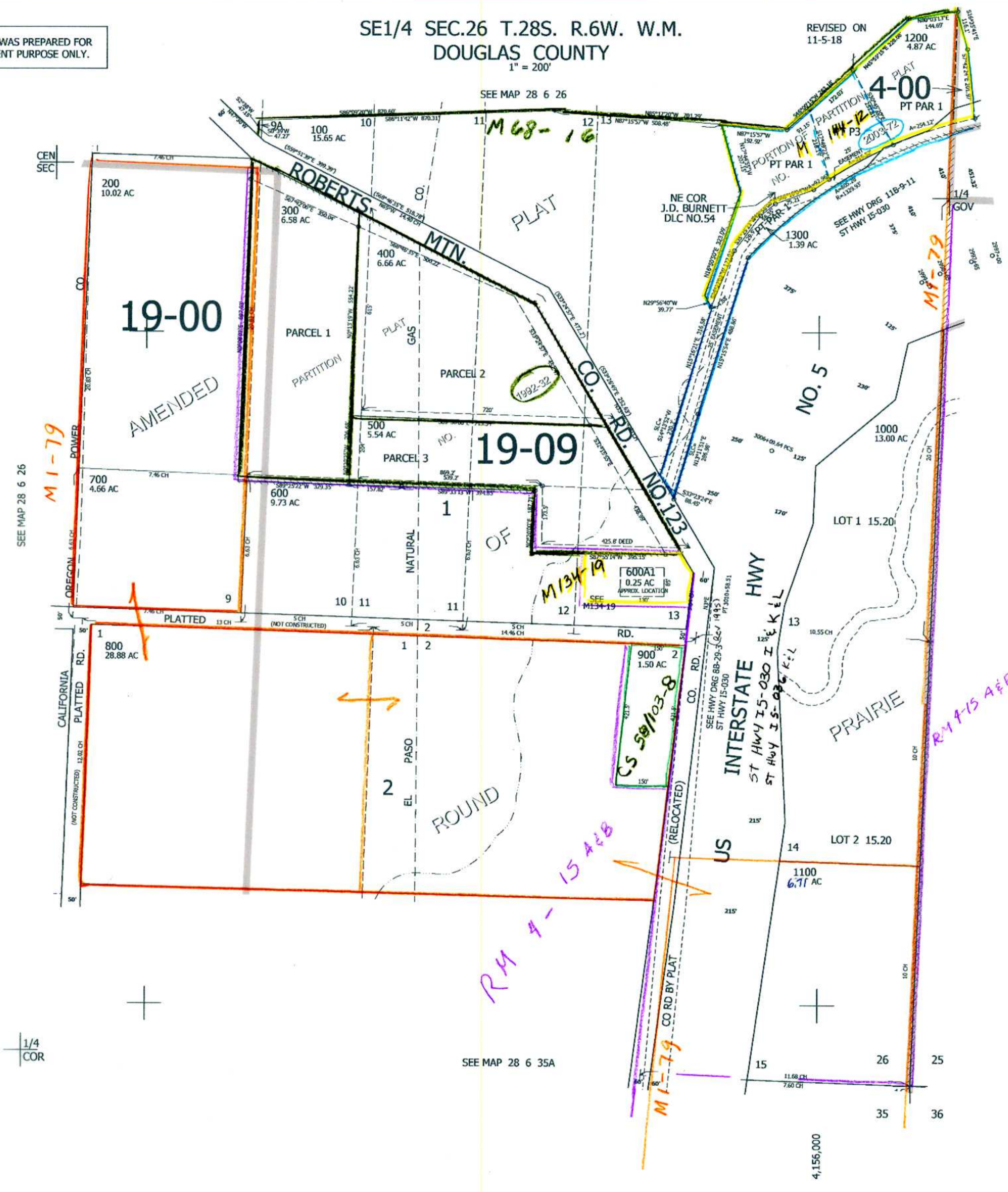


THIS MAP WAS PREPARED FOR ASSESSMENT PURPOSE ONLY.

SE1/4 SEC.26 T.28S. R.6W. W.M.
DOUGLAS COUNTY
1" = 200'

REVISED ON
11-5-18

28 6 26D



CANCELLED NO'S
301 201 302
201M1 501 601
602 701 200M1

SEE MAP 28 6 26

SEE MAP 28 6 25

SEE MAP 28 6 35A

535,000

4,156,000

28 6 26D

8/2018