

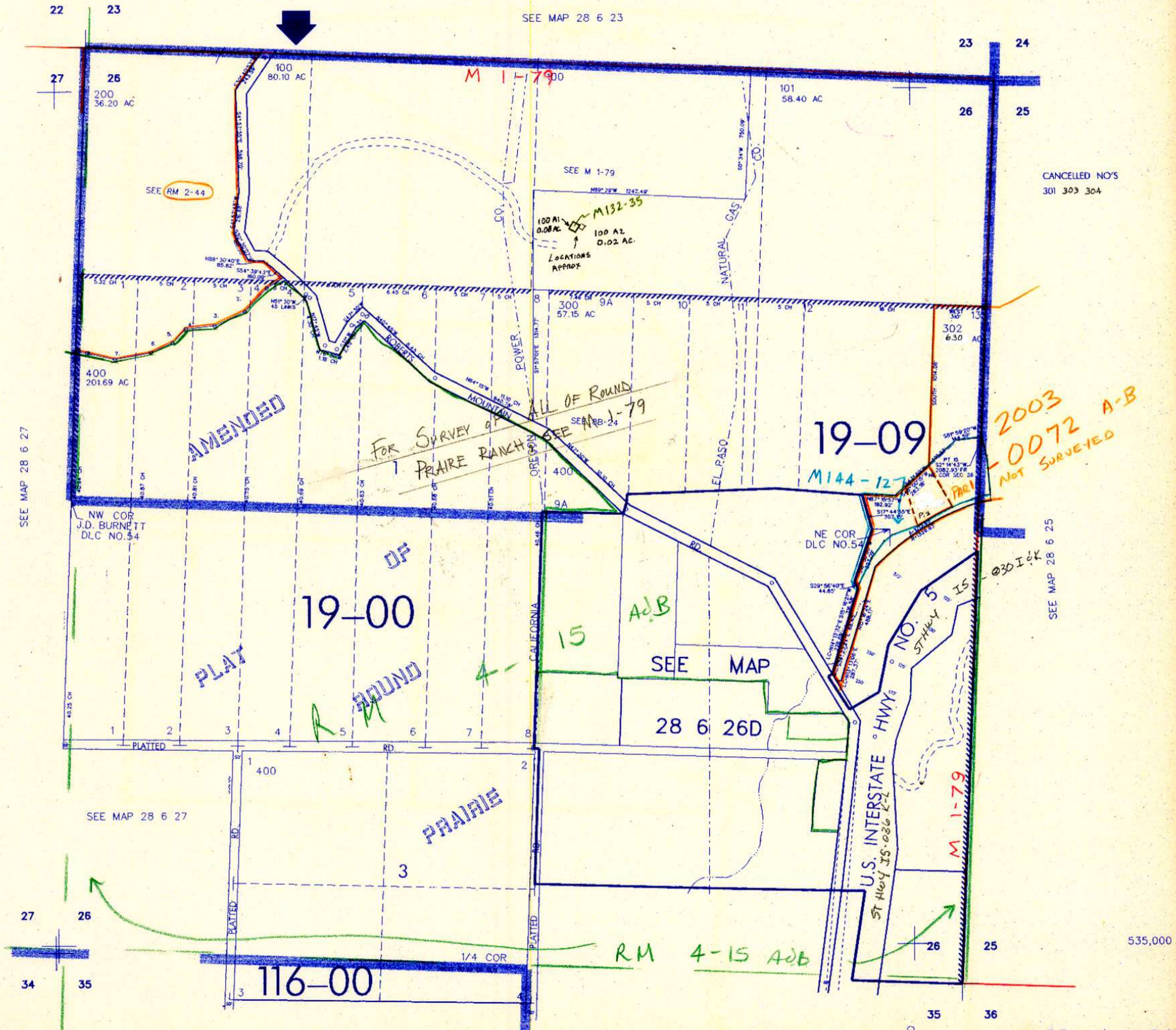
THIS MAP WAS PREPARED FOR ASSESSMENT PURPOSE ONLY

SEC. 26 T.28S. R.6 W W.M. DOUGLAS COUNTY

REVISED ON 9-9-98 4-16-04

28 6 26 & INDEX

1"=400'



SEE MAP 28 6 27

SEE MAP 28 6 23

CANCELLED NO'S 301 303 304

2003-0072 A-B NOT SURVEYED

SEE MAP 28 6 25

535,000

SEE MAP 28 6 35

SEE MAP 28 6 35A

28 6 26 & INDEX
2/99 B.F.