

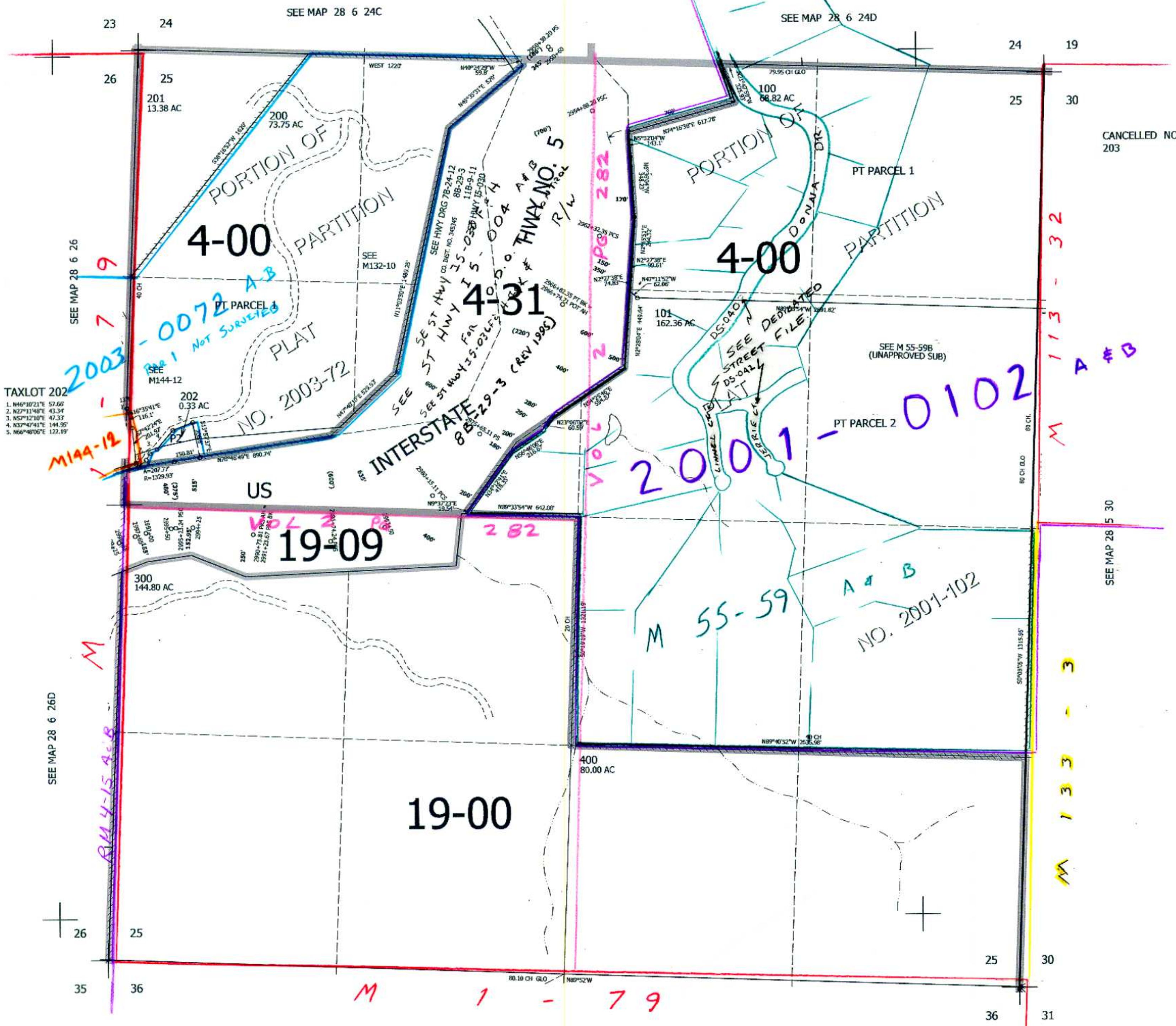
SEC.25 T.28S. R.6W. W.M.  
DOUGLAS COUNTY

REVISED ON  
7-31-18

28 6 25

THIS MAP WAS PREPARED FOR  
ASSESSMENT PURPOSE ONLY.

1" = 400'



TAXLOT 202  
 1. N46°10'21"E 57.66'  
 2. N27°11'48"E 43.34'  
 3. N57°12'10"E 47.33'  
 4. N37°47'41"E 144.95'  
 5. N66°46'06"E 122.19'

CANCELLED NO'S  
203

SEE MAP 28 6 30

SEE MAP 28 6 26D

SEE MAP 28 6 24C

SEE MAP 28 6 24D

SEE MAP 28 6 36

4,161,000

1/02 JP NW  
28 6 25