

THIS MAP WAS PREPARED FOR ASSESSMENT PURPOSE ONLY.

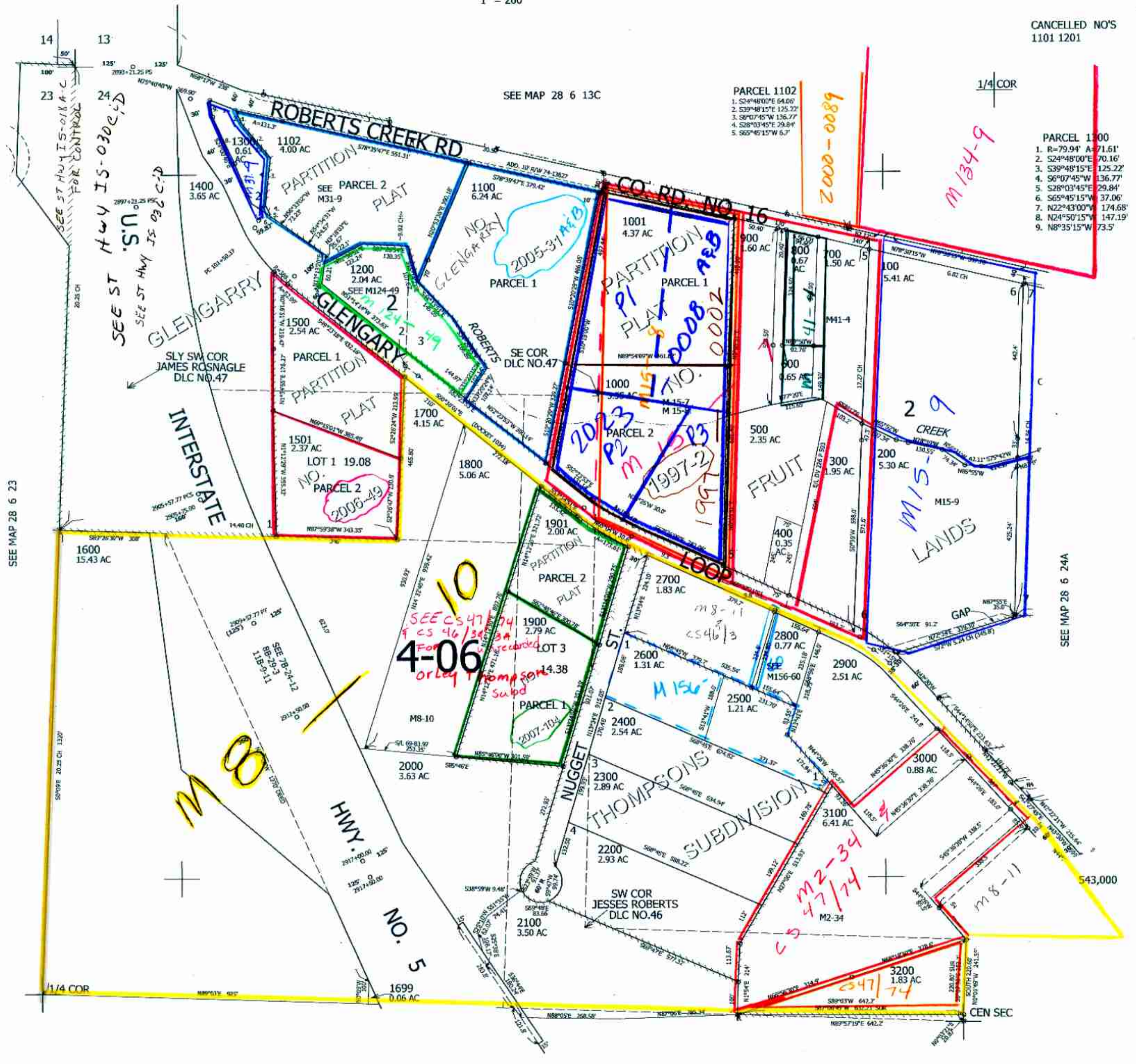
NW1/4 SEC.24 T.28S. R.6W. W.M. DOUGLAS COUNTY

REVISED ON 6-19-18

28 6 24B

1" = 200'

CANCELLED NO'S 1101 1201



PARCEL 1102
 1. S24°48'00"E 64.00'
 2. S39°48'15"E 125.22'
 3. S67°45'W 136.77'
 4. S28°03'45"E 29.84'
 5. S65°45'15"W 6.7'

PARCEL 1100
 1. R=79.94' A=71.61'
 2. S24°48'00"E 70.16'
 3. S39°48'15"E 125.22'
 4. S67°45'W 136.77'
 5. S28°03'45"E 29.84'
 6. S65°45'15"W 37.06'
 7. N22°43'00"W 174.68'
 8. N24°50'15"W 147.19'
 9. N8°35'15"W 73.5'

SEE CS 47/74
 & CS 46/34/34
 4-06
 For recording
 orley Thompson
 subd

M 00

M 2-34
 47/74

M 8-11

SEE MAP 28 6 24C

SEE MAP 28 6 24D

4,159,000

cm 8/16/07

28 6 24B