

NE1/4 NE1/4 SEC.23 T.30S. R.6W. W.M.
DOUGLAS COUNTY

REVISED ON
7-31-96

30 6 23AA
RIDDLE

THIS MAP WAS PREPARED FOR
ASSESSMENT PURPOSE ONLY.

APPROX.
1/16 COR.

SEE MAP 30 6 23A

APPROX.
1/16 COR.

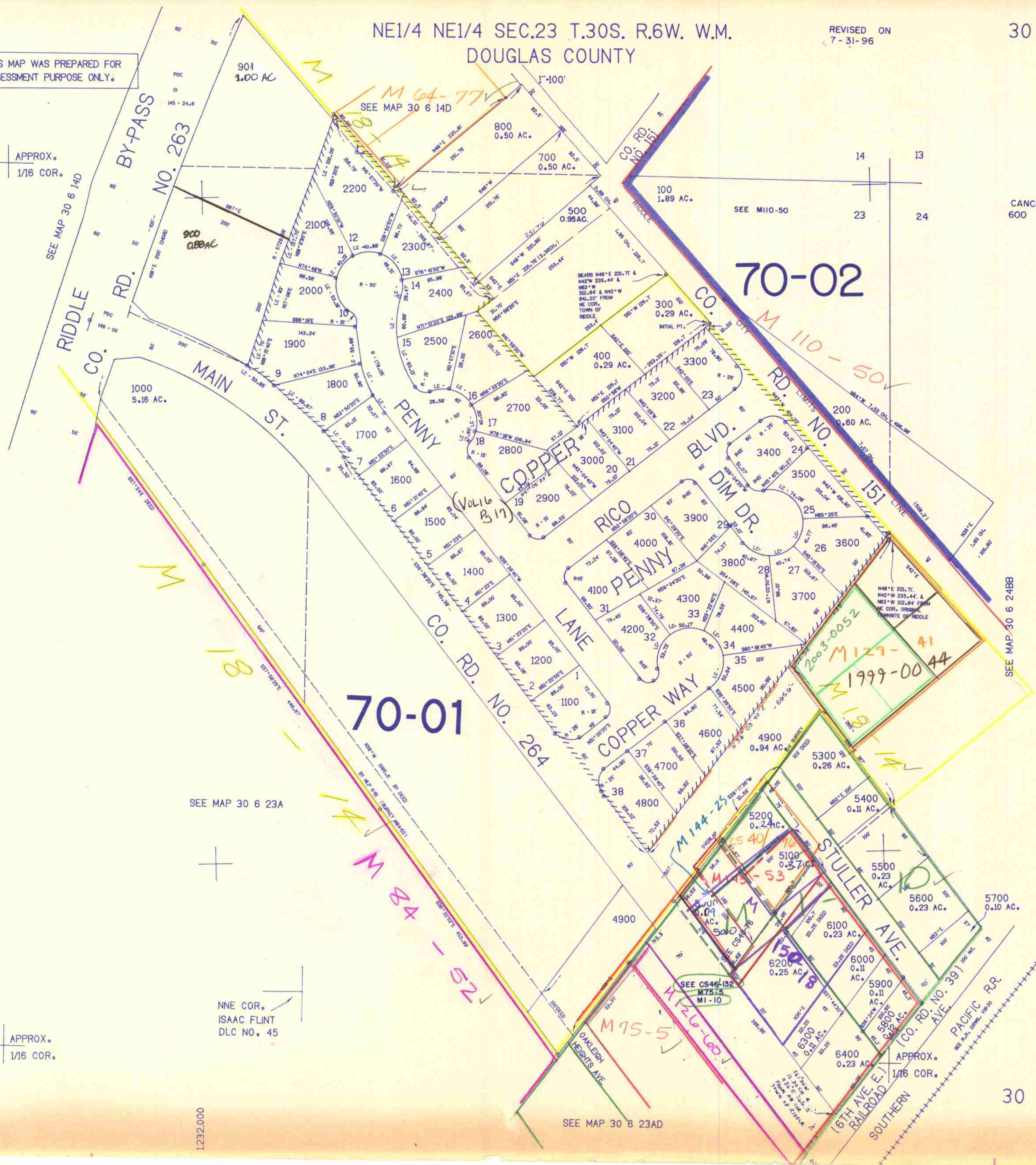
1232.000

SEE MAP 30 6 23AD

CANCELLED NO'S
600

482.000

30 6 23AA
RIDDLE



SEE MAP 30 6 14D

SEE MAP 30 6 14D

70-02

70-01

SEE MAP 30 6 23A

SEE MAP 30 6 24BB

NNE COR.
ISAAC FLINT
DLC NO. 45

SEE CS46-132
M75-5
M1-10

APPROX.
1/16 COR.

AP
2/10/96