

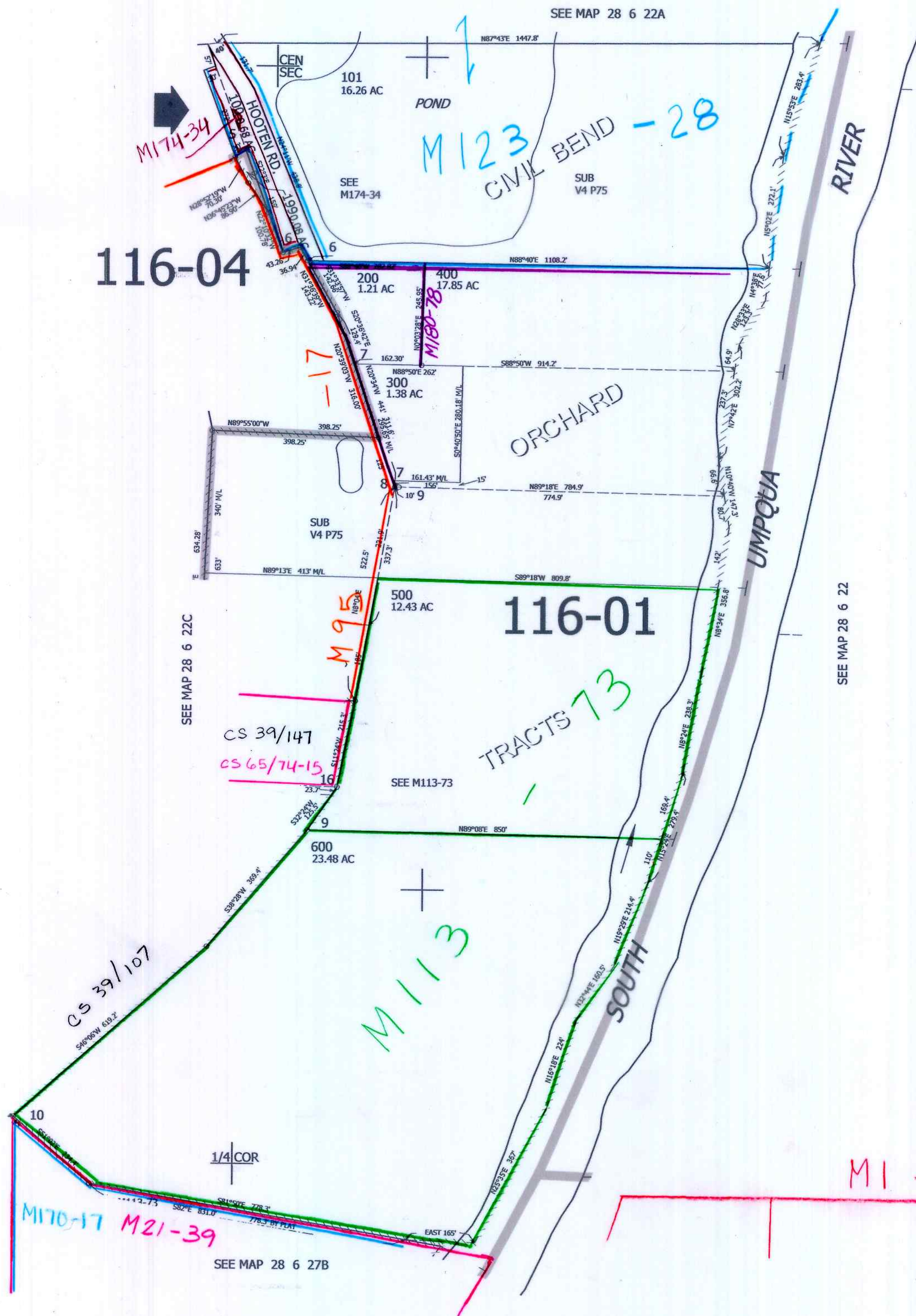
THIS MAP WAS PREPARED FOR ASSESSMENT PURPOSE ONLY.

SE1/4 SEC.22 T.28S. R.6W. W.M.
DOUGLAS COUNTY

1" = 200'

REVISED ON
3-8-22

28 6 22D
WINSTON



1/4 COR

CANCELLED NO'S
201 301

541,000

22 23

27 26

28 6 22D
WINSTON

3/20/22
SCV

4,151,000