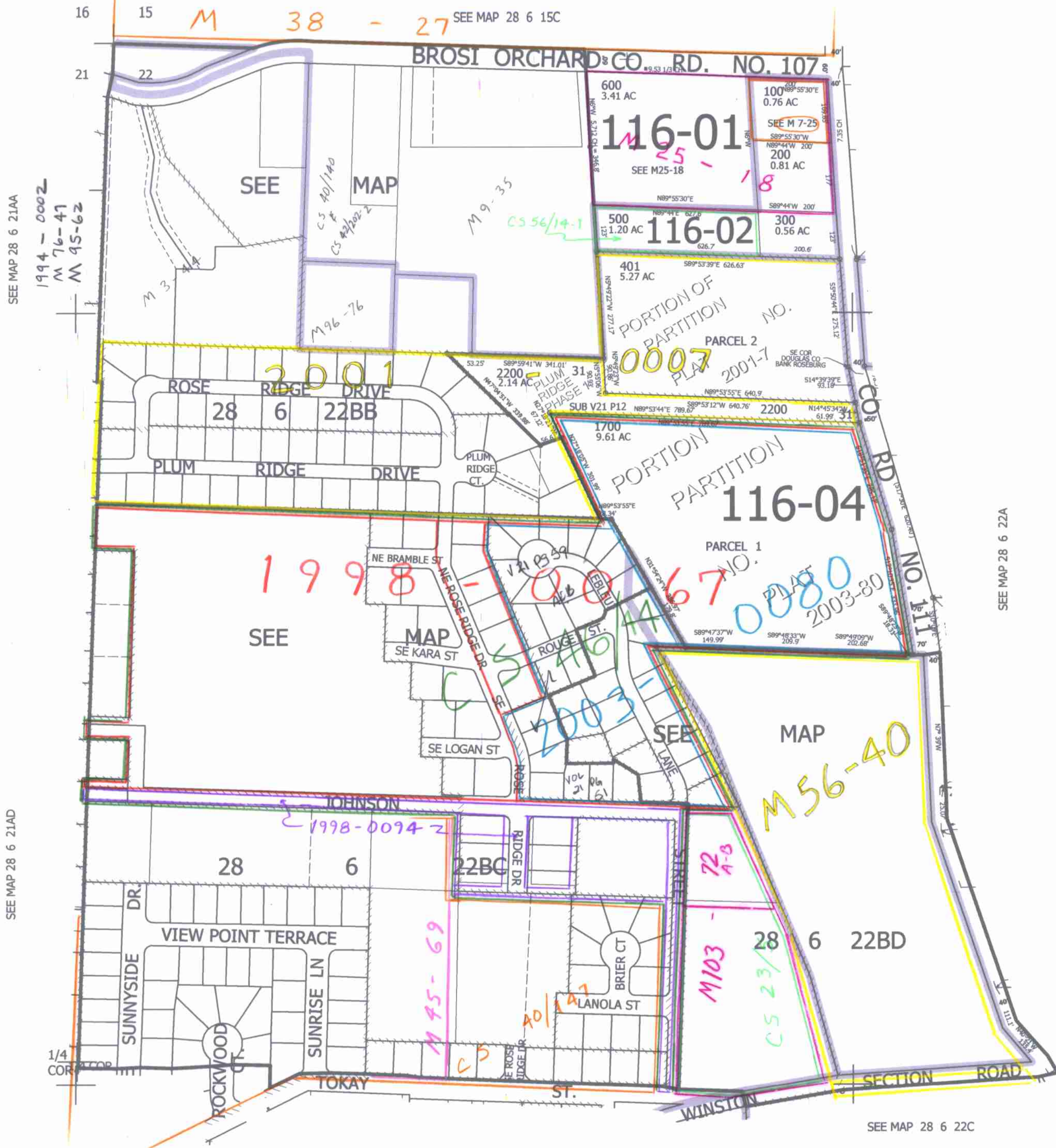


THIS MAP WAS PREPARED FOR ASSESSMENT PURPOSE ONLY.

NW1/4 SEC.22 T.28S. R.6W. W.M.  
DOUGLAS COUNTY  
1" = 200'

REVISED ON  
6-24-10

28 6 22B  
& INDEX  
WINSTON



1/4  
COR

CANCELLED NO'S  
700 THRU 1600  
400 2000 2001  
2100 1701 1702  
1703 1704 1800  
1801 1802 1900

SEE MAP 28 6 22A

SEE MAP 28 6 21AA  
1994-0002  
M 76-41  
M 95-62

SEE MAP 28 6 21AD

1/4  
COR

CEN  
SEC

544,000

SEE MAP 28 6 22C

SEE MAP 28 6 22CB

4,148,000

28 6 22B  
& INDEX  
WINSTON

12/03 SP 176