

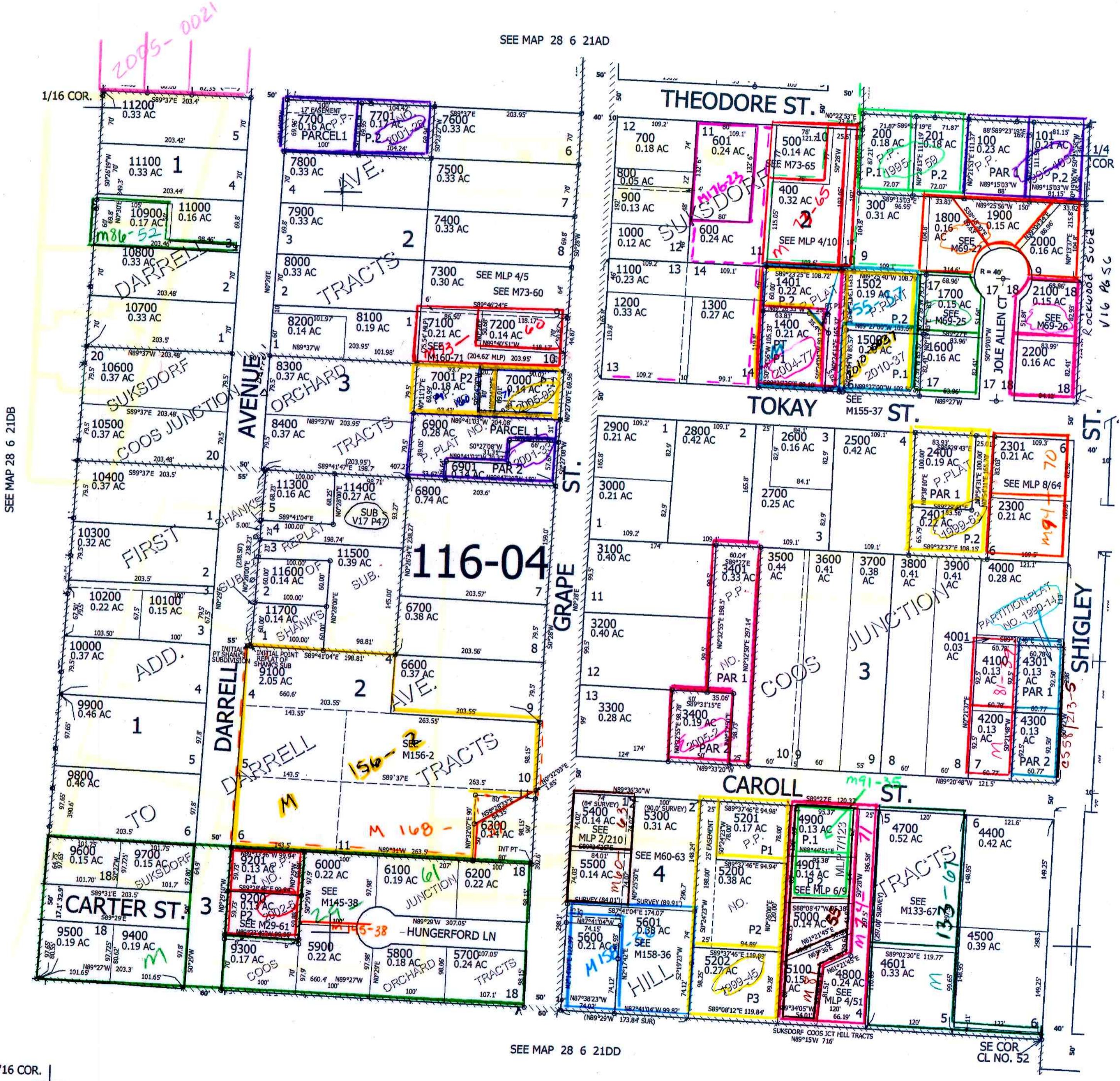
THIS MAP WAS PREPARED FOR ASSESSMENT PURPOSE ONLY.

NE1/4 SE1/4 SEC.21 T.28S. R.6W. W.M.  
DOUGLAS COUNTY  
1" = 100'

REVISED ON  
10-28-14

28 6 21DA  
WINSTON

CANCELLED NO'S  
8600 8700 8800  
8900 3402 8500  
9000 4600 7002  
6500A1 1402 1501  
7003 6500A2 6301  
6401 6400 6501  
6500



SEE MAP 28 6 21DB

SEE MAP 28 6 21AD

SEE MAP 28 6 22CB

SEE MAP 28 6 21DD

1/16 COR.

1/16 COR.

4,146,000  
28 6 21DA  
WINSTON

542,000

*Am Huber*