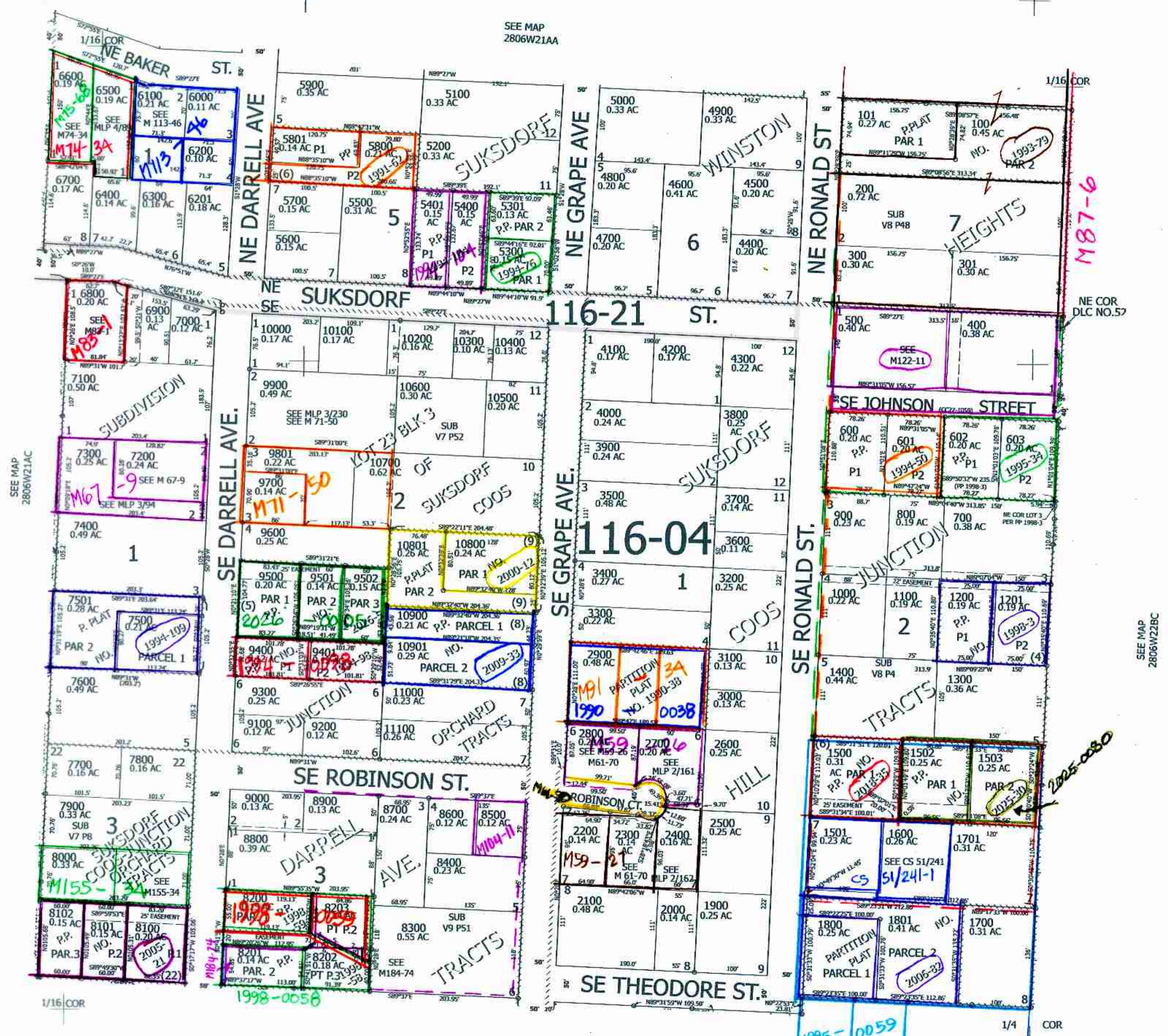


SE1/4.NE1/4 SEC.21 T.28S. R.06W. W.M.  
DOUGLAS COUNTY  
1" = 100'

ELS 8202 & 8203  
7°27'24"W 45.85'  
9°44'30"E 42.49'  
7°26'44"W 17.35'  
7°03'34"E 20.12'  
9°46'04"E 25.71'  
9°41'30"W 42.50'  
32°56'E 17.38'



7/2025 sev  
280621AD  
Winston