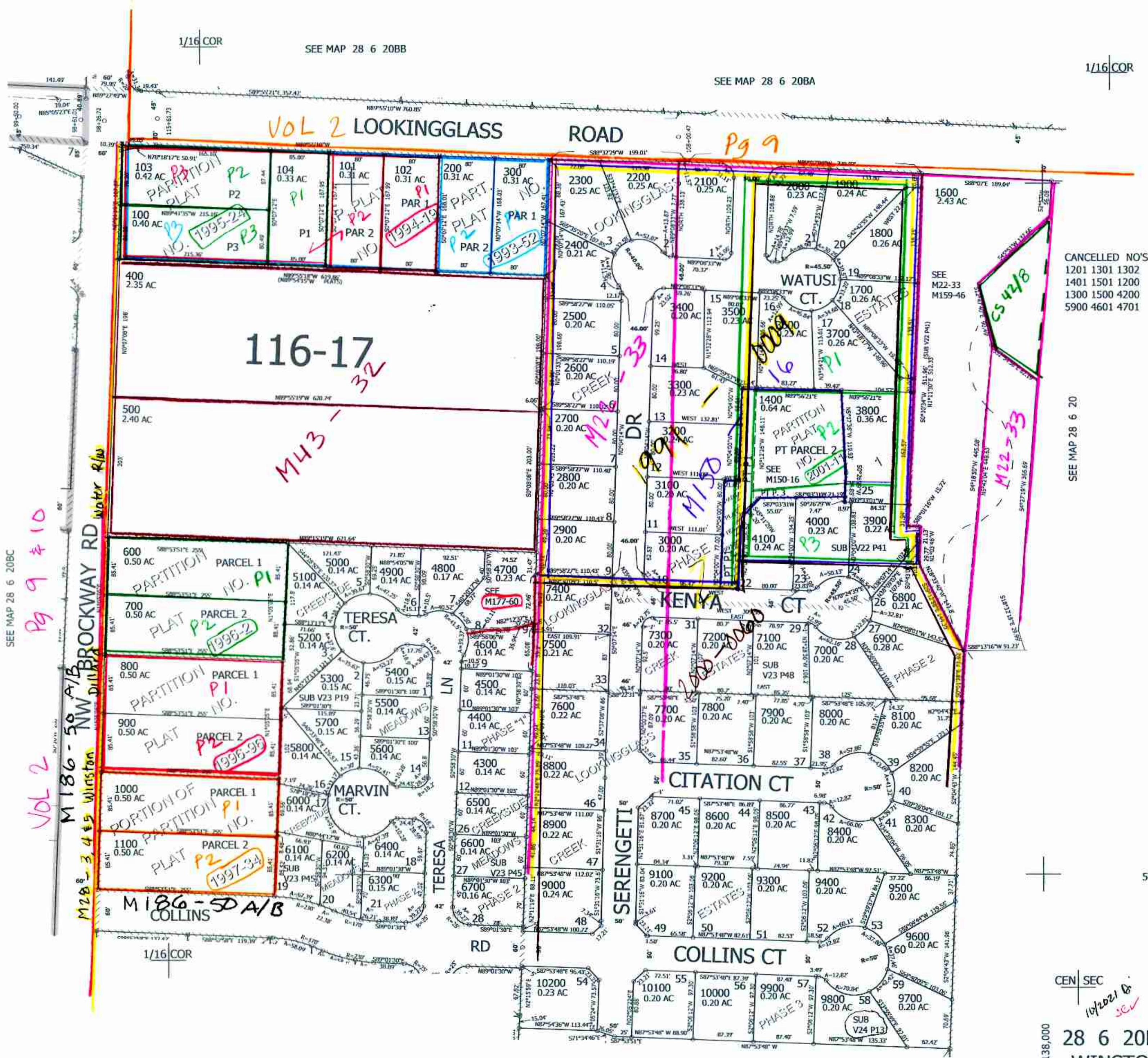


THIS MAP WAS PREPARED FOR ASSESSMENT PURPOSE ONLY.

SE1/4 NW1/4 SEC.20 T.28S. R.6W. W.M. DOUGLAS COUNTY
1" = 100'

REVISED ON 10-21-21

28 6 20BD WINSTON



SEE MAP 28 6 20BC

Pg 9 #10

VOL 2

M208-3,4 & 5 Winston

Water R/W

M186-50 A/B

M186-50 A/B COLLINS

M43-32

116-17

Pg 9

VOL 2 LOOKINGGLASS ROAD

SEE MAP 28 6 20BB

SEE MAP 28 6 20BA

1/16 COR

CANCELLED NO'S
1201 1301 1302
1401 1501 1200
1300 1500 4200
5900 4601 4701

SEE MAP 28 6 20

543,500

SEE MAP 28 6 20CA

CEN SEC 10/2021 to

28 6 20BD WINSTON

4,138,000