

NW1/4 SW1/4 SEC. 15 T.28S. R. 6W W.M.
DOUGLAS COUNTY

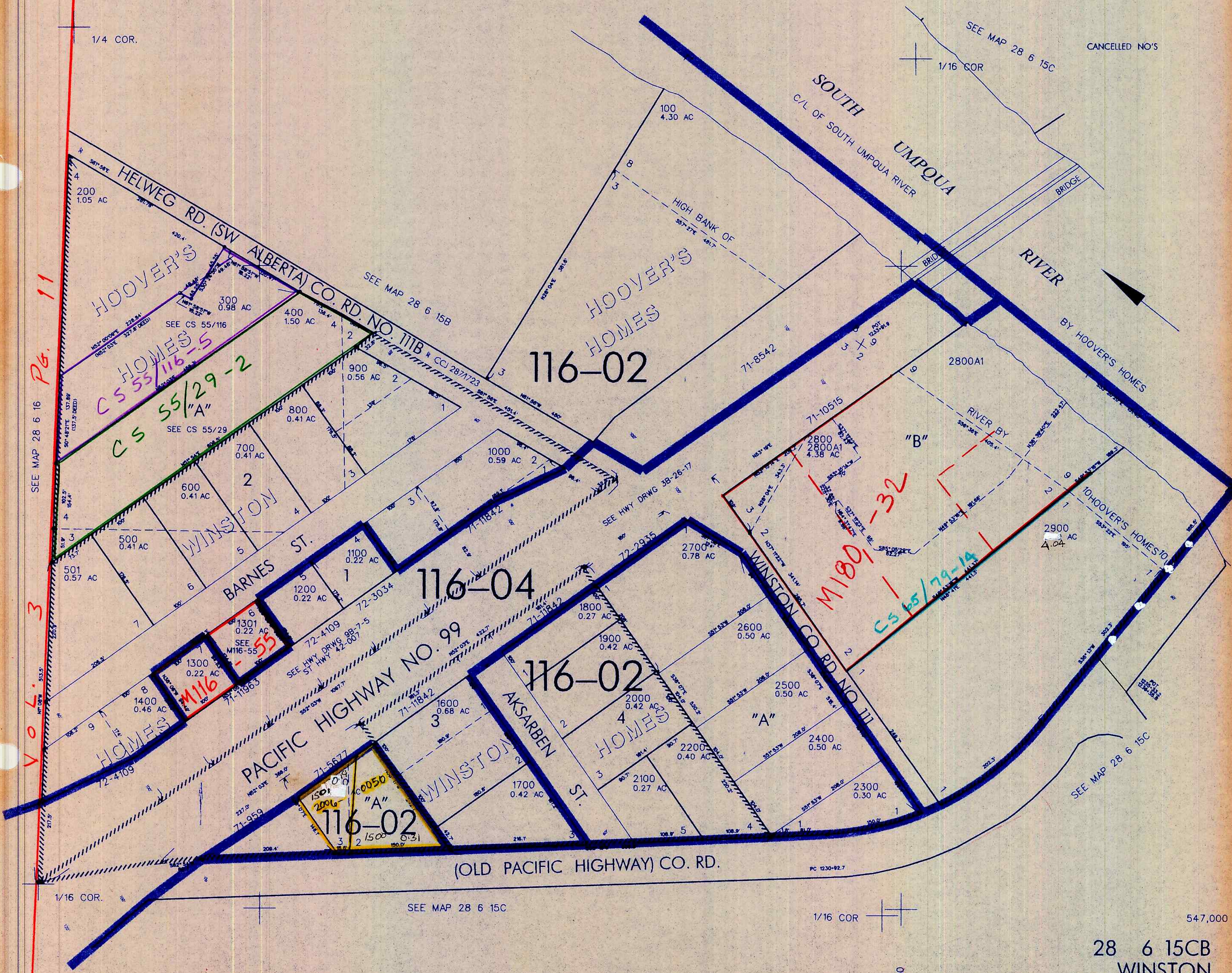
28 6 15CB
WINSTON

THIS MAP WAS PREPARED FOR
ASSESSMENT PURPOSE ONLY

1"=100'

REVISED ON
7-29-03

CANCELLED NO'S



Vol. 3 Pg. 11

M180-32
CS 65/79-14

M116-55

M116-55
CS 0050
1500
0.31

nw 8/03 JP