

THIS MAP WAS PREPARED FOR ASSESSMENT PURPOSE ONLY.

SW1/4 SEC.15 T.28S. R.6W. W.M.  
DOUGLAS COUNTY

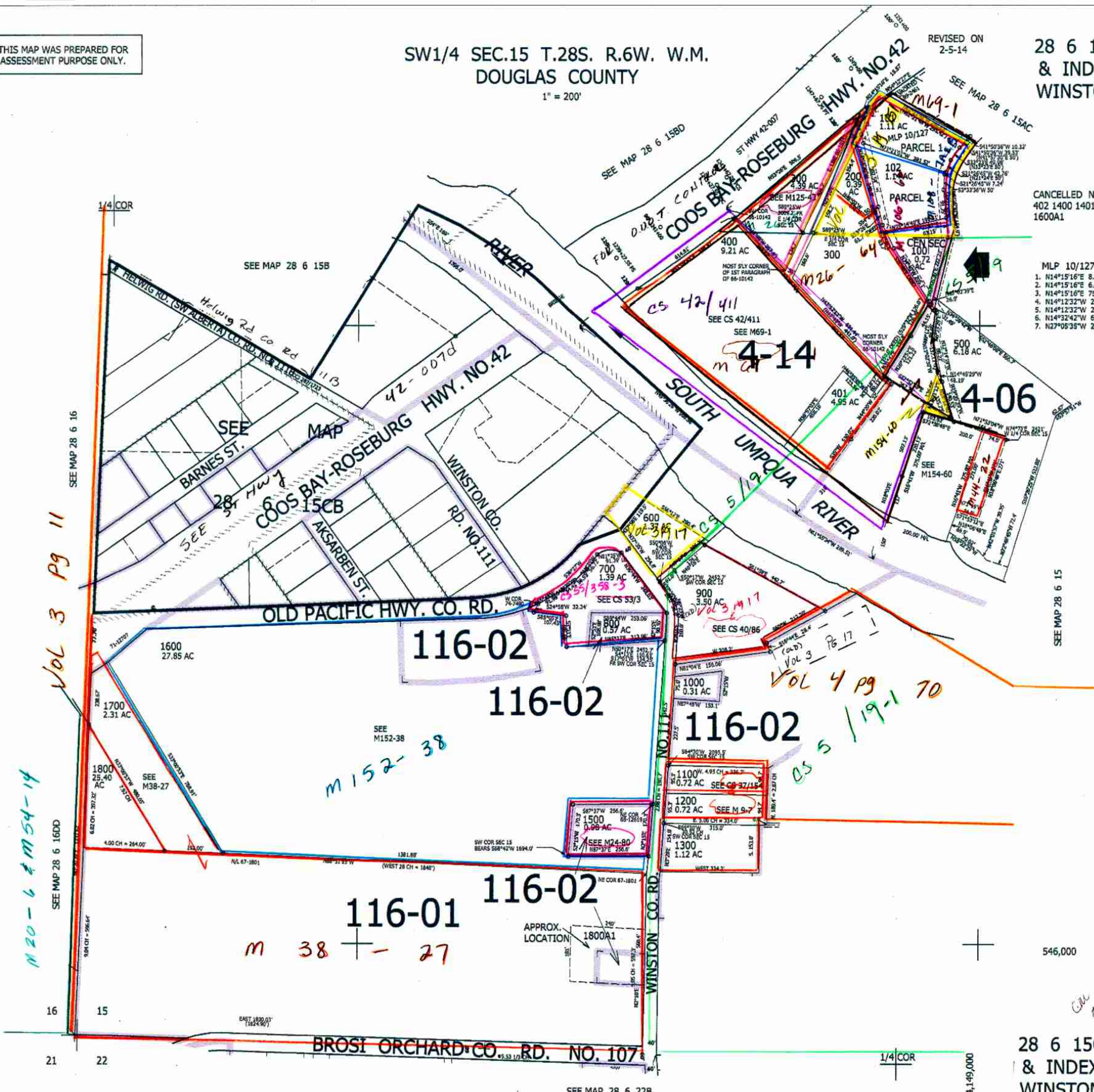
1" = 200'

REVISED ON  
2-5-14

28 6 15C  
& INDEX  
WINSTON

CANCELLED NO'S  
402 1400 1401  
1600A1

- MLP 10/127
1. N14°15'16"E 8.92'
  2. N14°15'16"E 6.65'
  3. N14°15'16"E 75.46'
  4. N14°12'32"W 29.23'
  5. N14°12'32"W 211.59'
  6. N14°32'42"W 54.84'
  7. N27°05'35"W 26.39'



*Vol 3 Pg 11*

*M 20-6 & M 54-14*

*M 152-38*

*M 38 - 27*

*Vol 4 Pg 17*

*05 5 / 19-1 70*

SEE MAP 28 6 15

SEE MAP 28 6 16

SEE MAP 28 6 16DD

SEE MAP 28 6 15BD

SEE MAP 28 6 15B

SEE MAP 28 6 22B

546,000

28 6 15C  
& INDEX  
WINSTON

*02/16/13*