

THIS MAP WAS PREPARED FOR ASSESSMENT PURPOSE ONLY

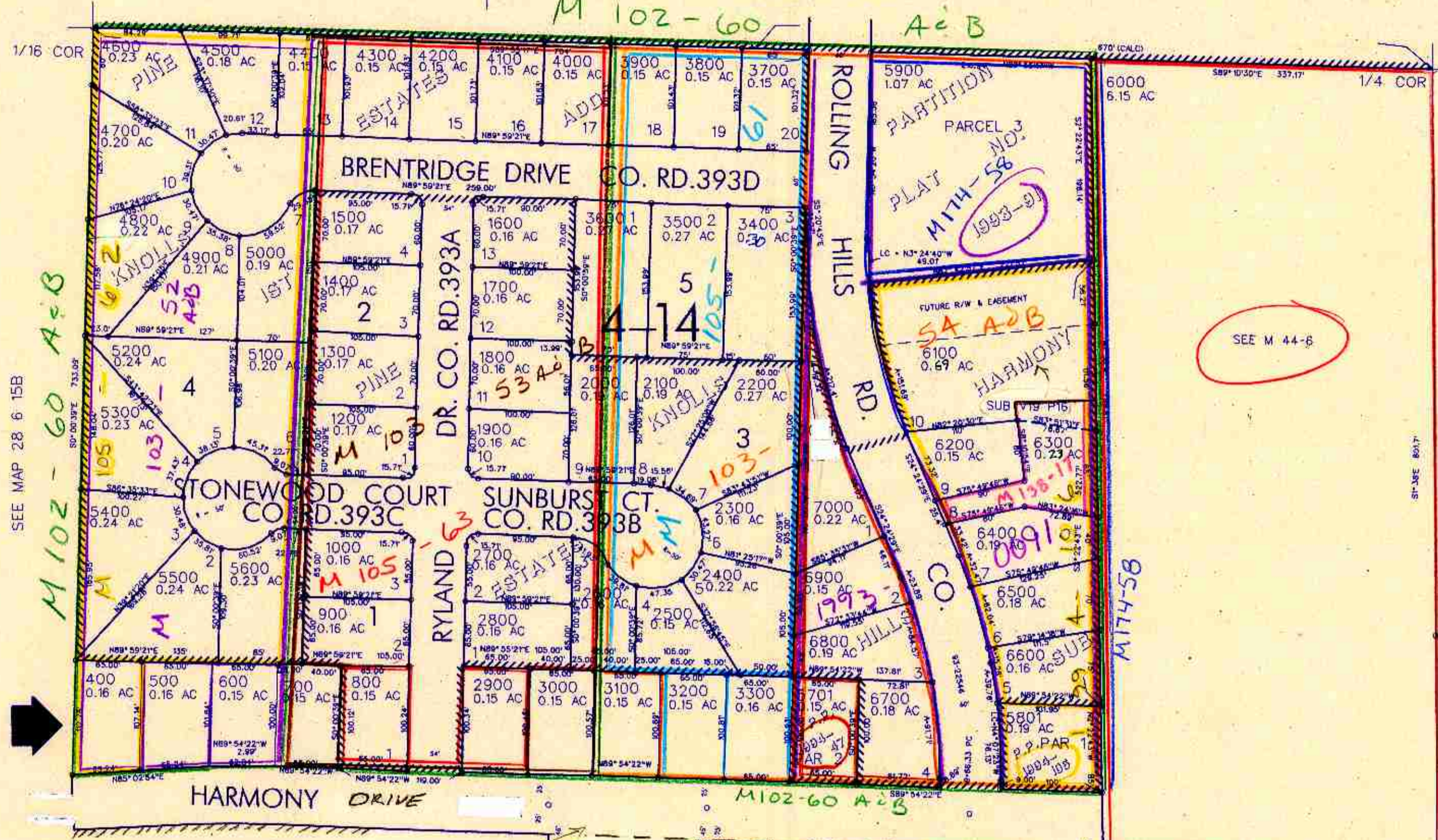
NE1/4 NW1/4 SEC. 15 T.28S. R. 6W W.M. DOUGLAS COUNTY

28 6 15BA

1"=100'

REVISED ON 10-21-99

SEE MAP 28 6 10CD



SEE MAP 28 6 15B

M 102-60 A+B

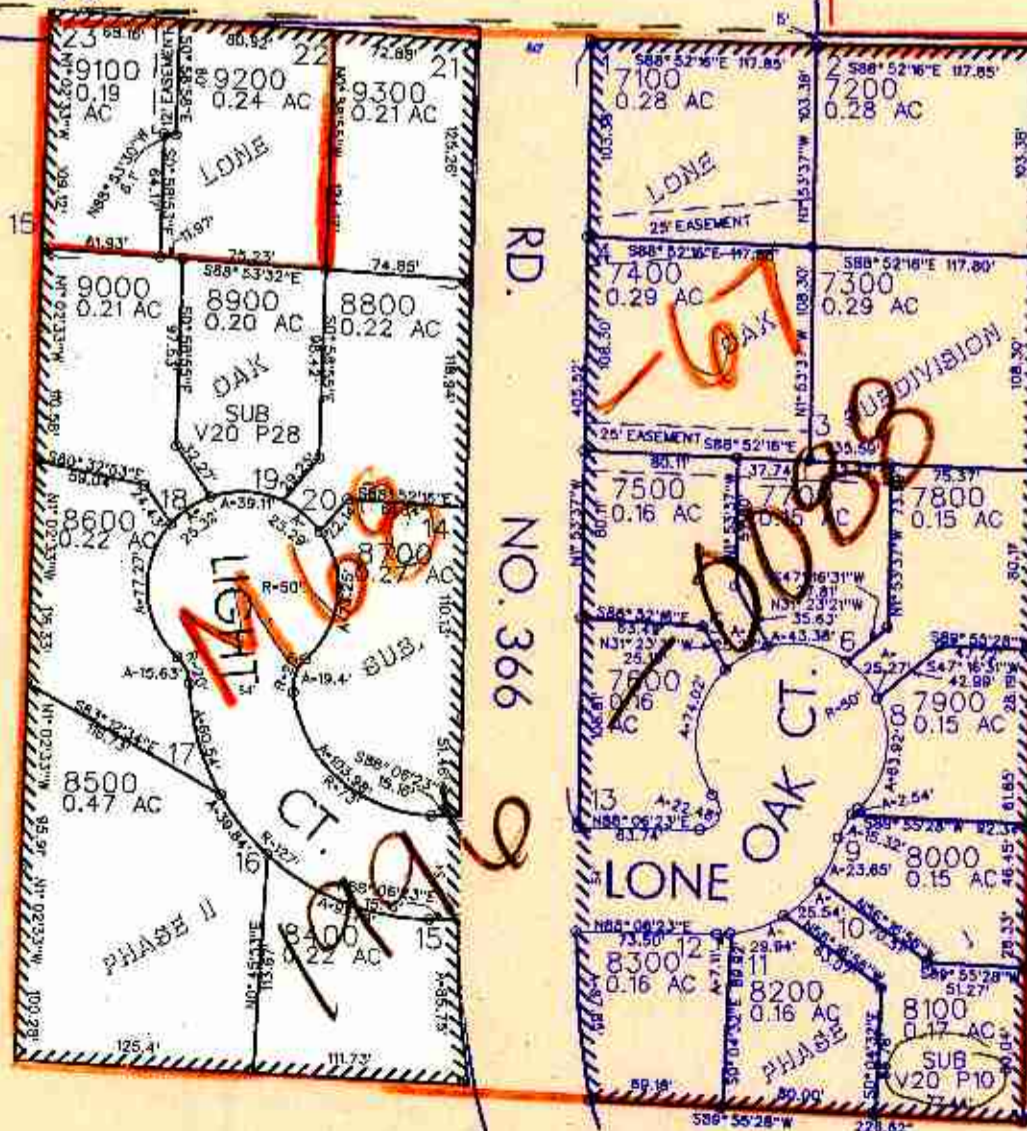


SEE M 44-B

CANCELLED NO'S  
 100 200 300  
 1100 5700 5800  
 7001

SEE MAP 28 6 15AB

For Survey info on  
 CO. RD. 377 see  
 CO. RD. 366 Plans  
 sheets 4 & 5 SEE MAP 28 6 15  
 of 7 7 1981



1/16 COR.

1/16 COR.

4,149,000

28 6 15BA

SC 11/99