

THIS MAP WAS PREPARED FOR ASSESSMENT PURPOSE ONLY

Upper Left:  
123°24'24"W 43°8'31"N  
4145697E 551142N ft

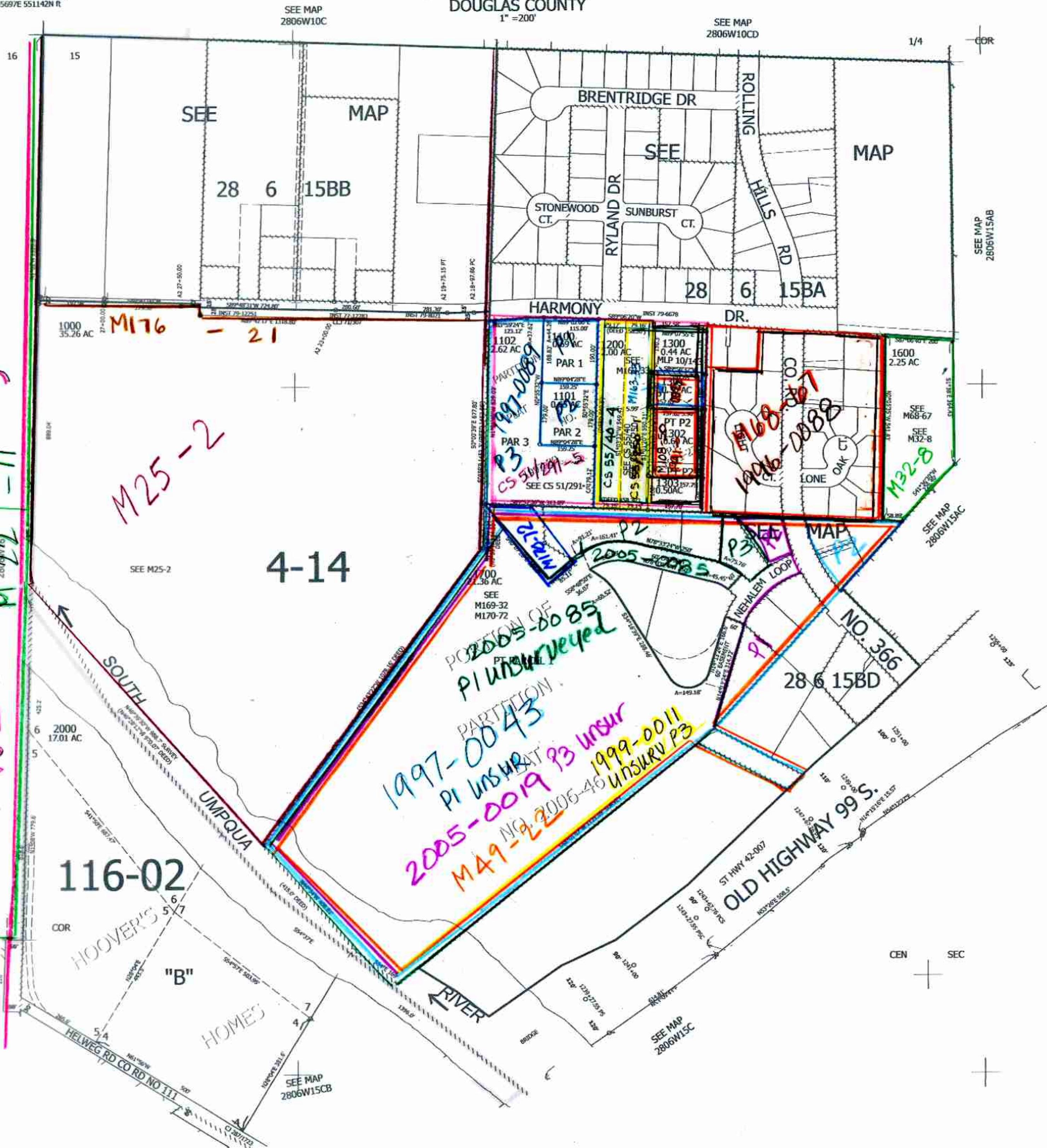
NW1/4 SEC.15 T.28S. R.06W. W.M.  
DOUGLAS COUNTY  
1" = 200'

Date Exported 2023-08-15

280615B  
& INDEX

CANCELLED NOS:  
201 202 203  
204 205 206  
207 208 209  
210 211 212  
213 100 200  
1501 1502 1503  
1400 1500 1304  
1701 THRU 1713  
1800 THRU 1806  
1900 1305 1306  
300 THRU 900

Pg 11  
VOL 3  
M 22 - 11



SEE MAP  
2806W15AB

SEE MAP  
2806W15AC

SEE MAP  
2806W10CD

SEE MAP  
2806W10C

SEE MAP  
2806W15A

SEE MAP  
2806W15C

SEE MAP  
2806W15CB

8/2023  
W.C.V.

280615B  
& INDEX

Lower Right:  
123°23'29"W 43°7'58"N  
4149622E 547665N ft