

THIS MAP WAS PREPARED FOR ASSESSMENT PURPOSE ONLY.

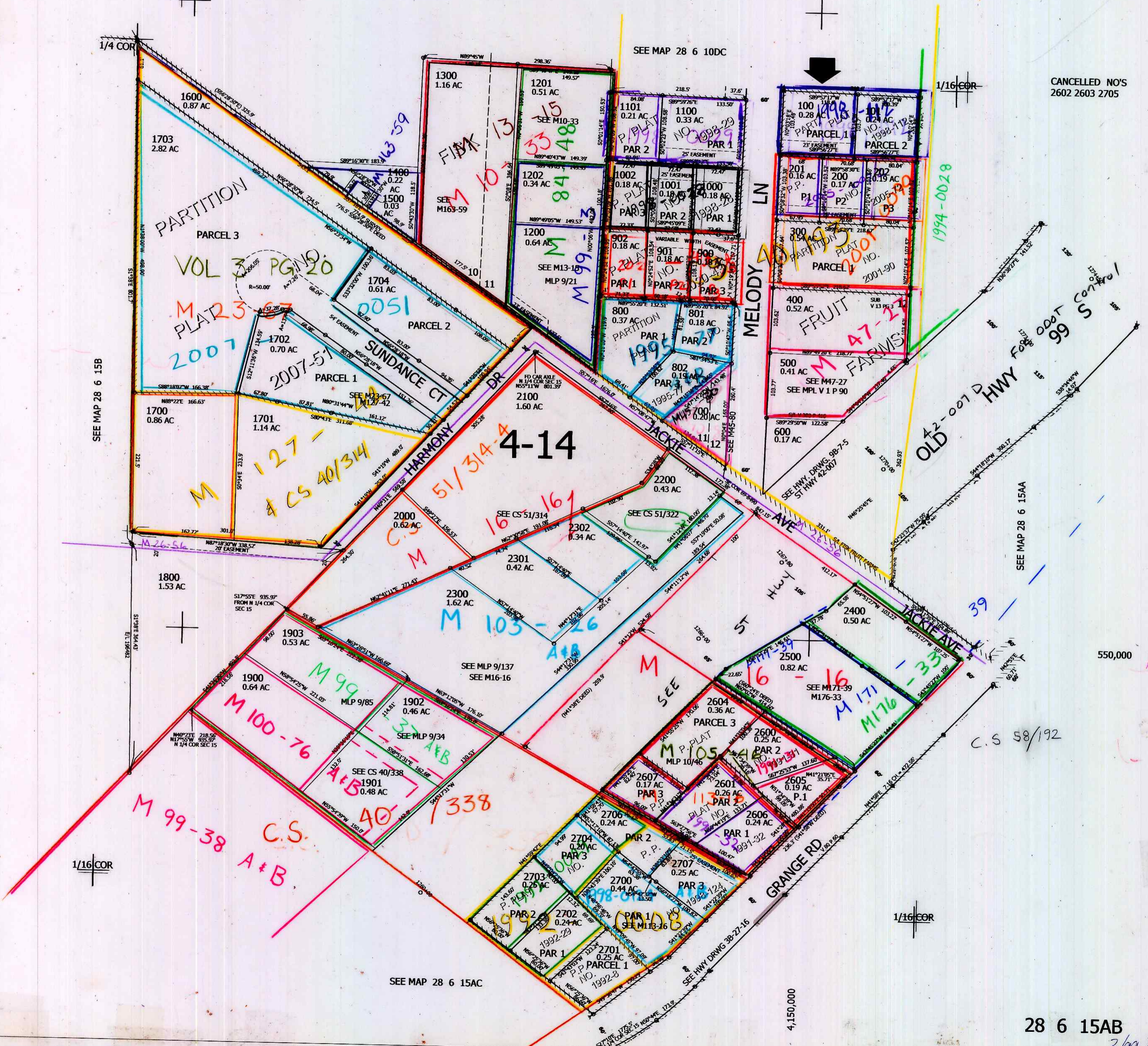
NW1/4 NE1/4 SEC.15 T.28S. R.6W. W.M.  
DOUGLAS COUNTY

1" = 100'

REVISED ON  
11-24-20

28 6 15AB

CANCELLED NO'S  
2602 2603 2705



SEE MAP 28 6 15B

SEE MAP 28 6 10DC

SEE MAP 28 6 15AA

SEE MAP 28 6 15AC

550,000

4,150,000

28 6 15AB

2/99 B.F.