

THIS MAP WAS PREPARED FOR ASSESSMENT PURPOSE ONLY.

NE1/4 NE1/4 SEC.15 T.28S. R.6W. W.M.
DOUGLAS COUNTY

REVISED ON
8-12-19

28 6 15AA

1" = 100'

SEE MAP 28 6 15AB

SEE MAP 28 6 11CC

CANCELLED NO'S
3200 301 101
100 5300 3001
400A1 500A1 502A1
2202

SEE MAP 28 6 14B

550,000

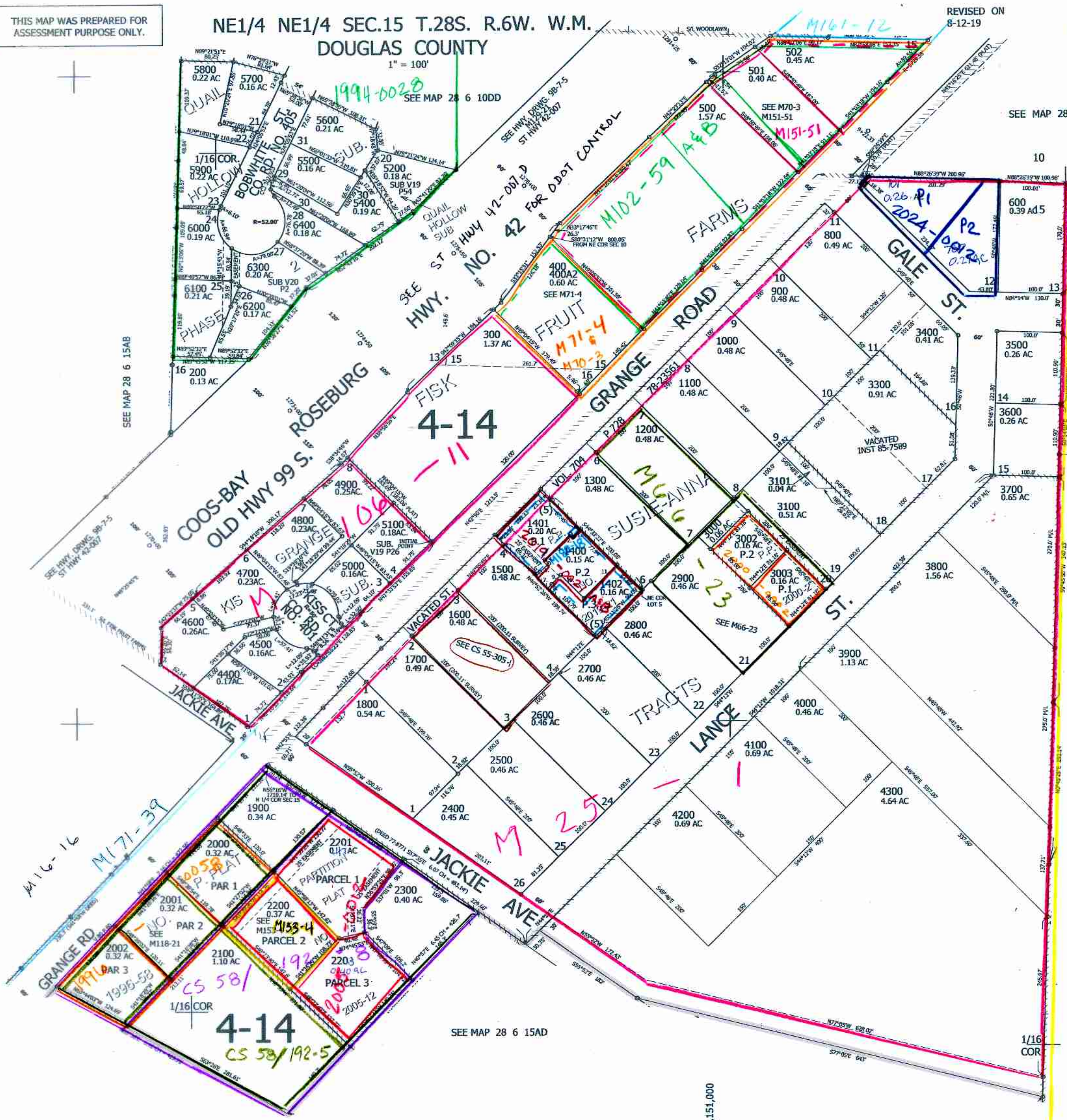
PARCEL 1400

1. S45°11'26"W 16.70'
2. N44°49'31"W 6.00'
3. S45°11'26"W 55.72'
4. S44°49'31"E 8.20'
5. S45°11'26"W 19.40'
6. S45°11'26"W 8.00'
7. S44°52'29"E 25.64'
8. N45°11'26"E 8.00'
9. N45°11'26"E 19.38'
10. S44°49'31"E 50.10'
11. N45°11'26"E 72.05'

M122-57

8-14-19 88

28 6 15AA



SEE MAP 28 6 15AD

4,151,000