

THIS MAP WAS PREPARED FOR ASSESSMENT PURPOSE ONLY.

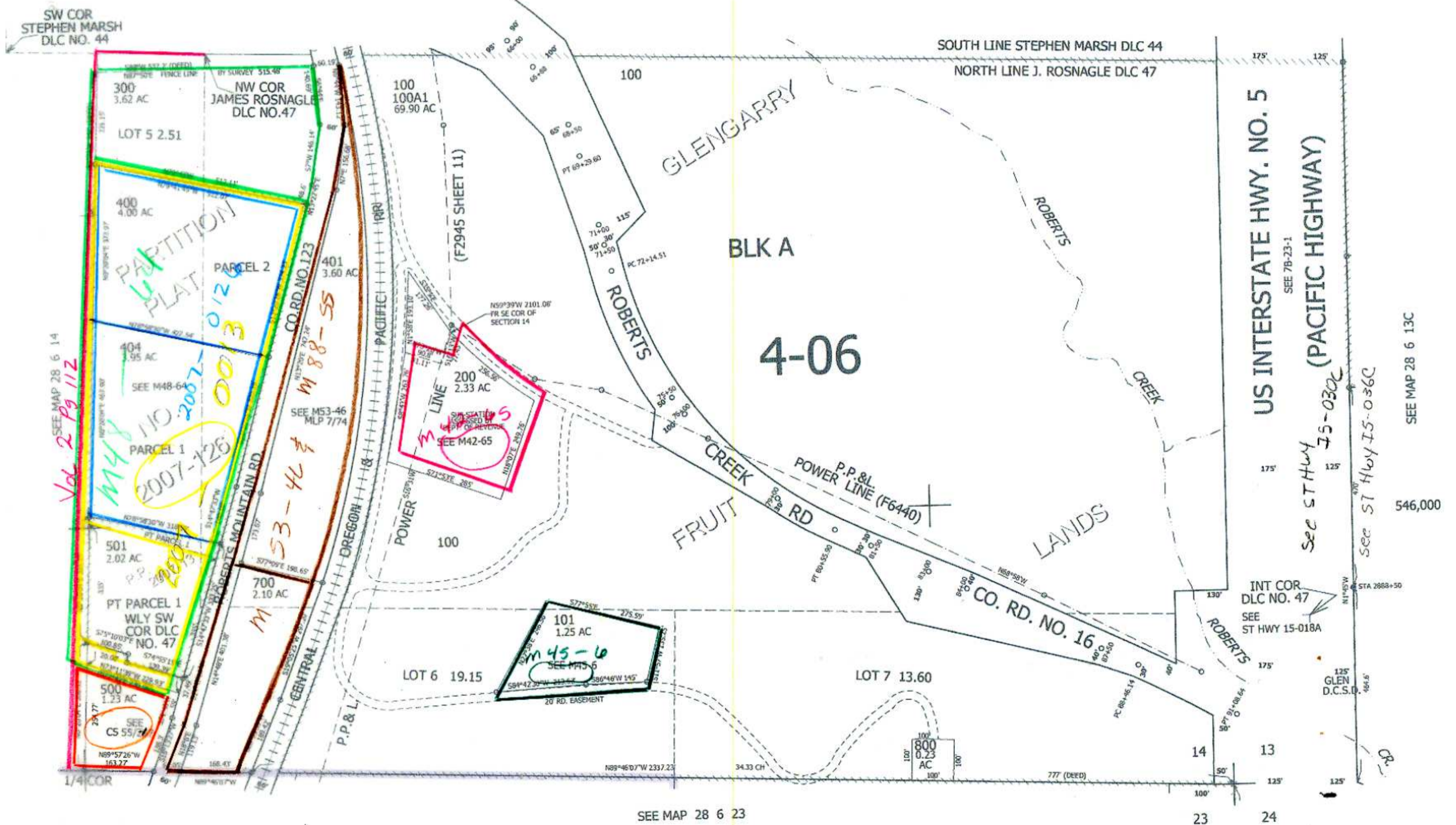
SE1/4 SEC.14 T.28S. R.6W. W.M.
DOUGLAS COUNTY

1" = 200'

REVISED ON
12-15-11

28 6 14D

CANCELLED NO'S
402 600 403



SEE MAP 28 6 14

SEE MAP 28 6 23

SEE MAP 28 6 13C

546,000

4,156,000

28 6 14D

Handwritten signature/initials