

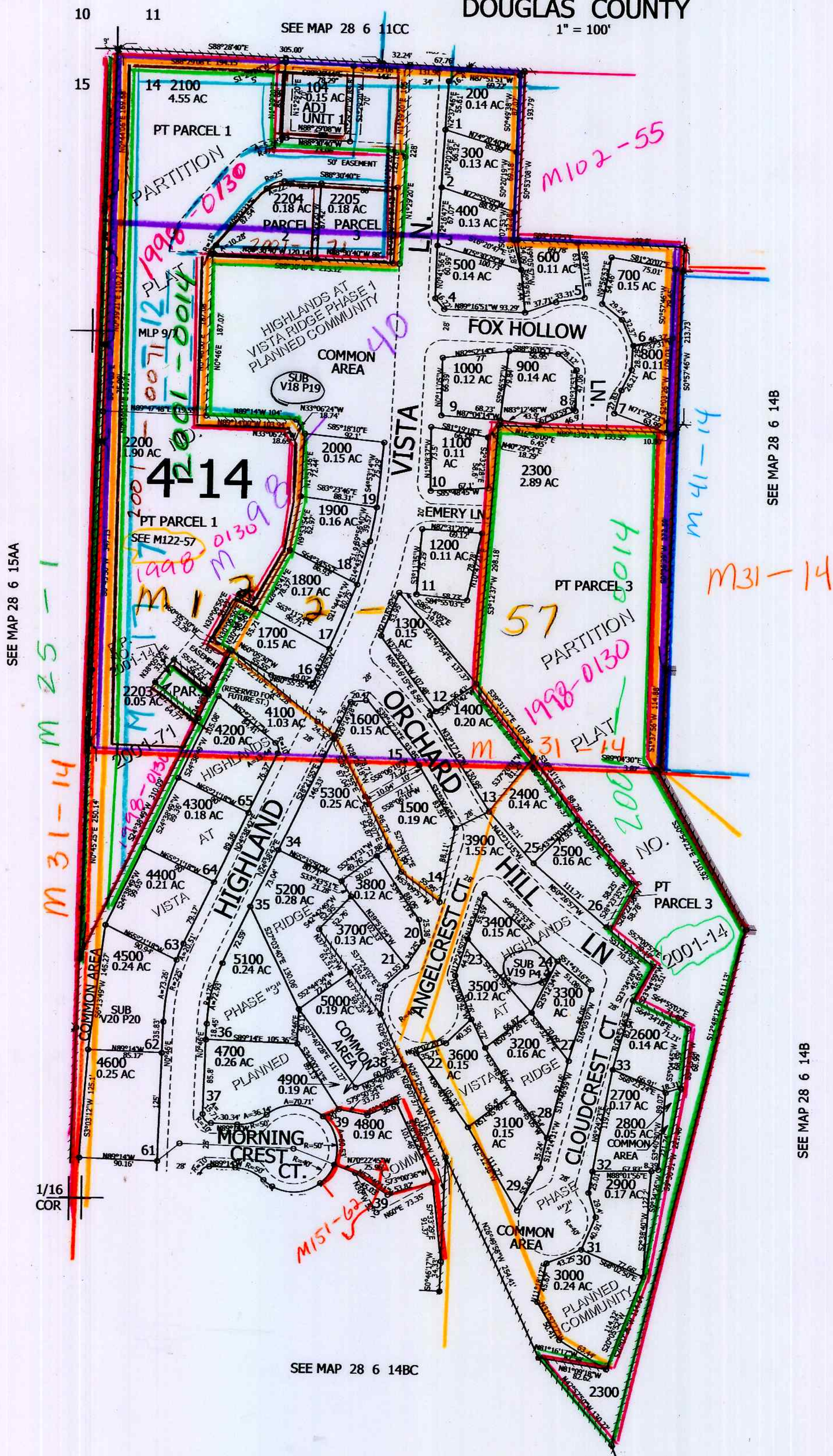
THIS MAP WAS PREPARED FOR ASSESSMENT PURPOSE ONLY.

NW1/4 NW1/4 SEC.14 T.28S. R.6W. W.M.
DOUGLAS COUNTY

REVISED ON
2-26-14

28 6 14BB

1" = 100'



CANCELLED NO'S
1501 2201 102
2202 4000 103
101 100 2301
4801 2206

549,500

em
3/10/14
JL

28 6 14BB

4,152,500