

THIS MAP WAS PREPARED FOR ASSESSMENT PURPOSE ONLY.

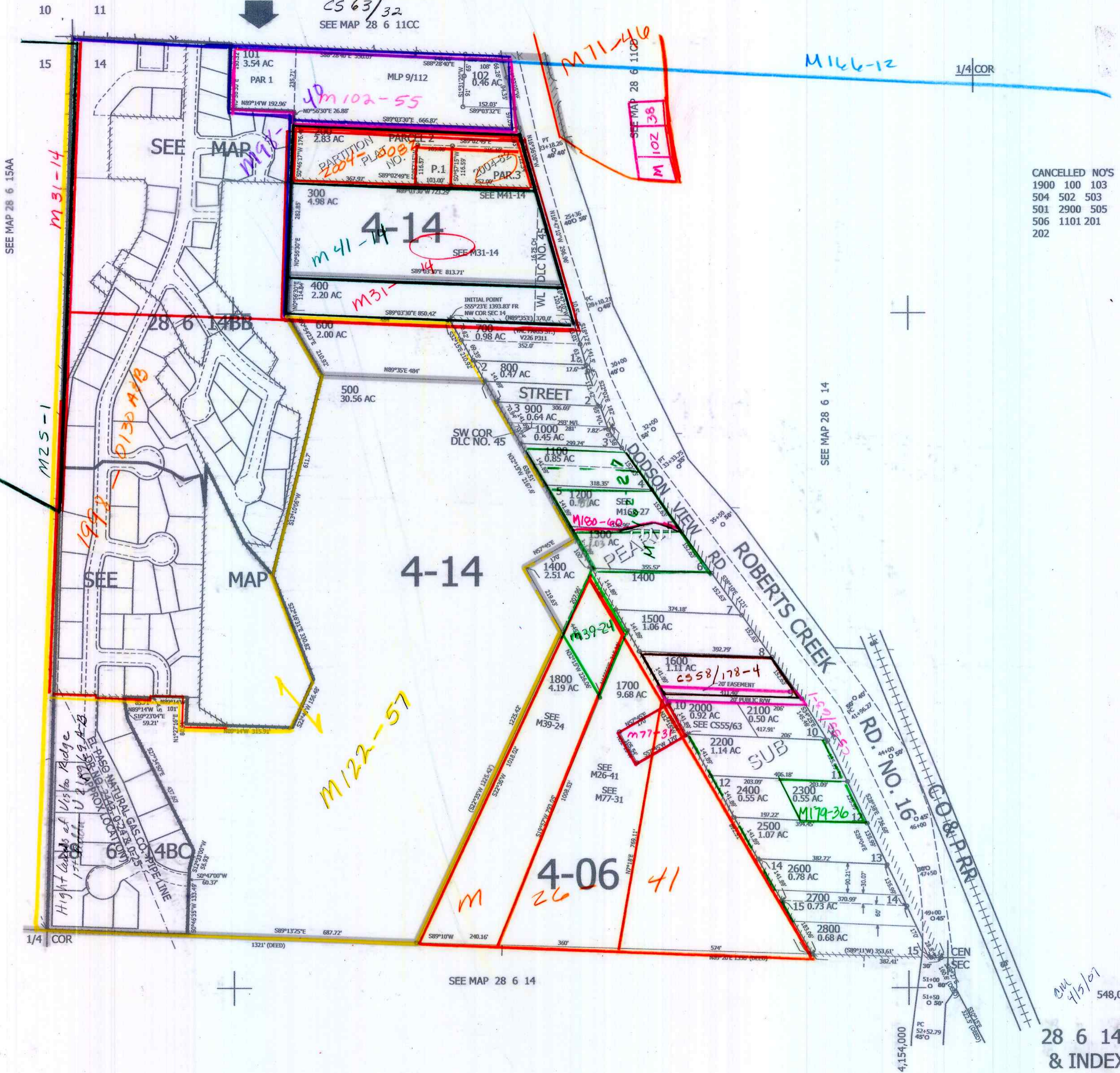
NW1/4 SEC.14 T.28S. R.6W. W.M. DOUGLAS COUNTY

1" = 200'

REVISED ON 2-22-21

28 6 14B & INDEX

m59-4  
CS 63/32  
SEE MAP 28 6 11CC



CANCELLED NO'S  
 1900 100 103  
 504 502 503  
 501 2900 505  
 506 1101 201  
 202

415/107  
 548,000

28 6 14B & INDEX