

THIS MAP WAS PREPARED FOR ASSESSMENT PURPOSE ONLY

1/16 COR

SEV4 SWV4 SEC. 11 T.28S. R.6 W W.M. DOUGLAS COUNTY

REVISED ON 10-5-00

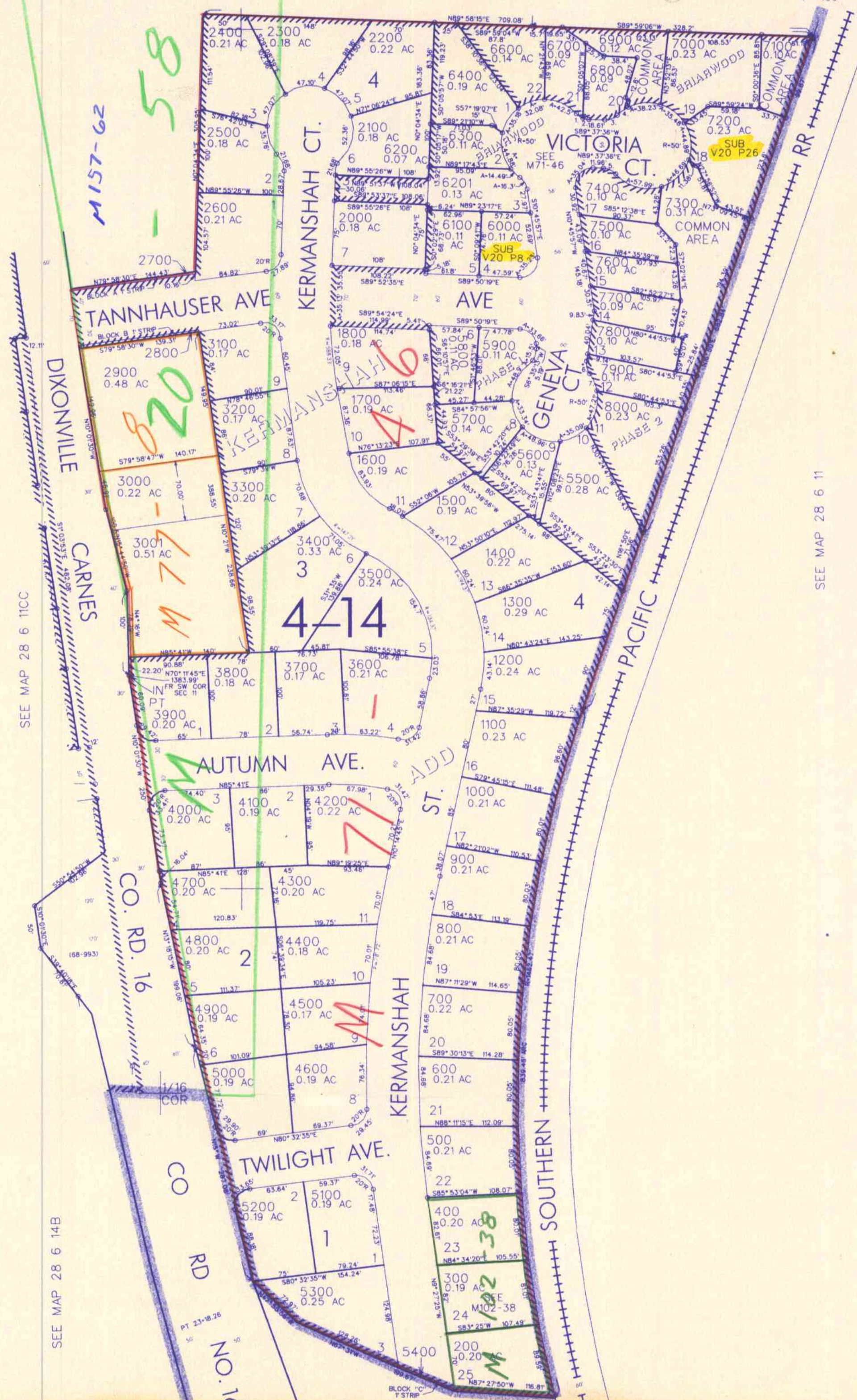
28 6 11CD

SEE MAP 28 6 11C

1"=100'

1/16 COR

CANCELLED NO'S 100 1900 6500



BRIARWOOD PHASE 2

- 1. A-B 6' R-20'
- LC-555° 58' 44" E 8.53'
- 2. A-7 7' R-20'
- LC-578° 19' 58" E 7.66'
- 3. A-15 3' R-20'
- LC-166° 16' 21" E 15.86'
- 4. A-15 32' R-50'
- LC-165° 41' 53" E 15.26'
- 5. A-16 3' R-20'
- LC-167° 01' 10" W 15.86'
- 6. A-15 3' R-20'
- LC-515° 37' 15" E 15.12'
- 7. A-21 09' R-50'
- LC-525° 44' 59" E 20.94'

SEE MAP 28 6 11CC

SEE MAP 28 6 14B

SEE MAP 28 6 14

SEE MAP 28 6 11

551,000

4,154,000

28 6 11CD

11/00 JP NW