

THIS MAP WAS PREPARED FOR ASSESSMENT PURPOSE ONLY.

Upper Left:  
123°23'15"W 43°8'59"N  
4150887E 553775N ft

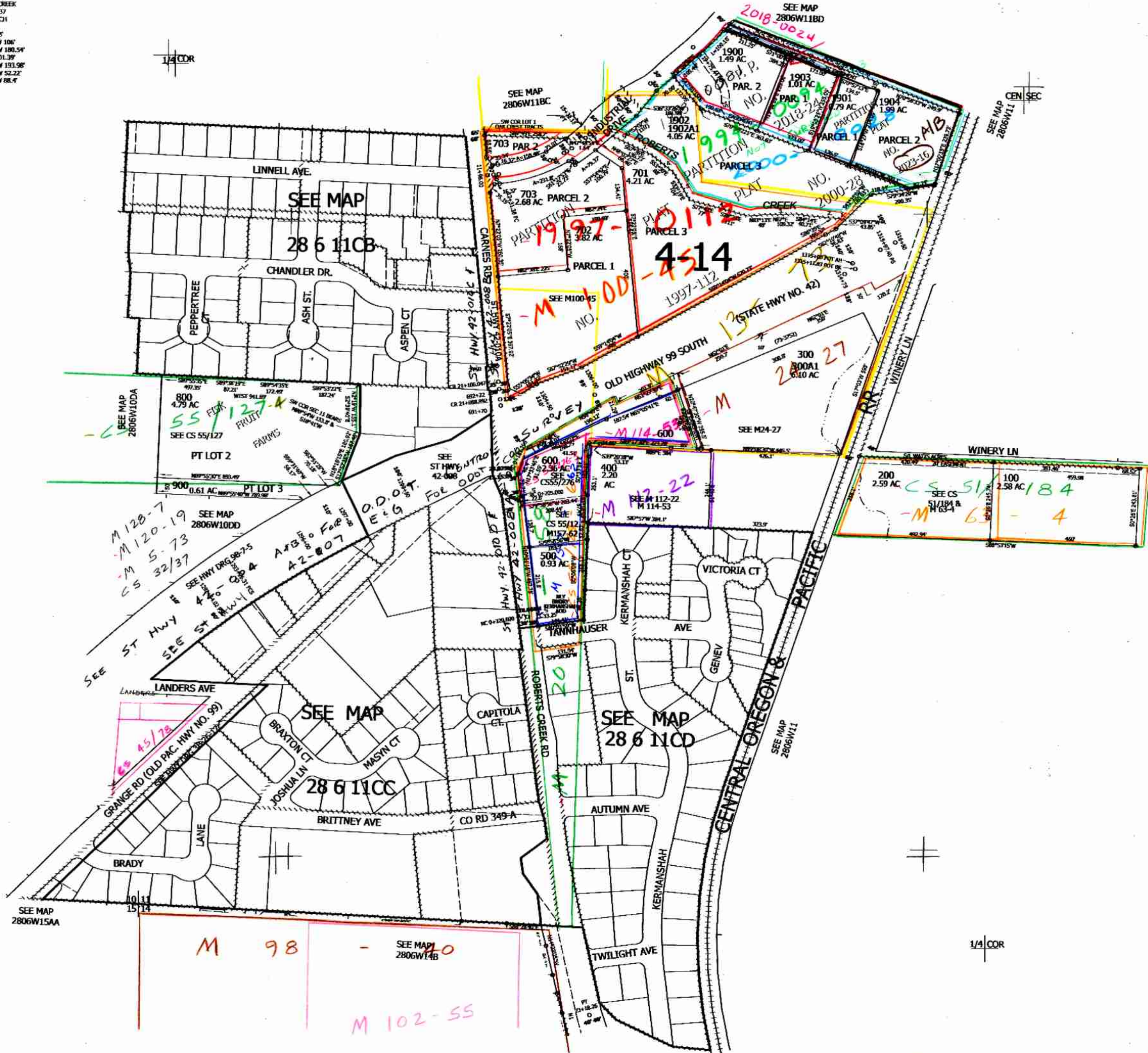
SW1/4 SEC.11 T.28S. R.06W. W.M.  
DOUGLAS COUNTY  
1" = 204'

Date Exported 2023-06-14

2806111  
& INDEX

- PP 2000-28
- CL ROBERTS CREEK
- PER PP 1998-137
- (DOESNT MATCH)
- PP 1997-112
- 1. S79°W 38.48'
- 2. S87°13'49"W 106'
- 3. N89°39'32"W 180.54'
- 4. N82°55'W 201.39'
- 5. N38°03'04"W 193.98'
- 6. N53°40'27"W 52.22'
- 7. N65°45'32"W 88.4'

- CANCELLED NO.
- 1500 1304 17
- 1801 1301 7
- 1101 1300 10
- 1302 1100 13
- 1102 1400 4
- 1600 1700 17
- 1703 1800 10
- 1002 1001 12
- 1201 1202 6
- 501 1901



SEE MAP 2806W111  
CEN SEC

SEE MAP 2806W11

1/4 COR

M 98 - SEE MAP 2806W14B

M 102-55

280611C  
& INDEX

Lower Right:  
123°22'20"W 43°8'25"N  
4154892E 550225N ft