

NW1/4 NW1/4 SEC. 11 T.28S. R.6W. W.M.
DOUGLAS COUNTY

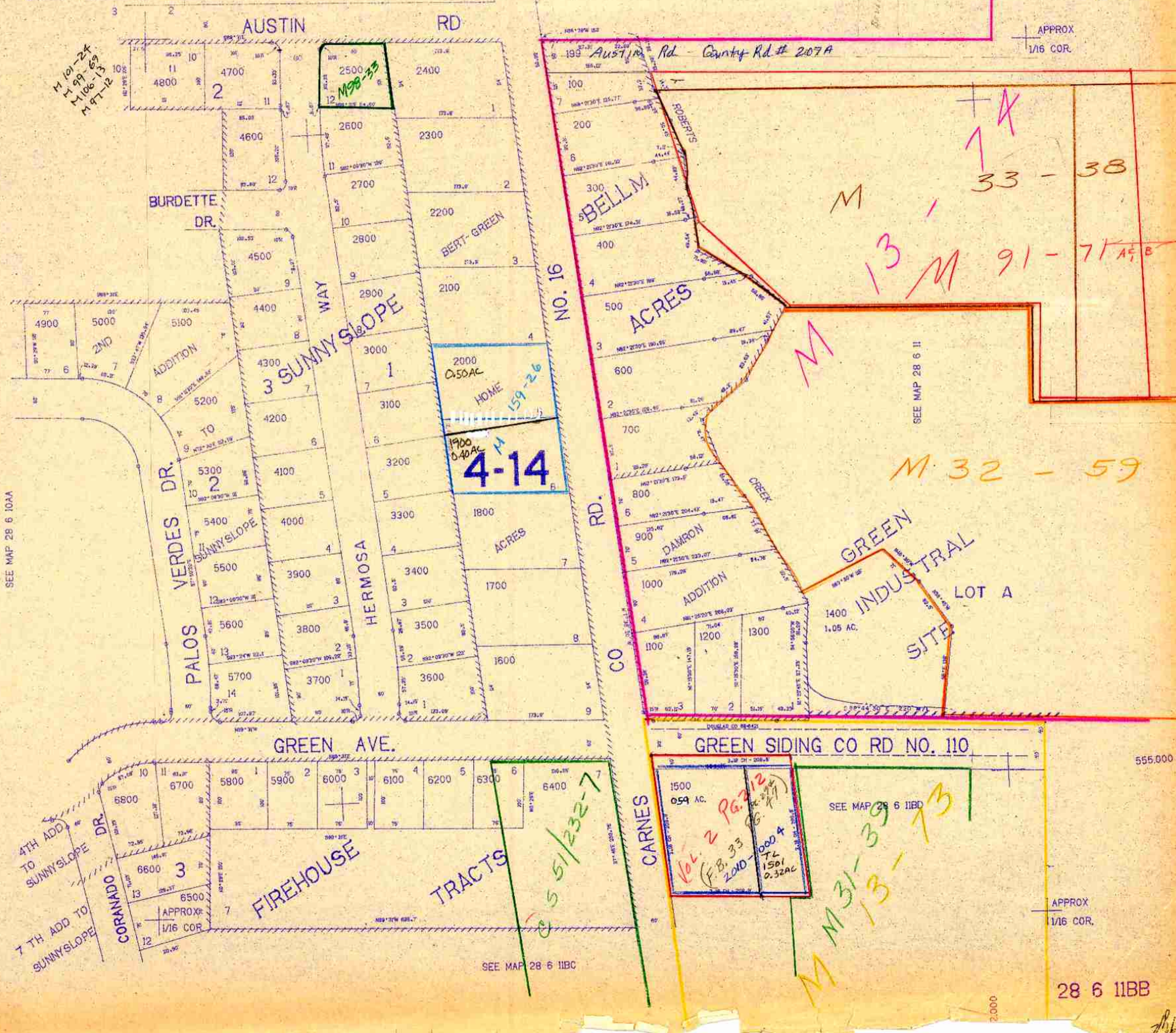
28 6 11BB

THIS MAP WAS PREPARED FOR
ASSESSMENT PURPOSE ONLY.

SEE MAP 28 6 2CC

APPROX
1/16 COR.

Cancelled
#199



UNRECORDED

SEE MAP 28 6 10AA

SEE MAP 28 6 11

SEE MAP 28 6 11BC

APPROX
1/16 COR.

28 6 11BB

2,000