

NW1/4 SEC.11 T.28S. R.6W. W.M.  
DOUGLAS COUNTY

28 6 11B  
& INDEX

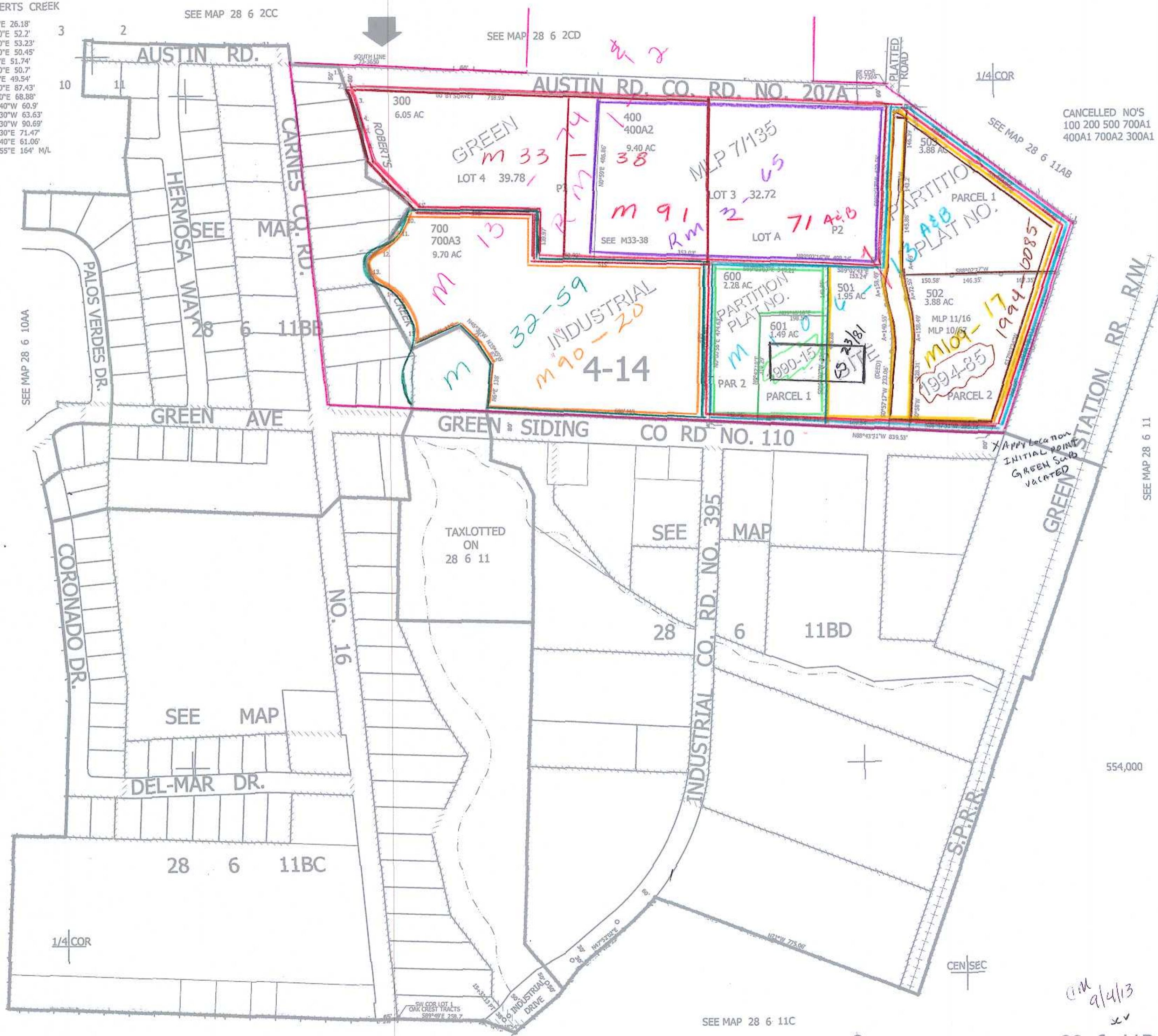
REVISED ON  
6-4-15

1" = 200'

THIS MAP WAS PREPARED FOR  
ASSESSMENT PURPOSE ONLY.

C/L ROBERTS CREEK

1. S9°56'30"E 26.18'
2. S16°42'00"E 52.2'
3. S28°00'30"E 53.23'
4. S19°41'30"E 50.45'
5. S5°32'40"E 51.74'
6. S14°51'30"E 50.7'
7. S2°18'50"E 49.54'
8. S63°00'30"E 87.43'
9. S50°18'00"E 68.88'
10. S29°30'40"W 60.9'
11. S30°11'30"W 63.63'
12. S48°30'30"W 90.69'
13. S23°08'30"E 71.47'
14. S31°53'40"E 61.06'
15. S29°51'55"E 164' M/L



CANCELLED NO'S  
100 200 500 700A1  
400A1 700A2 300A1

1/4 COR

SEE MAP 28 6 11AB

SEE MAP 28 6 11

554,000

Apply Location  
INITIAL POINT  
GREEN Siding  
VACATED

am  
9/4/13  
xv

28 6 11B  
& INDEX

SEE MAP 28 6 10AD

SEE MAP 28 6 11CB

SEE MAP 28 6 11C

4,154,000