

THIS MAP WAS PREPARED FOR ASSESSMENT PURPOSE ONLY.

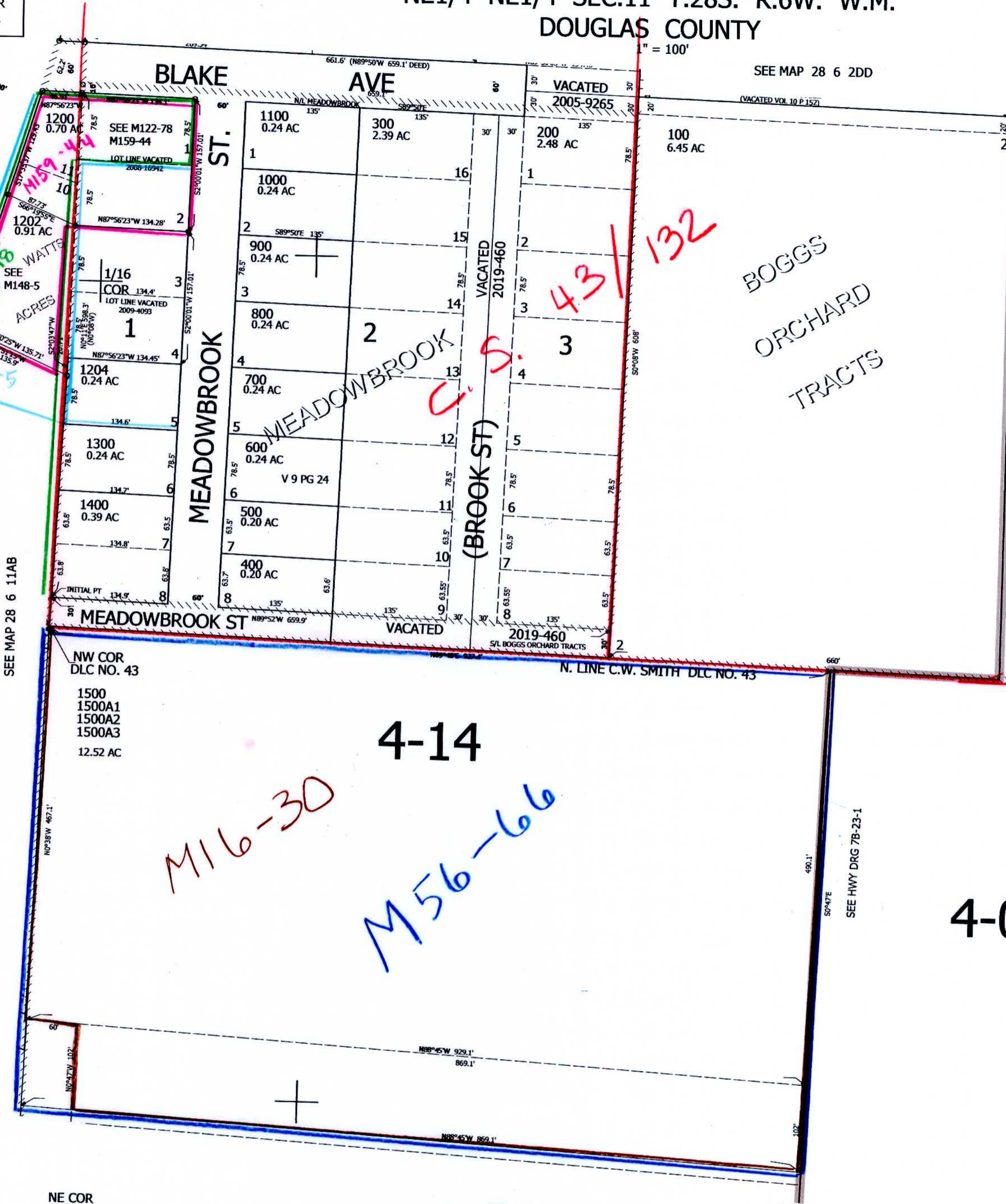
NE1/4 NE1/4 SEC.11 T.28S. R.6W. W.M. DOUGLAS COUNTY

REVISED ON 1-17-19

28 6 11AA

SEE HWY DRG 48-26-6
10B-4-5
CORD NO 400
OLD HWY 99 SO.

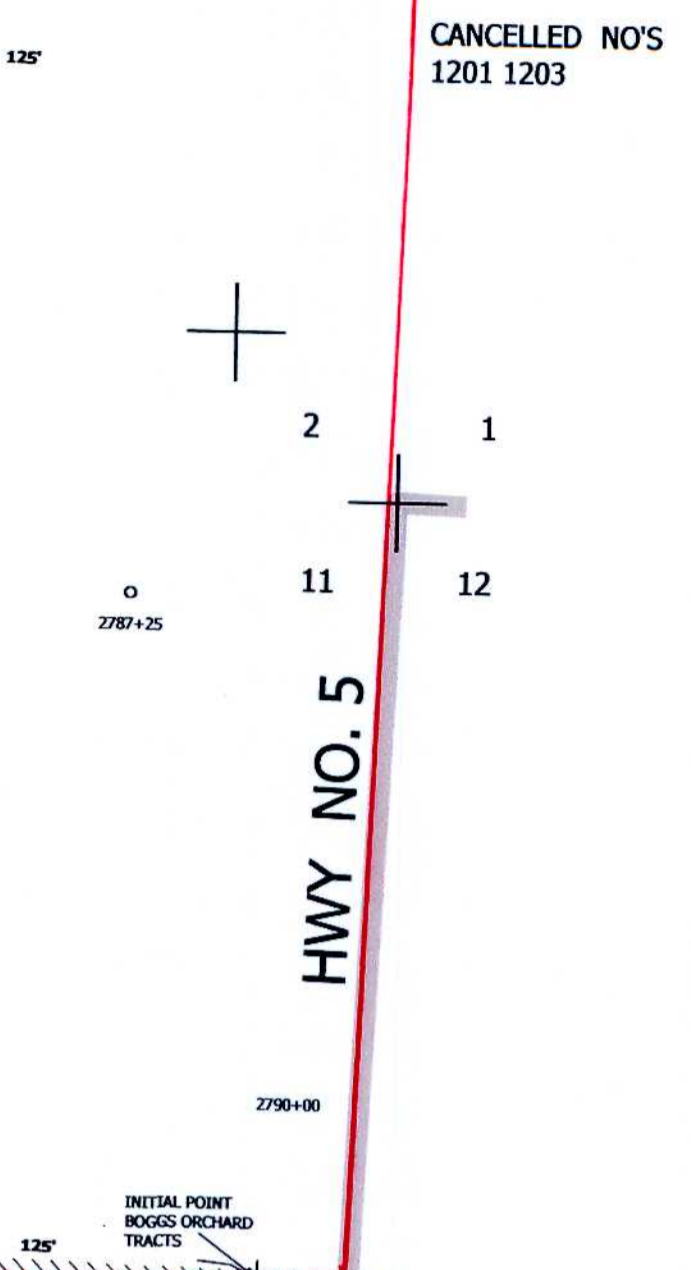
SEE MAP 28 6 11AB



NE COR
WARREN R.
FOSTER
DLC NO. 45

SEE MAP 28 6 11A

1/16 COR



CANCELLED NO'S
1201 1203

HWY NO. 5

SEE MAP 28 6 12

M16-30

M56-66

43/132

C.S.

1500
1500A1
1500A2
1500A3
12.52 AC

4-14

4-06

ST HWY I-5-031
E, F, H, I, J, T

US INTERSTATE

555,000

4,156,000

1/16 COR

28 6 11AA

1-28-19 81
scr