

THIS MAP WAS PREPARED FOR ASSESSMENT PURPOSE ONLY.

SE1/4 SEC.10 T.28S. R.6W. W.M. DOUGLAS COUNTY

28 6 10D & INDEX

REVISED ON 11/2/04

1" = 200'

CANCELLED NO'S 200 300 104

SEE MAP 28 6 10AC

SEE MAP 28 6 10AD

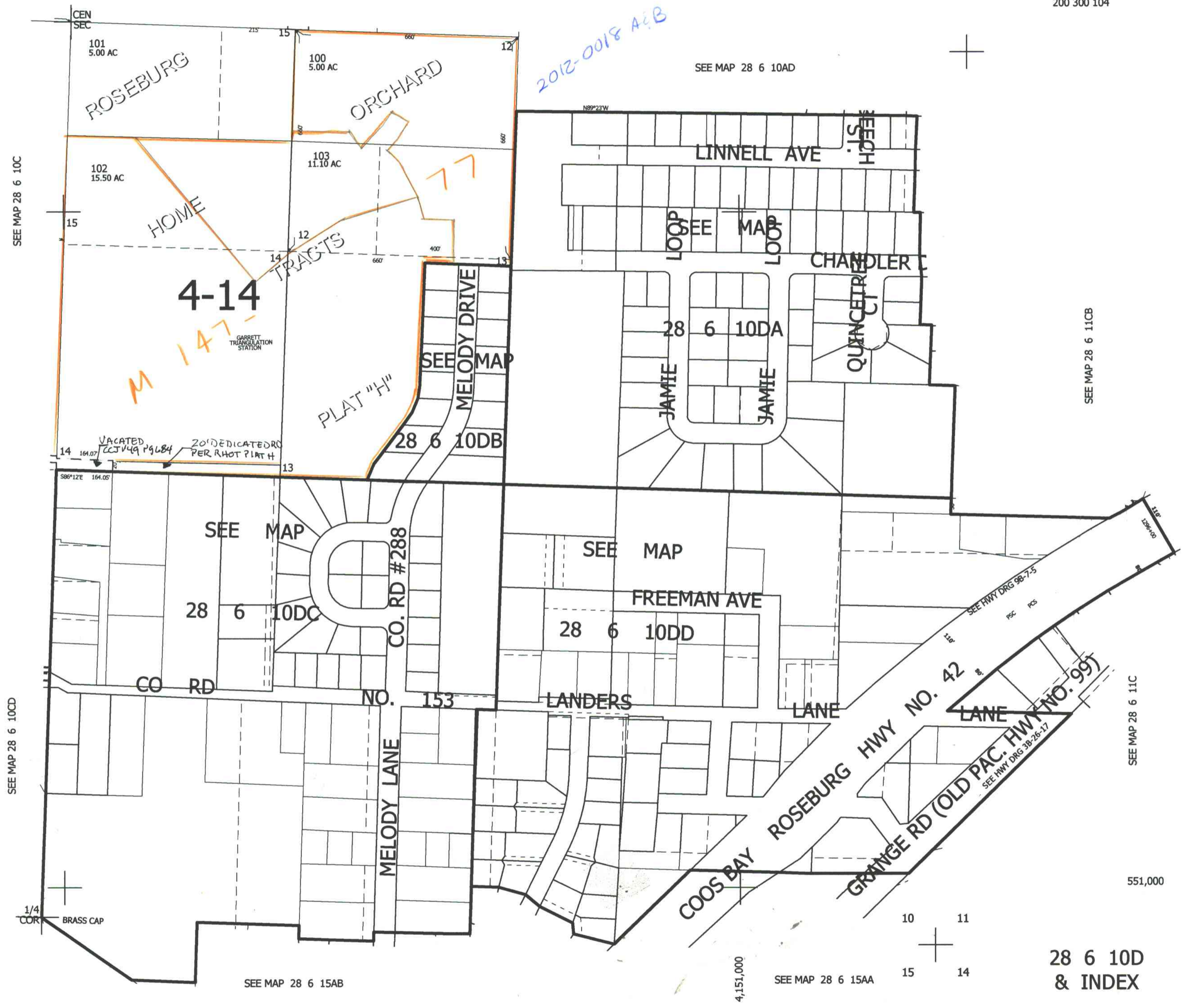
SEE MAP 28 6 11CB

SEE MAP 28 6 11C

551,000

SEE MAP 28 6 15AA

28 6 10D & INDEX



SEE MAP 28 6 10C

SEE MAP 28 6 10CD

SEE MAP 28 6 15AB

4,151,000