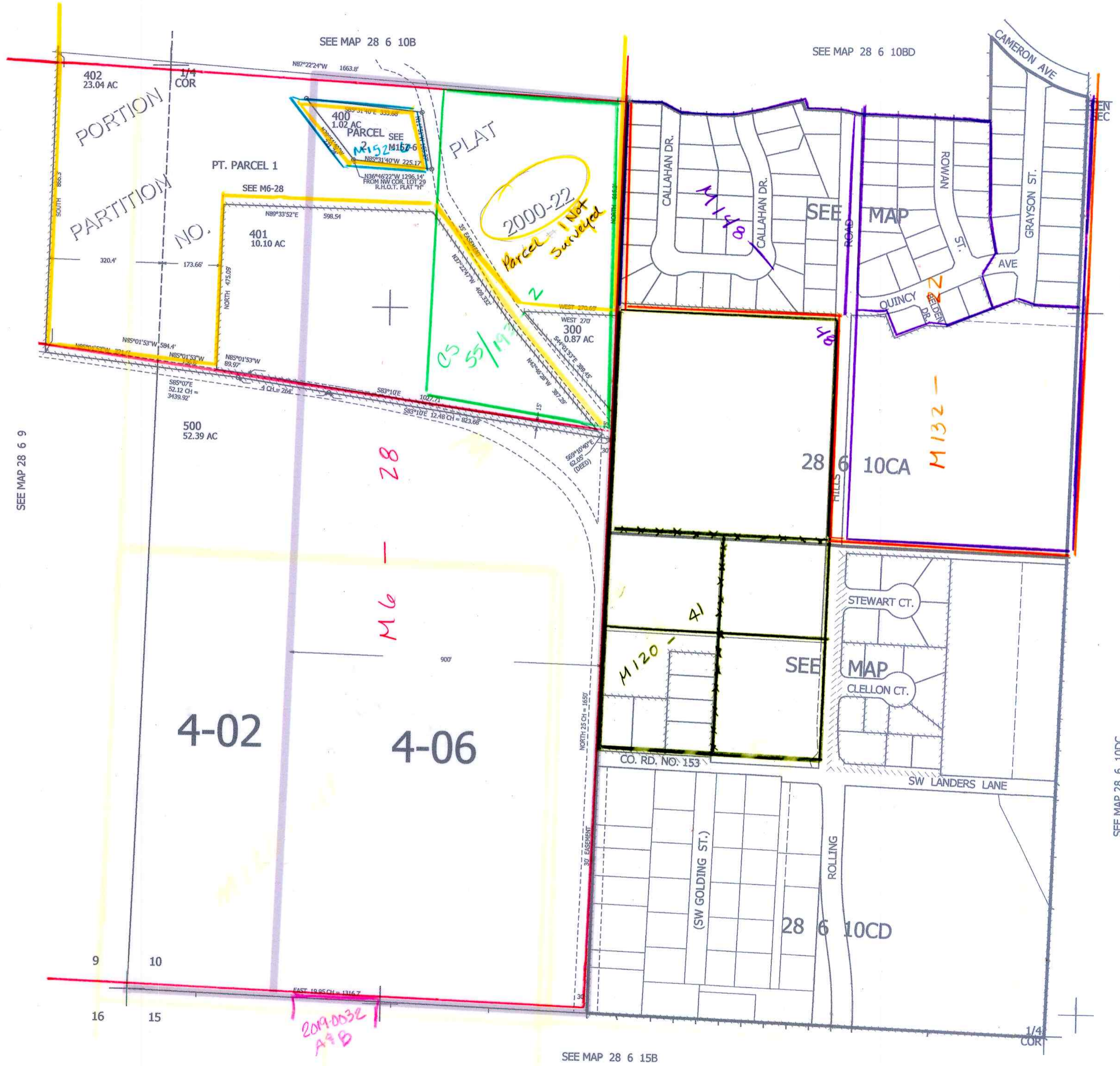


THIS MAP WAS PREPARED FOR ASSESSMENT PURPOSE ONLY.

SW1/4 SEC.10 T.28S. R.6W. W.M.
DOUGLAS COUNTY
1" = 200'

REVISED ON
12-5-11

28 6 10C
& INDEX



CANCELLED NO'S
202 102 100
200 201 101

SEE MAP 28 6 9

SEE MAP 28 6 10D

SEE MAP 28 6 10DC

SEE MAP 28 6 15B

551,000

AW
7/6/10
JCV

4,149,000
28 6 10C
& INDEX

9 10
16 15

4-02

4-06

28 6 10CA

SEE MAP

28 6 10CD

2019-0032
A9B

2000-22
Parcel 1 Not
Surveyed

05/55/1973

M6 - 28

M120 - 41

M140

M132 -