

THIS MAP WAS PREPARED FOR ASSESSMENT PURPOSE ONLY.

SE1/4 NE1/4 SEC.10 T.28S. R.6W. W.M. DOUGLAS COUNTY 1" = 100'

REVISED ON 4-2-18

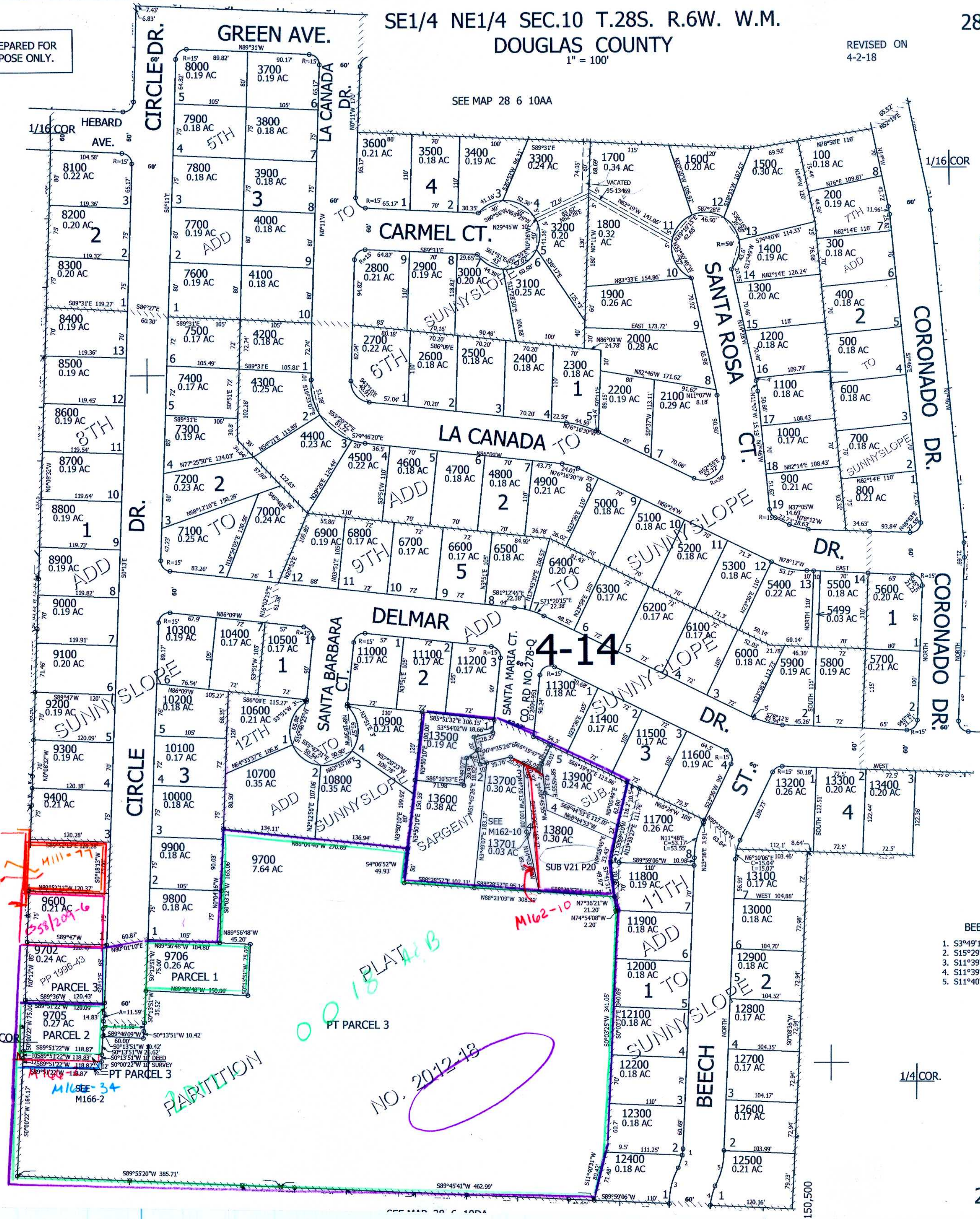
28 6 10AD

SEE MAP 28 6 10AA

SEE MAP 28 6 10AC

SEE MAP 28 6 11BC

CANCELLED NO'S
9500 3299 1799
9704 9703 9701
13801 13802 9707
9708



- 1. S3°49'17"W C=9.33' L=9.34'
- 2. S15°29'39"W C=19.12' L=19.18'
- 3. S11°39'55"W C=52.64' L=53'
- 4. S11°39'55"W C=28.34' L=28.54'
- 5. S11°40'45"W C=52.6' L=52.97'

553,500

28 6 10AD