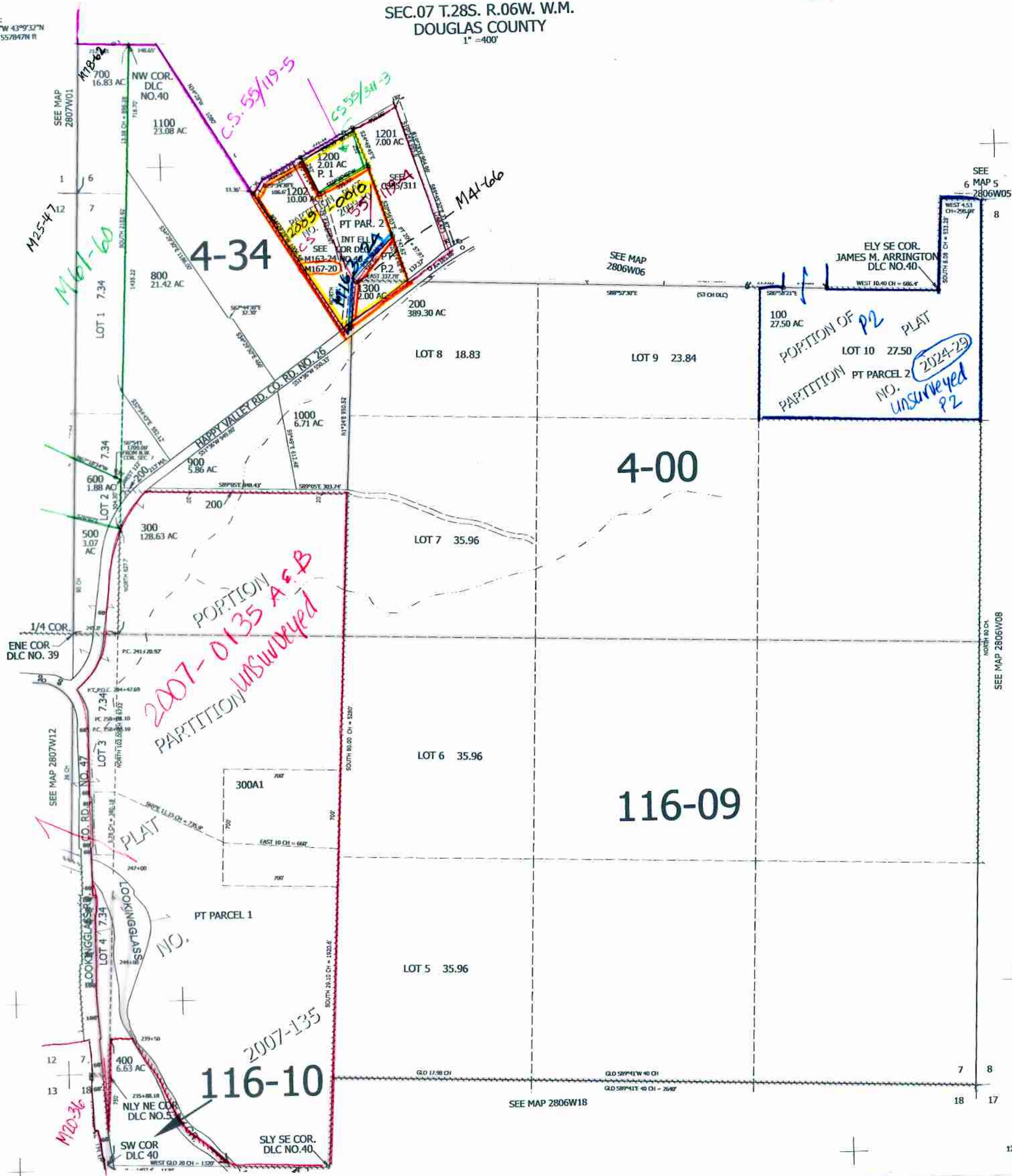


THIS MAP WAS PREPARED FOR ASSESSMENT PURPOSE ONLY.

Upper Left:
123°28'12"W 43°9'32"N
4129027E 557847N ft

SEC.07 T.28S. R.06W. W.M.
DOUGLAS COUNTY
1" = 400'

CANCELLED NOS:
100M1 401 1203



SEE MAP 2806W08

SEE MAP 2806W18

Lower Right:
123°26'23"W 43°8'26"N
4136876E 550891N ft

11/2024-98
JCL

280607