

THIS MAP WAS PREPARED FOR ASSESSMENT PURPOSE ONLY.

SEC.5 T.28S. R.6W. W.M. DOUGLAS COUNTY

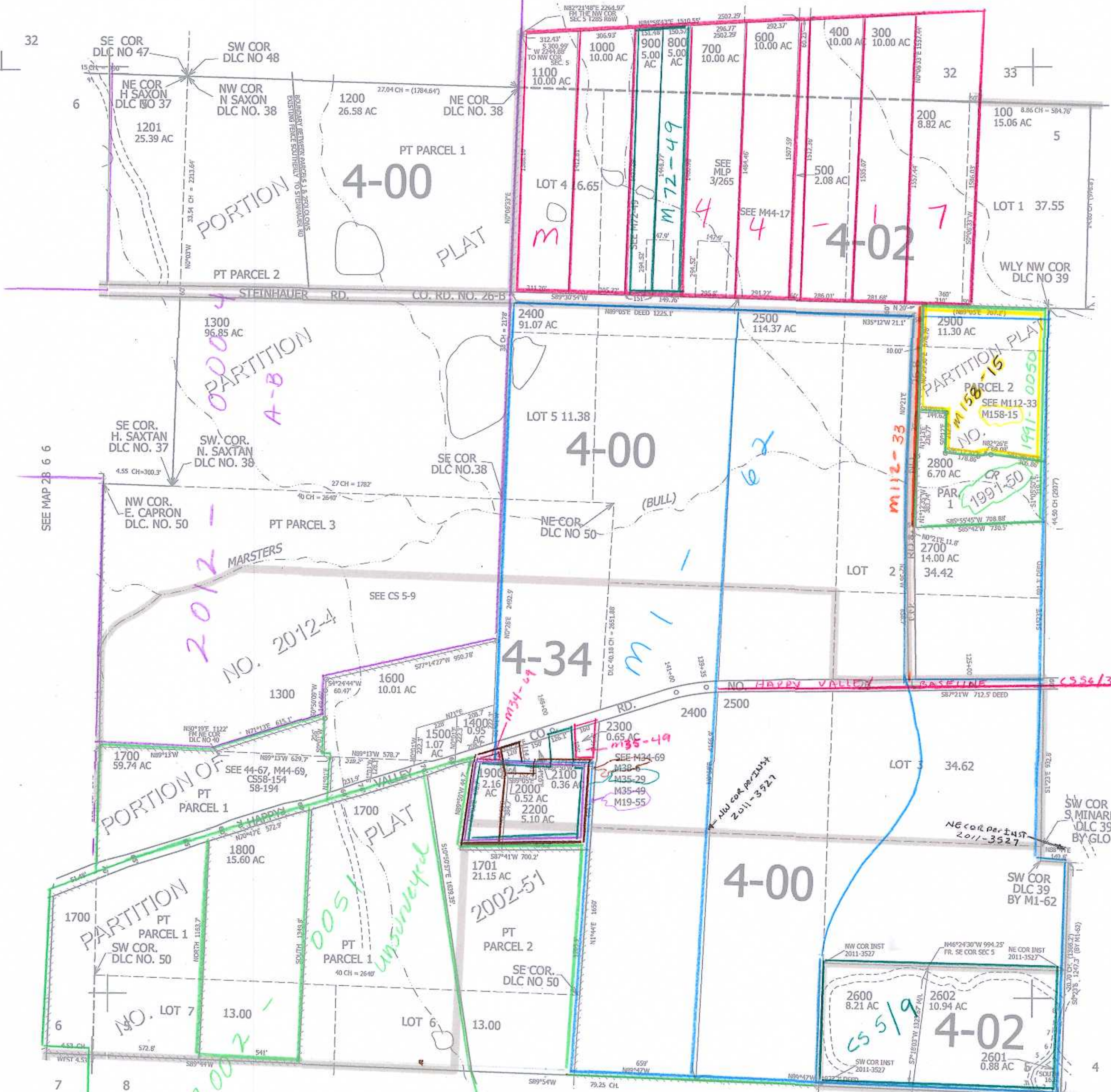
REVISED ON 1-21-16

28 6 5

1" = 400'

SEE MAP 27 6 32

31 32



CANCELLED NO'S 3000 2901 2801 1301

SEE MAP 28 6 6

SEE MAP 28 6 4

- PARCEL 2601
1. N81°00'W 97.5'
 2. N60°00'W 55'
 3. N20°00'W 60'
 4. N16°00'E 55'
 5. N51°00'E 100'
 6. N35°00'E 50'
 7. N4°00'E 150'
 8. N18°00'E 105'

557,000

am 4/12/12 JCV

28 6 5

SEE MAP 28 6 8

4,141,000