

THIS MAP WAS PREPARED FOR
ASSESSMENT PURPOSE ONLY.

NE1/4 NW1/4 SEC.3 T.28S. R.6W. W.M.
DOUGLAS COUNTY

28 6 3BA

1"=400'

SEE MAP 27 6 34

APPROX. 1/16 COR.

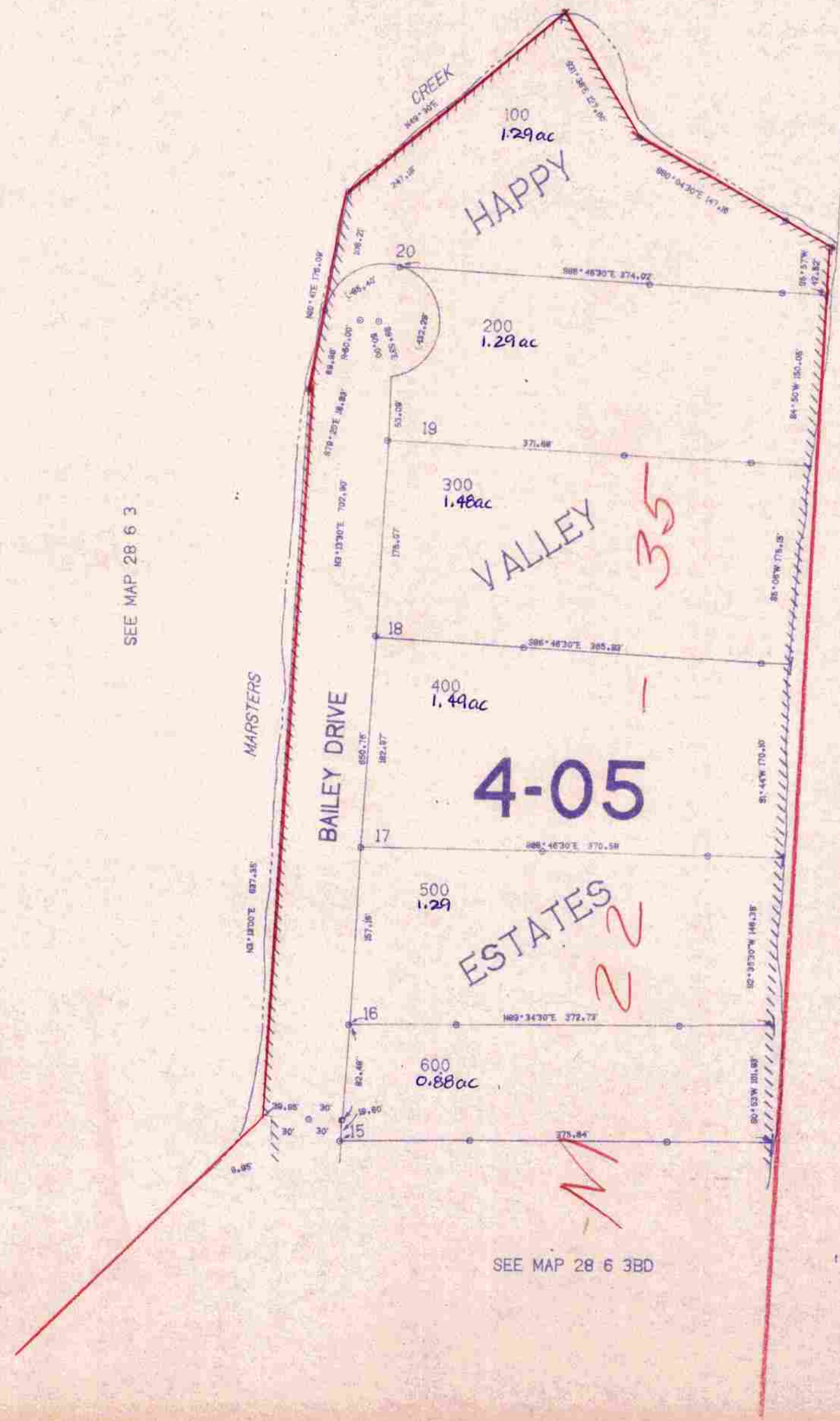
APPROX. 1/4 COR.

SEE MAP 28 6 3

1227.000
561.000

SEE MAP 28 6 3

SEE MAP 28 6 3A



SEE MAP 28 6 3BD

APPROX. 1/16 COR.

APPROX. 1/16 COR.

28 6 3BA

CONTROL LAYOUT TRACED CHECKED

2/10/21