

THIS MAP WAS PREPARED FOR ASSESSMENT PURPOSE ONLY.

SE1/4 SE1/4 SEC.2 T.28S. R.6W. W.M. DOUGLAS COUNTY 1" = 100'

REVISED ON 2-12-04

28 6 2DD

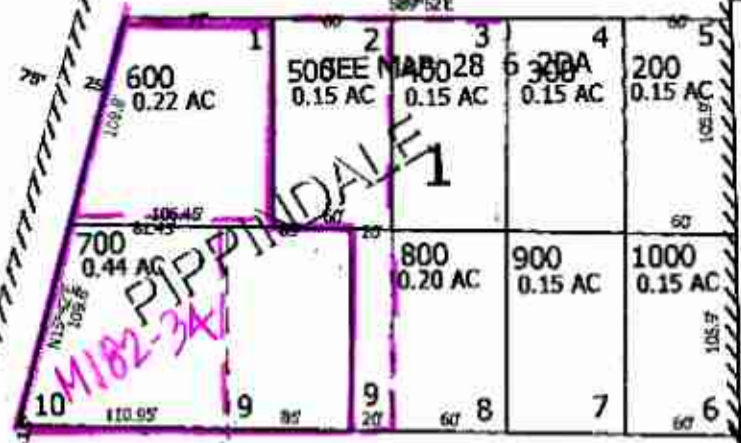
1/16 COR

SEE MAP 28 6 2DC

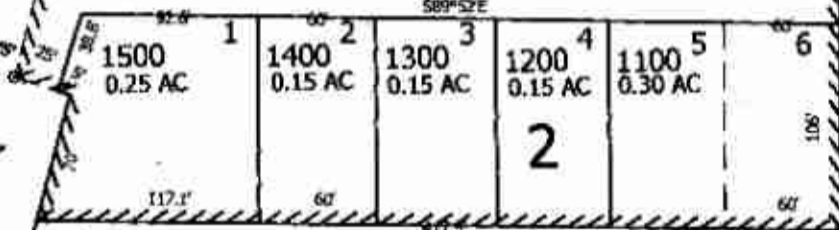
WYATT'S COUNTRY PLANTATION

1/16 COR

BOGGS ORCHARD (SPEEDWAY RD) CO RD 274



SE PIPPEN AVE.



C.S. 43/132 FOR FOUND POINTS

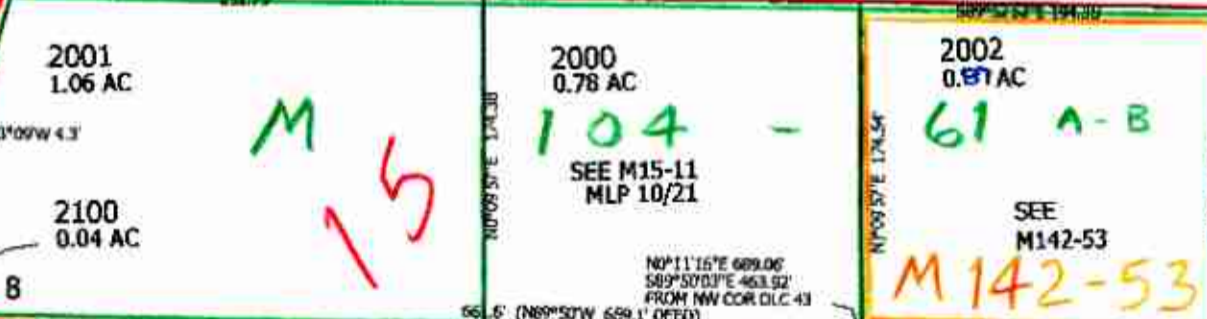
4-14

STATE HWY NO. 99

SWLY LI OF DIV 339 (NO. 347007)

M 126 - 15  
M 82-21

M 120-6  
SEE M120-6



M 15  
104 - 61 A-B  
SEE M15-11 MLP 10/21  
SEE M142-53

S.W. BLAKE (LINCOLN) AVE

SEE MAP 28 6 11AA

BOGGS ORCHARD

TRACTS

ST HWY I-5-031 A, B, D, J, K ST HWY I-5-027 E-I US INTERSTATE HWY NO. 5

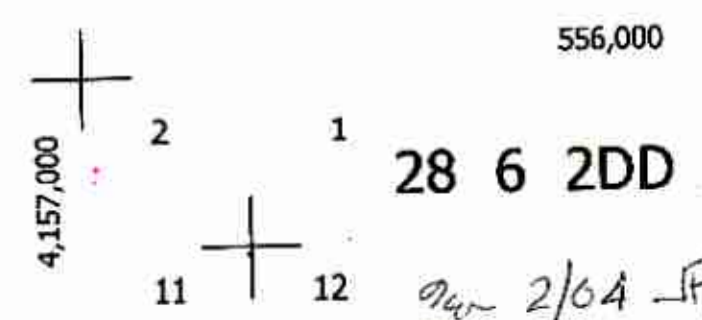
ST HWY 42-011 A-D

CANCELLED NO'S 1701

1/16 CO

M 100-42

SEE MAP 28 6 1C



556,000

28 6 2DD

Mar 2/04 JP