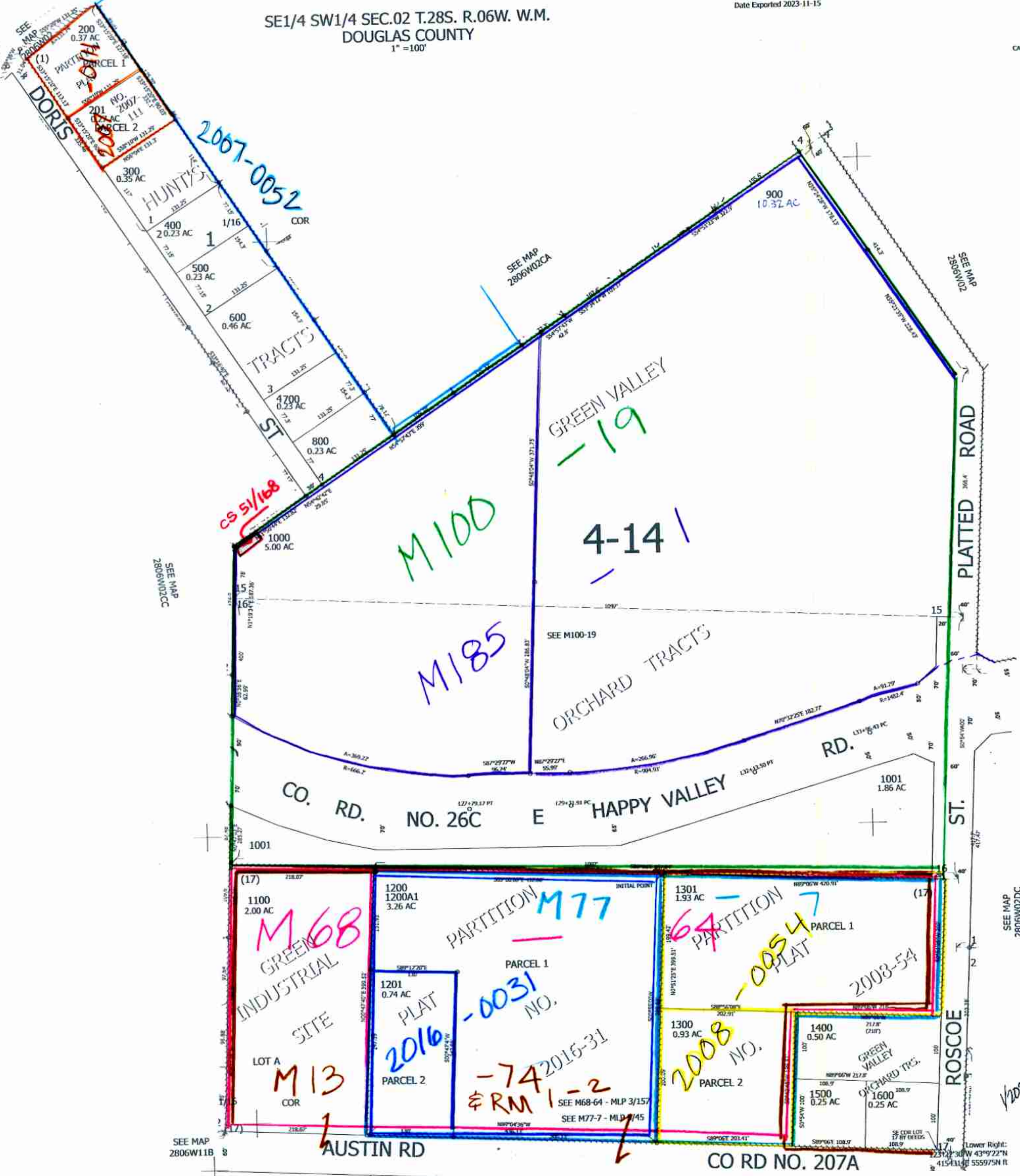


THIS MAP WAS PREPARED FOR ASSESSMENT PURPOSE ONLY.

Upper Left:
123°22'57"W 43°9'39"N
4152352E 557754N ft
SEE MAP 2806W02CB

SE1/4 SW1/4 SEC.02 T.28S. R.06W. W.M.
DOUGLAS COUNTY
1" = 100'

CANCELLED NOS:
100 101 102
901 1002



SEE MAP 2806W02CC

SEE MAP 2806W02CA

SEE MAP 2806W02

SEE MAP 2806W02DC

SEE MAP 2806W11B

2024 B
JCV

Lower Right:
231°30'30"W 43°9'22"N
415411E 555975N ft